

76865

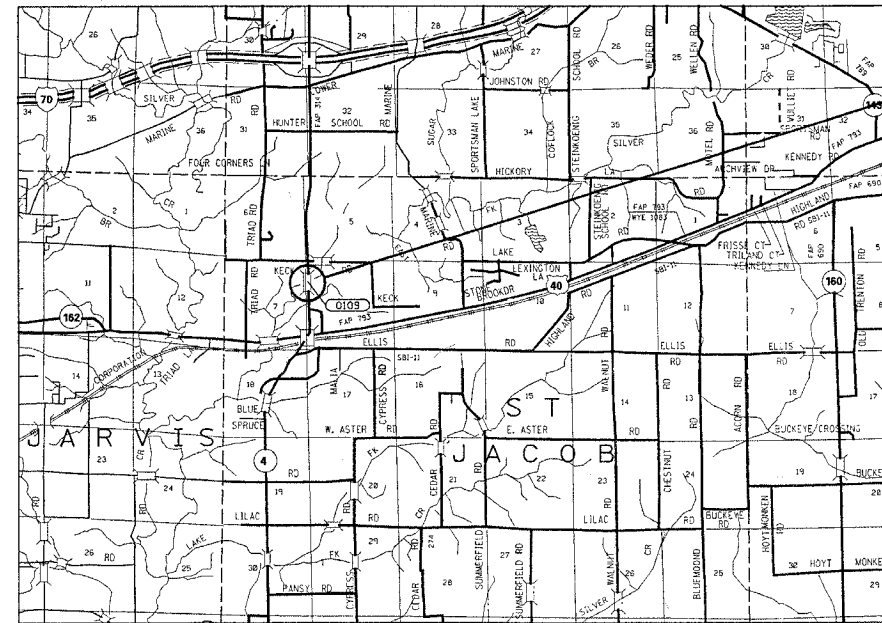
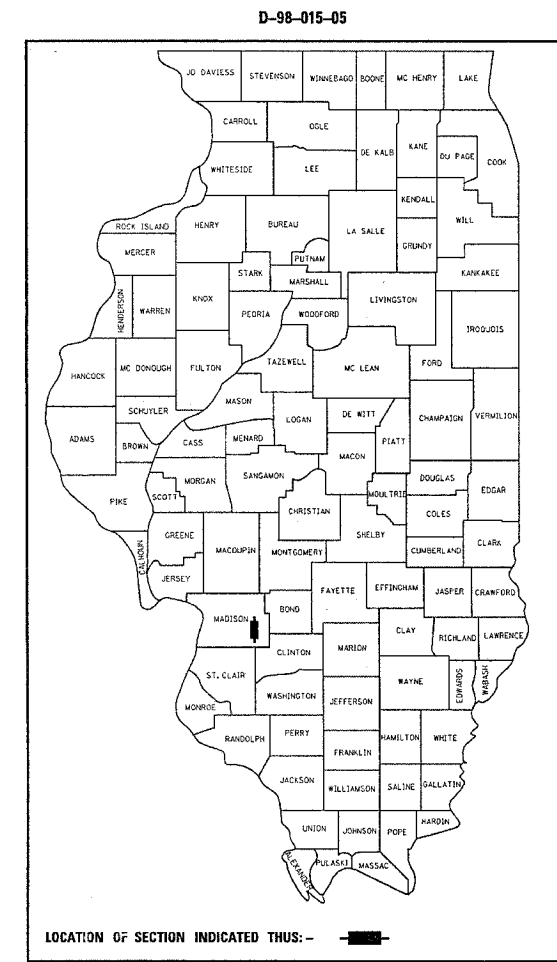
FAP ROUTE	SECTION	COUNTY	TOTAL SHEETS	SHEET NO.
314	110BR-I	MADISON	10	1

STATE OF ILLINOIS  
DEPARTMENT OF TRANSPORTATION  
DIVISION OF HIGHWAYS

**PROPOSED  
HIGHWAY PLANS**

**FAP ROUTE 314 (IL ROUTE 4)  
SECTION 110BR-I  
DECK REPAIR  
MADISON COUNTY  
C-98-033-05**

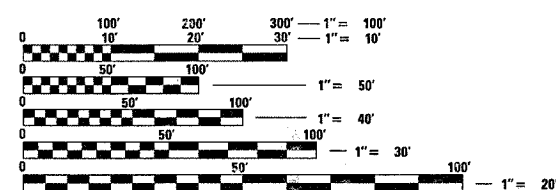
FOR INDEX OF SHEETS, SEE SHEET NO. 2



FOUR SPAN PPC DECK BEAMS WITH BITUMINOUS OVERLAY OVER EAST FORK OF SILVER CREEK  
BEGIN STA. 765 + 04.21  
END STA. 767 + 05.60  
SN 060-0109

PROJECT ENGINEER: PATTI LeBEAU (618) 346-3179  
SQUAD CONTACT: ARTHUR MUEHLFELD (618) 346-3188

MICROFILMED \_\_\_\_\_  
REEL NUMBER \_\_\_\_\_  
AWARDED \_\_\_\_\_  
RESIDENT ENGINEER \_\_\_\_\_  
AS BUILT CHANGES WERE MADE ON THE FOLLOWING SHEETS \_\_\_\_\_

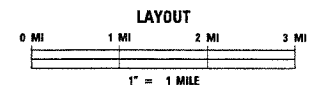


FULL SIZE PLANS HAVE BEEN PREPARED USING STANDARD ENGINEERING SCALES. REDUCED SIZED PLANS WILL NOT CONFORM TO STANDARD SCALES. IN MAKING MEASUREMENTS ON REDUCED PLANS, THE ABOVE SCALES MAY BE USED.

J.U.L.I.E.  
JOINT UTILITY LOCATION INFORMATION FOR EXCAVATION  
1-800-892-0123



FAP 314 (IL 4)  
ADT = 7550 (2003)  
ADT = 10,150 (2023)  
SU = 4.1 %  
MU = 18.2 %



LATITUDE: 38.7255°  
LONGITUDE: 89.8009°

GROSS LENGTH = 0.038 MI  
NET LENGTH = 0.038 MI

STATE OF ILLINOIS  
DEPARTMENT OF TRANSPORTATION  
DIVISION OF HIGHWAYS

SUBMITTED Oct 26 20 04  
Mary Kami  
DISTRICT ENGINEER

December 10 20 04  
Mike Hine  
ENGINEER OF DESIGN AND ENVIRONMENT

December 10 20 04  
Victor Maden  
DIRECTOR, DIVISION OF HIGHWAYS

**PRINTED BY THE AUTHORITY  
OF THE STATE OF ILLINOIS**

CONTRACT NO. 76865