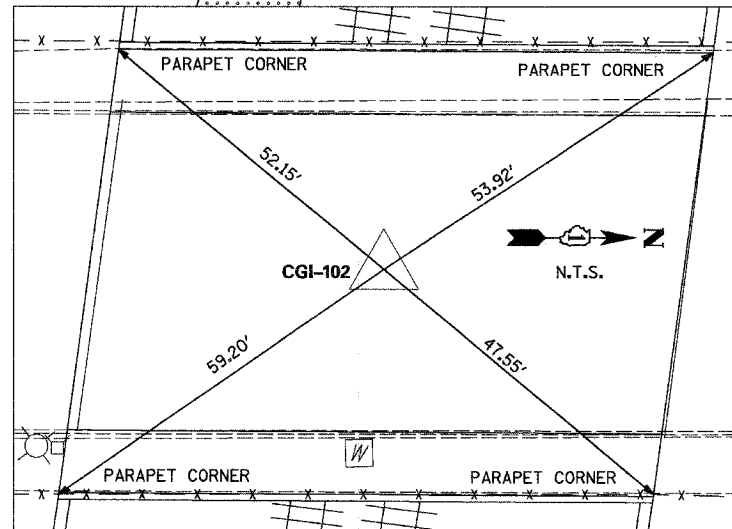
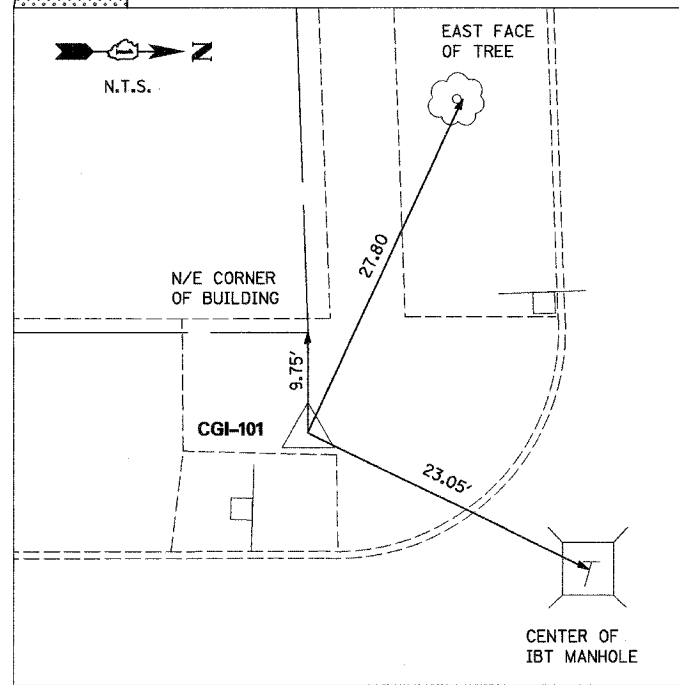
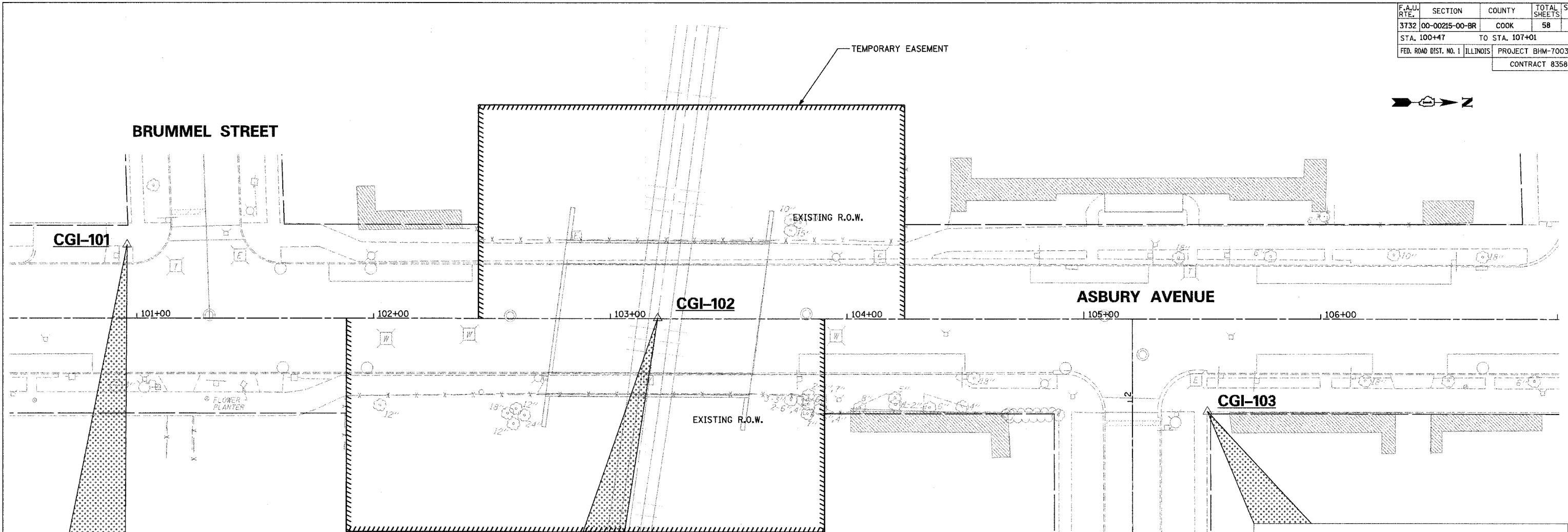


F.A.U. RTE.	SECTION	COUNTY	TOTAL SHEETS	SHEET NO.
3732	00-00215-00-BR	COOK	58	8
STA. 100+47		TO STA. 107+01		
FED. ROAD DIST. NO. 1		ILLINOIS PROJECT BHM-7003(802)		
CONTRACT 83584				



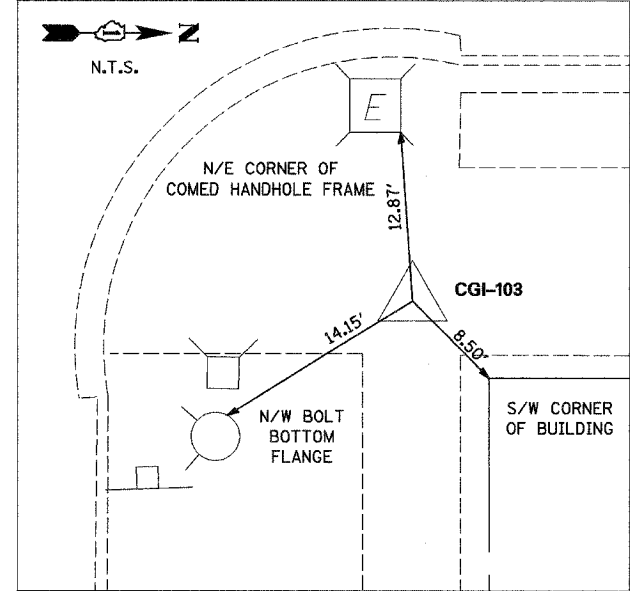
CONTROL POINTS

CGI-101 CHISELED "X" IN SIDEWALK AT SOUTHWEST CORNER OF BRUMMEL ST. AND ASBURY AVE.
 N = 10,000.00 E = 10,000.00 ELEV. = 32.96
 STA. 100+95.93 31.22' LT

CGI-102 PK NAIL IN C OF BRIDGE ON ASBURY AVE. OVER CTA YELLOW LINE.
 N = 10,230.92 E = 10,000.00 ELEV. = 35.36
 STA. 103+20.05 0.23' LT

CGI-103 CHISELED "X" IN BACK OF SIDEWALK AT NORTHEAST CORNER OF ASBURY AVE. AND HARVARD TER.
 N = 10,463.06 E = 10,008.34 ELEV. = 32.87
 STA. 105+52.20 38.96' RT

STATION	NORTHING	EASTING
101+00	10,008.866	10,030.038
102+00	10,107.977	10,016.739
103+00	10,207.089	10,003.440
104+00	10,306.201	9,990.142
105+00	10,405.313	9,976.843
106+00	10,504.425	9,963.544



REVISIONS	
NAME	DATE

Clorba Group, Inc.
 CONSULTING ENGINEERS
 5507 North Cumberland Avenue, Suite 402 Chicago, Illinois 60656
 Tel. 773.775.4009 Fax 773.775.4014 Email chicago@clorba.com

THE CITY OF EVANSTON
 ASBURY AVENUE BRIDGE IMPROVEMENTS

ALIGNMENT, TIES, &
 BENCHMARKS

SCALE: 1" = 20'
 DATE: OCTOBER, 2004

DRAWN BY: DLP
 CHECKED BY: RAY

DATE: 10/27/04
 FILENAME: N:\PROJ\3212\Design\alignment\3212-A\UGN&TIE.dgn