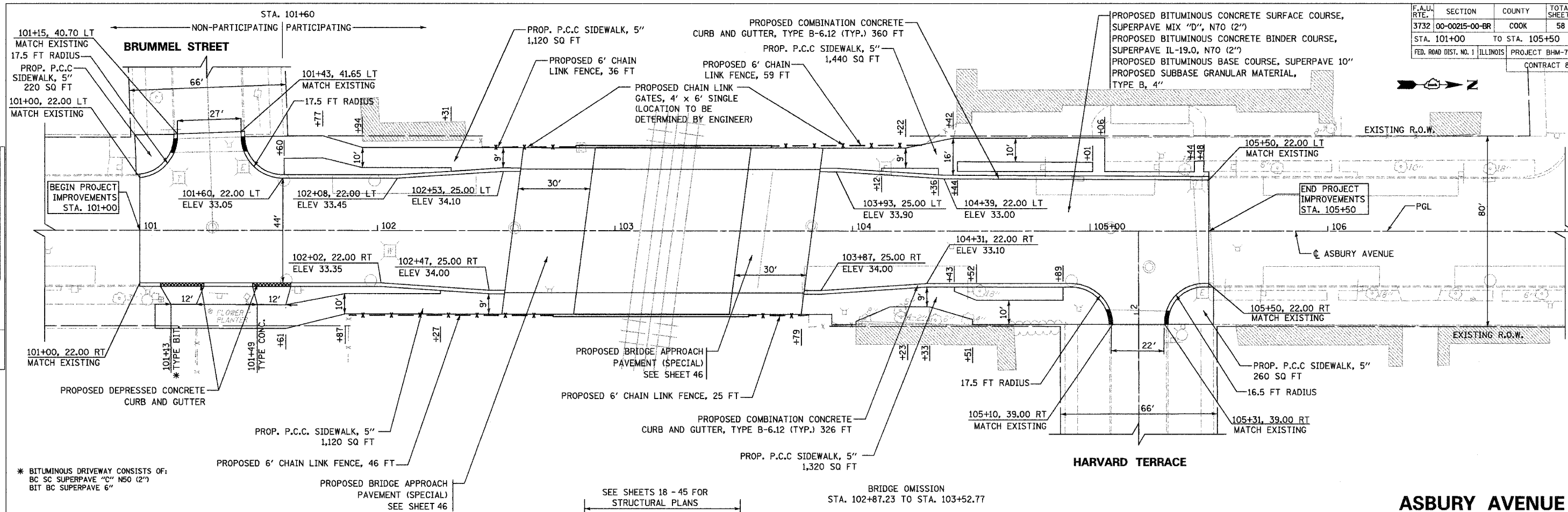


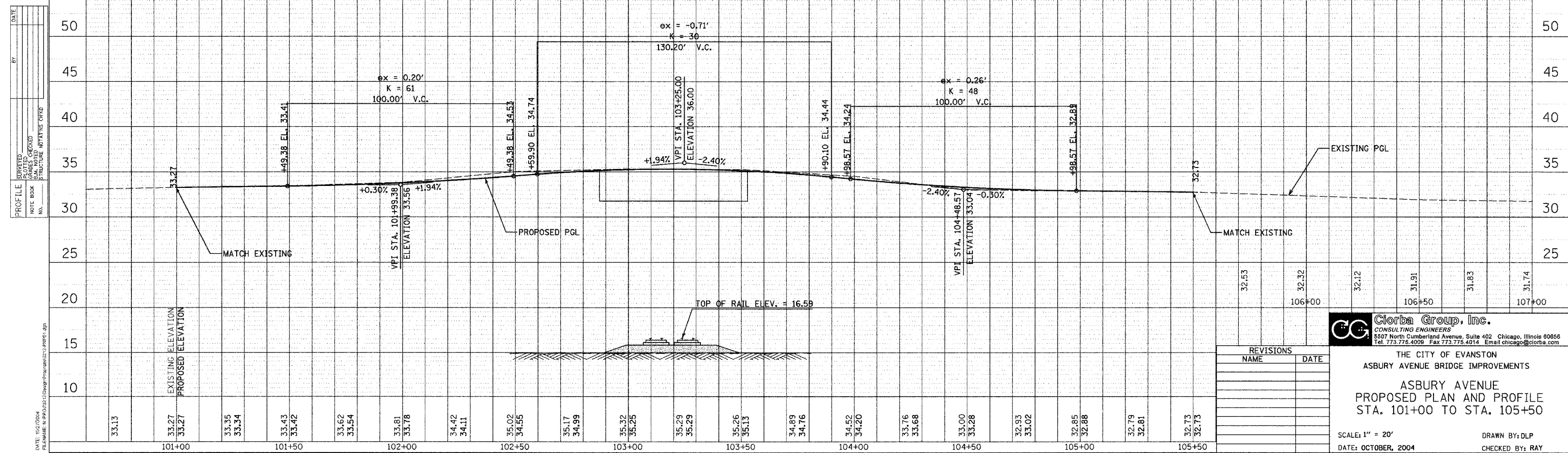
F.A.U. RTE.	SECTION	COUNTY	TOTAL SHEETS	SHEET NO.
3732	00-00215-00-BR	COOK	58	10
STA. 101+00		TO STA. 105+50		
FED. ROAD DIST. NO. 1		ILLINOIS		PROJECT BHM-7003(802)
CONTRACT 83584				



\* BITUMINOUS DRIVEWAY CONSISTS OF:  
 BC SC SUPERPAVE "C" N50 (2")  
 BIT BC SUPERPAVE 6"

SEE SHEETS 18 - 45 FOR STRUCTURAL PLANS  
 BRIDGE OMISSION  
 STA. 102+87.23 TO STA. 103+52.77

### ASBURY AVENUE



EXISTING ELEVATION	PROPOSED ELEVATION	STATION
33.13	33.27	101+00
33.35	33.34	101+50
33.43	33.42	101+50
33.62	33.54	102+00
33.81	33.78	102+00
34.42	34.11	102+50
35.02	34.55	102+50
35.17	34.99	103+00
35.32	35.25	103+00
35.29	35.29	103+50
35.26	35.13	103+50
34.89	34.76	104+00
34.52	34.20	104+00
33.76	33.68	104+50
33.00	33.28	104+50
32.93	33.02	105+00
32.85	32.88	105+00
32.79	32.81	105+50
32.73	32.73	105+50

STATION	ELEVATION
106+00	32.53
106+50	32.32
107+00	31.74

STATION	ELEVATION
106+00	32.12
106+50	31.91
107+00	31.83

STATION	ELEVATION
106+00	32.53
106+50	32.32
107+00	31.74

**Clorba Group, Inc.**  
 CONSULTING ENGINEERS  
 5507 North Cumberland Avenue, Suite 402 Chicago, Illinois 60656  
 Tel 773.775.4009 Fax 773.775.4014 Email chicago@clorba.com

THE CITY OF EVANSTON  
 ASBURY AVENUE BRIDGE IMPROVEMENTS  
 ASBURY AVENUE  
 PROPOSED PLAN AND PROFILE  
 STA. 101+00 TO STA. 105+50

SCALE: 1" = 20'  
 DATE: OCTOBER, 2004  
 DRAWN BY: DLP  
 CHECKED BY: RAY

DATE: \_\_\_\_\_  
 BY: \_\_\_\_\_  
 CHECKED: \_\_\_\_\_  
 DATE: \_\_\_\_\_