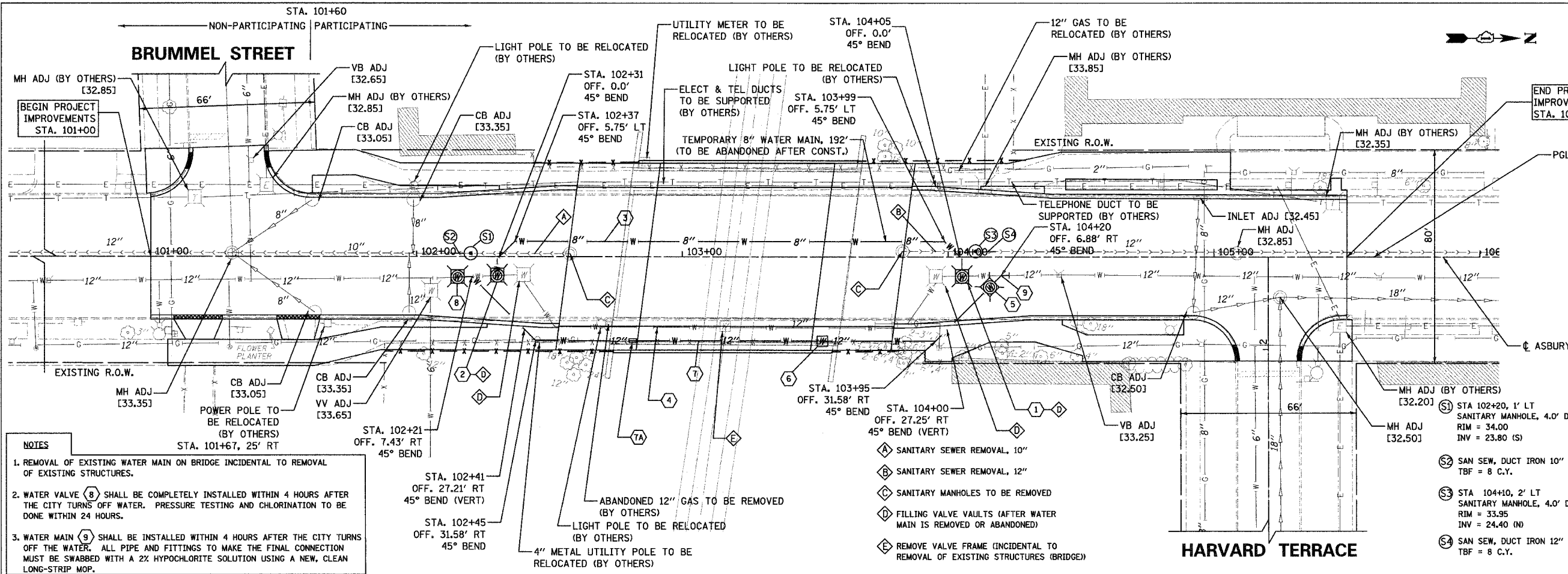


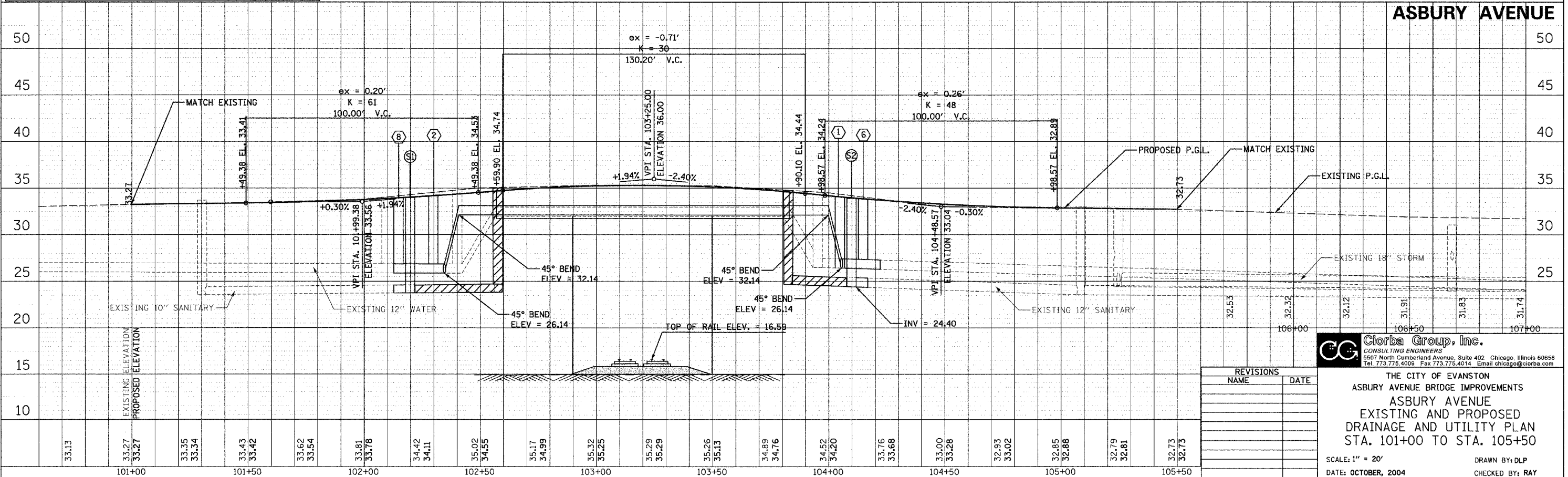
F.A.U. RTE.	SECTION	COUNTY	TOTAL SHEETS	SHEET NO.
3732	00-00215-00-BR	COOK	58	14
STA. 101+00 TO STA. 105+50				
FED. ROAD DIST. NO. 1 ILLINOIS		PROJECT BHM-7003(802)		
		CONTRACT 83584		



NOTES

- REMOVAL OF EXISTING WATER MAIN ON BRIDGE INCIDENTAL TO REMOVAL OF EXISTING STRUCTURES.
- WATER VALVE (8) SHALL BE COMPLETELY INSTALLED WITHIN 4 HOURS AFTER THE CITY TURNS OFF WATER. PRESSURE TESTING AND CHLORINATION TO BE DONE WITHIN 24 HOURS.
- WATER MAIN (9) SHALL BE INSTALLED WITHIN 4 HOURS AFTER THE CITY TURNS OFF THE WATER. ALL PIPE AND FITTINGS TO MAKE THE FINAL CONNECTION MUST BE SWABBED WITH A 2% HYPOCHLORITE SOLUTION USING A NEW, CLEAN LONG-STRIP MOP.

- SUGGESTED WATER MAIN INSTALLATION SEQUENCE**
- STA 104+05, 7' RT PRESS CONNECT 12" X 8" WATER VALVES 8" CORP STOPS 1" VV TA 5' DIA TIF CL RIM = 33.95
 - STA 102+30, 7' RT PRESS CONNECT 12" X 8" WATER VALVES 8" CORP STOPS 2" VV TA 5' DIA TIF CL RIM = 34.04
 - PVC WATER MAIN 8" - 105' PVC WATER MAIN, 8", SUSPEN-86' TBF = 25 C.Y.
 - WATER MAIN REMOVAL 12" - 87' (SEE NOTE 1)
 - STA 104+15, 11' RT WATER VALVES 12" CORP STOPS 2" VV TA 5' DIA TIF CL RIM = 33.65
 - STA 103+53, 31.58' RT AIR RELEASE VALVE INLETS, TA TIF CL RIM = 34.00 INV = 23.80 (S)
 - DI WATER MAIN 12", SPL - 128' WATER MAIN, 12", SUSPEN - 86' TBF = 36 C.Y.
 - STA 102+15, 7' RT WATER VALVES 12" (SEE NOTE 2) CORP STOPS 1" VV TA 5' DIA TIF CL RIM = 33.82
 - DI WATER MAIN 12"-7'(SEE NOTE 3) TBF = 2 C.Y.



PLAN	DATE	BY
PROFILE	DATE	BY

REVISIONS	
NAME	DATE

CG **Ciorba Group, Inc.**
CONSULTING ENGINEERS
5507 North Cumberland Avenue, Suite 402 Chicago, Illinois 60656
Tel: 773.775.4009 Fax: 773.775.4014 Email: chicago@ciorba.com

THE CITY OF EVANSTON
ASBURY AVENUE BRIDGE IMPROVEMENTS
ASBURY AVENUE
EXISTING AND PROPOSED
DRAINAGE AND UTILITY PLAN
STA. 101+00 TO STA. 105+50

SCALE: 1" = 20'
DATE: OCTOBER, 2004
DRAWN BY: DLP
CHECKED BY: RAY