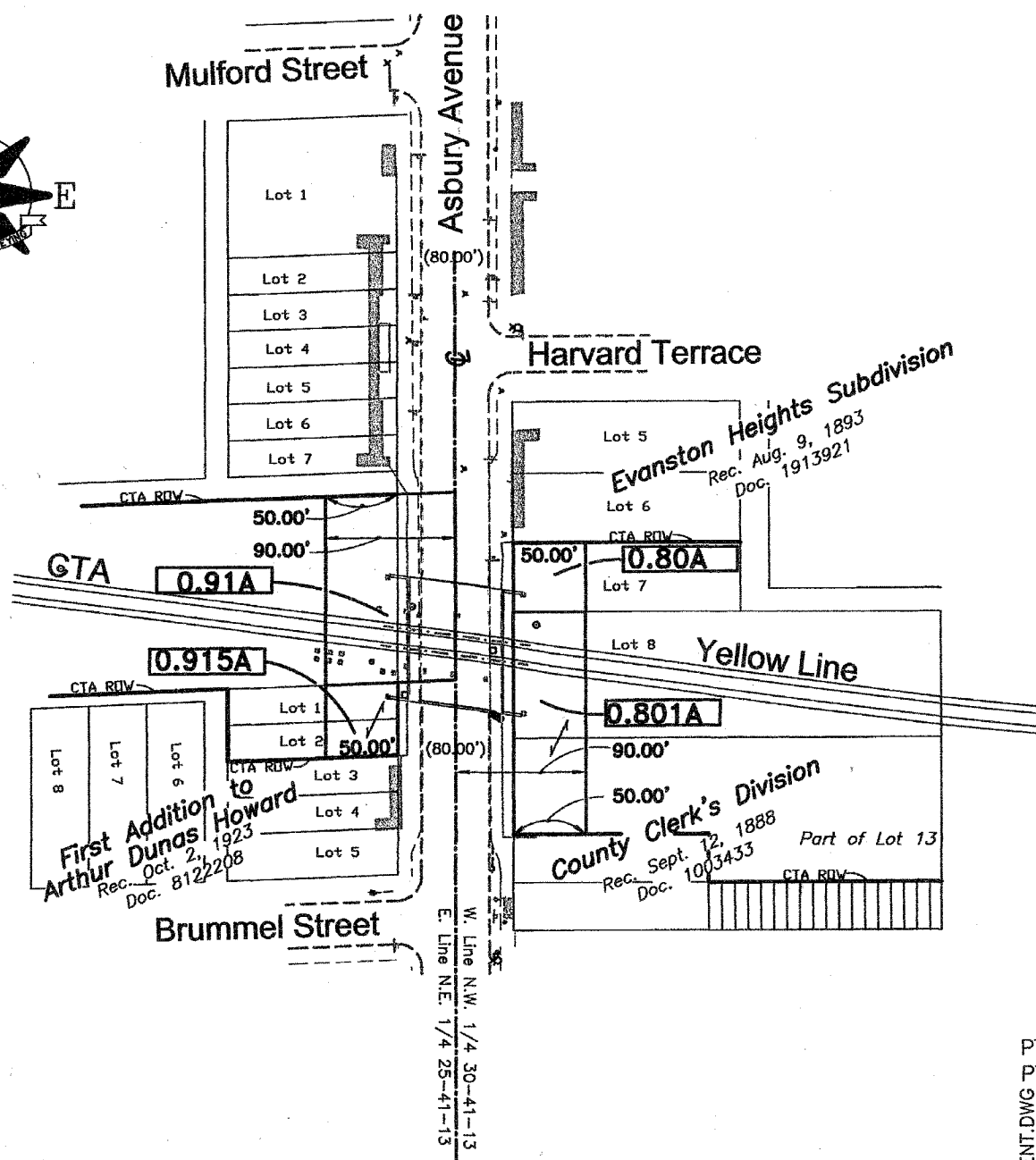
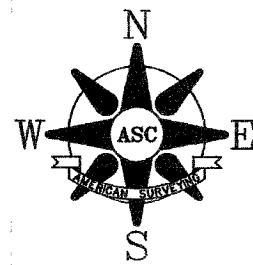


F.A.U. RTE.	SECTION	COUNTY	TOTAL SHEETS	SHEET NO.
3732	00-00215-00-BR	COOK	58	15
STA. 101+00		TO STA. 105+50		
FED. ROAD DIST. NO. 1	ILLINOIS	PROJECT BHM-7003(802)		
CONTRACT 83584				



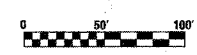
EXHIBIT

LEGEND

- 0.801 TEMPORARY EASEMENT
- (123.45') RECORDED DIMENSION
- 123.45' MEASURED DIMENSION
- CTA RIGHT-OF-WAY LINE
- ==== EASEMENT LINE (DESCRIBED PARCEL)
- ===== PROPERTY LINE (PLATTED / RECORD)

PT. E 1/2, NE 1/4, SEC. 25-41-13, EVANSTON TWP., COOK CO., IL.
 PT. W 1/2, NW 1/4, SEC. 30-41-14, EVANSTON TWP., COOK CO., IL.

ASC American Surveying Consultants 841 N. Galena Ave. / Dixon, IL. 61021 815-288-6231 6035 N. Northwest Highway/Chicago, IL. 60631 773-763-1387	SCALE: 1" = 100'
	DATE: 08/18/04
CLIENT: CITY OF EVANSTON	CAD: MW/CALC: MW
ASC NO. 204012	



FOR INFORMATION ONLY

REVISIONS	
NAME	DATE

Ciorba Group, Inc.
 CONSULTING ENGINEERS
 5507 North Cumberland Avenue, Suite 402 Chicago, Illinois 60656
 Tel. 773.775.4809 Fax 773.775.4014 Email chicago@ciorba.com

THE CITY OF EVANSTON
 ASBURY AVENUE BRIDGE IMPROVEMENTS
 ASBURY AVENUE
 TEMPORARY CONSTRUCTION
 ACCESS EASEMENT

SCALE: NTS
 DATE: OCTOBER, 2004

DRAWN BY: DLP
 CHECKED BY: RAY

DATE: 11/8/2004
 FILENAME: N:\PROJ\3732\Design\Misc Streets\3732 Easement\cmbl.dgn