

DATE: 11/09/2004
 FILENAME: N:\PROJ\3212\Design\Structural\3212-S-20-S21-S22-S-Abut.dgn

F.A.U. RTE.	SECTION	COUNTY	TOTAL SHEETS	SHEET NO.
3732	00-00215-00-BR	COOK	58	38
STA. 102+57.23		TO STA. 103+82.77		
FED. ROAD DIST. NO.	ILLINOIS PROJECT	BHM-7003(802)		
Sheet S-21 of S-28		CONTRACT 83584		

Notes:
 Space reinforcement in cap to miss anchor bolts.
 Reinforcement bars designated (E) shall be epoxy coated.
 Pour steps monolithically with cap.
 Hatched area to be poured after superstructure forms have been removed.
 Quantity of concrete included with Concrete Superstructures.

**ABUTMENT
 BILL OF MATERIAL**

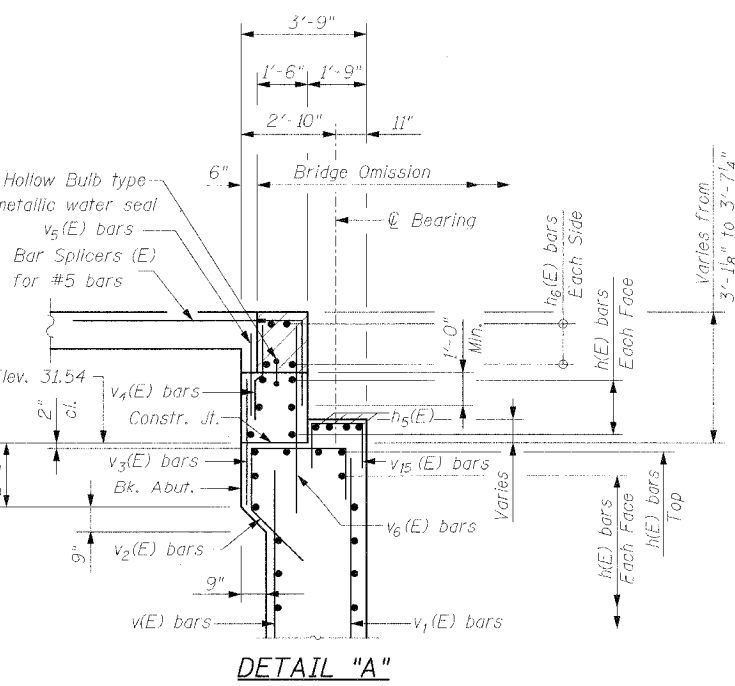
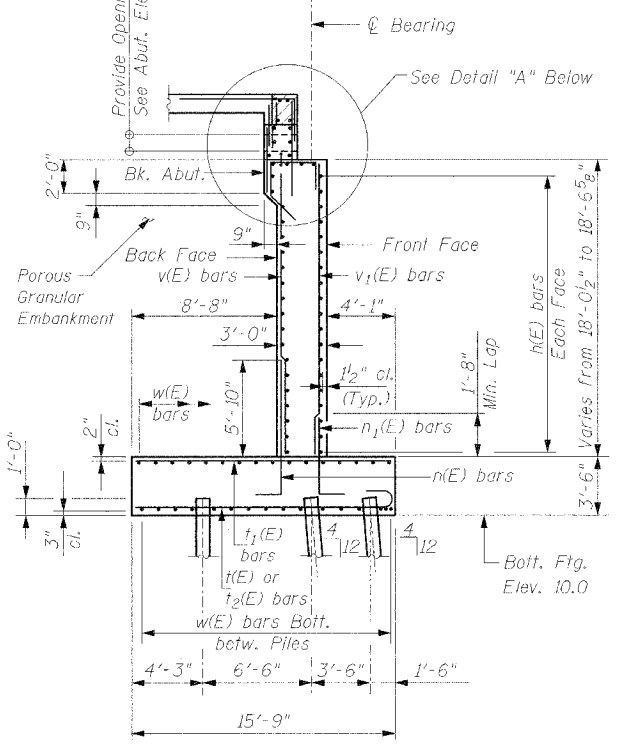
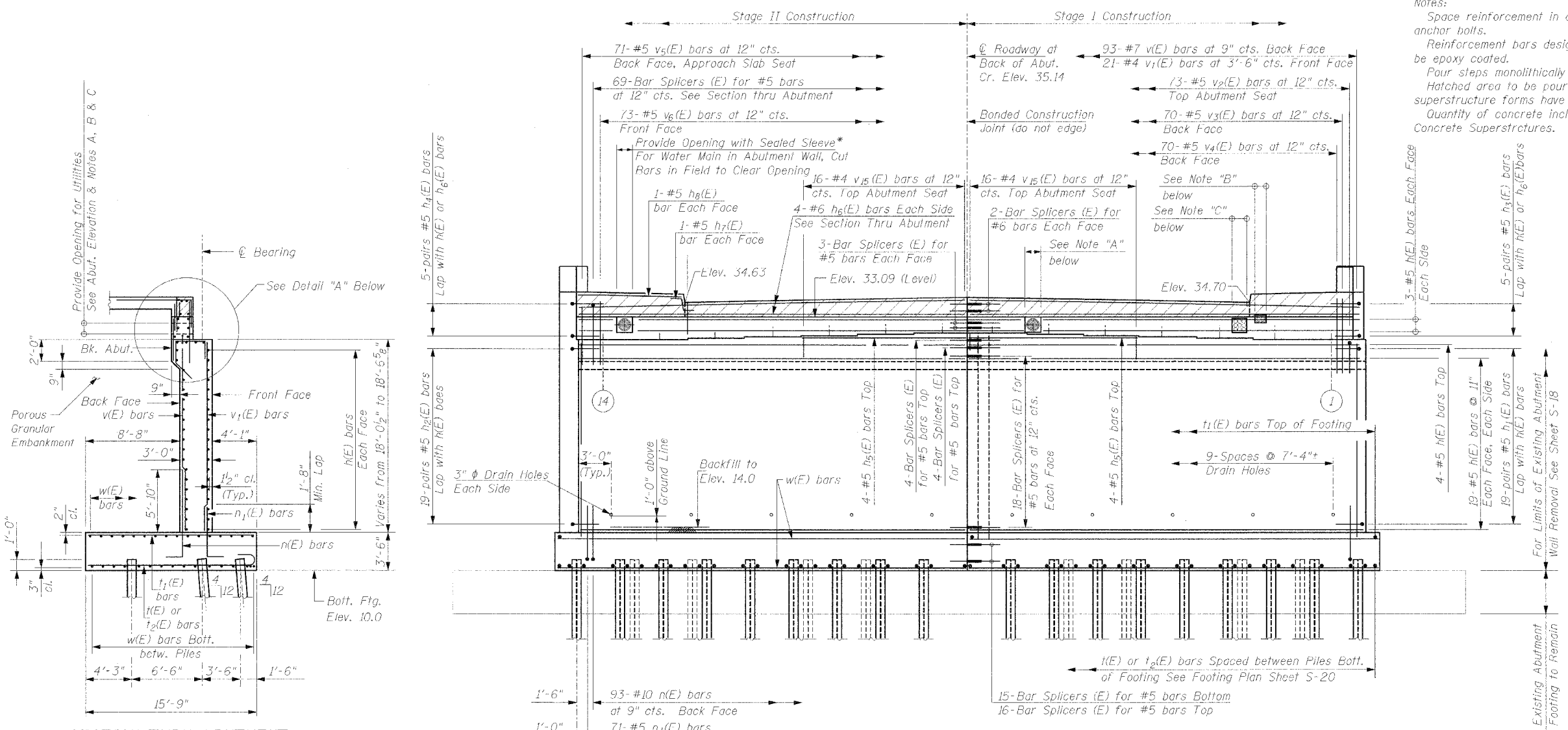
Bar No.	Size	Length	Shape
n(E)	96	#5	35'-9"
n ₁ (E)	38	#5	7'-3"
n ₂ (E)	38	#5	7'-3"
n ₃ (E)	10	#5	6'-2"
n ₄ (E)	10	#5	6'-2"
n ₅ (E)	8	#5	15'-4"
n ₆ (E)	8	#6	34'-9"
n ₇ (E)	4	#5	2'-5"
n ₈ (E)	4	#5	9'-7"
n ₉ (E)	38	#5	9'-6"
n ₁₀ (E)	16	#5	11'-7"
n ₁₁ (E)	38	#5	9'-9"
n ₁₂ (E)	16	#5	11'-10"
n ₁₃ (E)	51	#5	3'-0"
n ₁₄ (E)	24	#5	5'-8"
n ₁₅ (E)	38	#5	3'-8"
n ₁₆ (E)	30	#5	8'-4"
n ₁₇ (E)	8	#5	7'-7"
t(E)	93	#10	10'-10"
t ₁ (E)	137	#5	5'-8"
t ₂ (E)	5	#9	11'-10"
t ₃ (E)	83	#9	16'-8"
t ₄ (E)	101	#8	15'-5"
t ₅ (E)	5	#9	11'-10"
v(E)	93	#7	17'-9"
v ₁ (E)	21	#4	17'-9"
v ₂ (E)	73	#5	9'-7"
v ₃ (E)	70	#5	3'-0"
v ₄ (E)	70	#5	3'-1"
v ₅ (E)	71	#5	2'-7"
v ₆ (E)	73	#5	4'-6"
v ₇ (E)	44	#5	23'-11"
v ₈ (E)	4	#5	5'-5"
v ₉ (E)	4	#5	5'-7"
v ₁₀ (E)	12	#5	2'-0"
v ₁₁ (E)	24	#5	5'-5"
v ₁₂ (E)	12	#5	2'-9"
v ₁₃ (E)	16	#5	18'-11"
v ₁₄ (E)	2	#5	15'-9"
v ₁₅ (E)	32	#4	4'-6"
w(F)	62	#5	37'-8"
Porous Granular Embankment		Cu. Yd.	425
Structure Excavation		Cu. Yd.	147
Concrete Structures		Cu. Yd.	341.4
Reinforcement Bars, Epoxy Coated		Pound	30,560
Furnishing Steel Piles HP 12x53		Foot	2,565
Test Piles		Each	1
Driving Steel Piles		Each	2,565
Bar Splicers		Each	154

Reinforcement bars designated (E) shall be epoxy coated.
 For details of Bar Splicers, see sheet S-27.
 Minimum lap 1'-8" for #5 bars & 5'-10" for #10 bars.

CG Clorba Group, Inc.
 CONSULTING ENGINEERS
 5001 NORTH CUMBERLAND AVENUE - CHICAGO, ILLINOIS 60630 - (773) 756-0065

CITY OF EVANSTON, ILLINOIS
 SOUTH ABUTMENT ELEVATION AND DETAILS
 ASBURY AVENUE OVER CTA YELLOW LINE
 SECTION 00-00215-00-BR
 COOK COUNTY
 STA. 103+20.00
 STRUCTURE NO. 016-6959

SCALE: NONE
 DATE: OCTOBER 2004
 FILE: 3212
 DRAWN BY: IMG
 CHECKED BY: SCD



ELEVATION
 (Looking South)

* See "Water Main 12", Suspended" Special Provision.
 Cost of sealed sleeve included in pay item "Water Main 12" Suspended".

Note "A":
 Provide Opening for 8" ϕ Temporary Water Pipe in Abutment Wall, Cut Bars in Field to Clear Opening (Typ.)

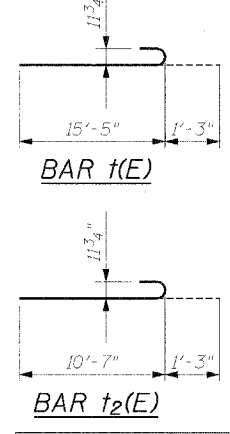
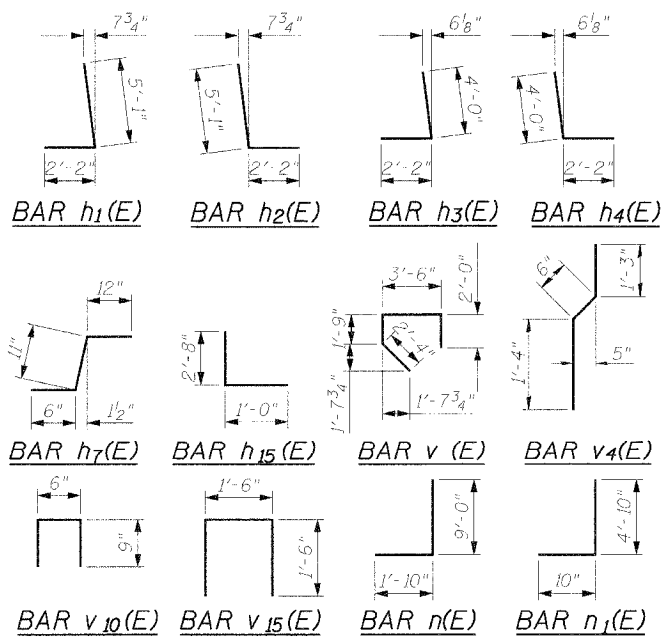
Note "B":
 SBC Utilities, Temporary & Permanent Support by others

Note "C":
 ComEd Utilities, Temporary & Permanent Support by Others.

BRIDGE SEAT ELEVATIONS

Beam	Elevation
1	31.62
2	31.62
3	31.72
4	31.82
5	31.91
6	31.99
7	32.06
8	32.06
9	31.97
10	31.88
11	31.78
12	31.66
13	31.54
14	31.54

*** Shim R required



REVISIONS	
NAME	DATE