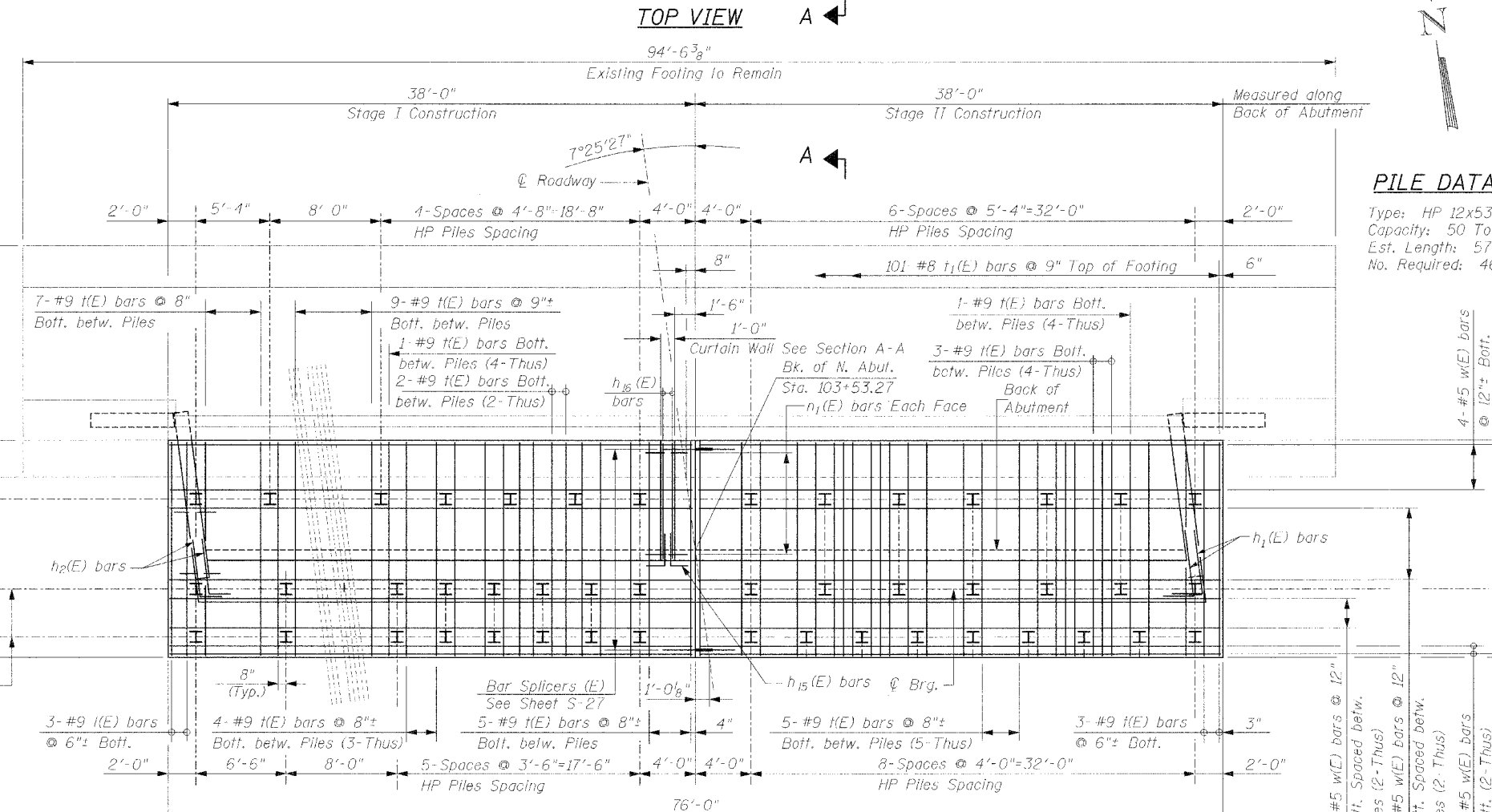
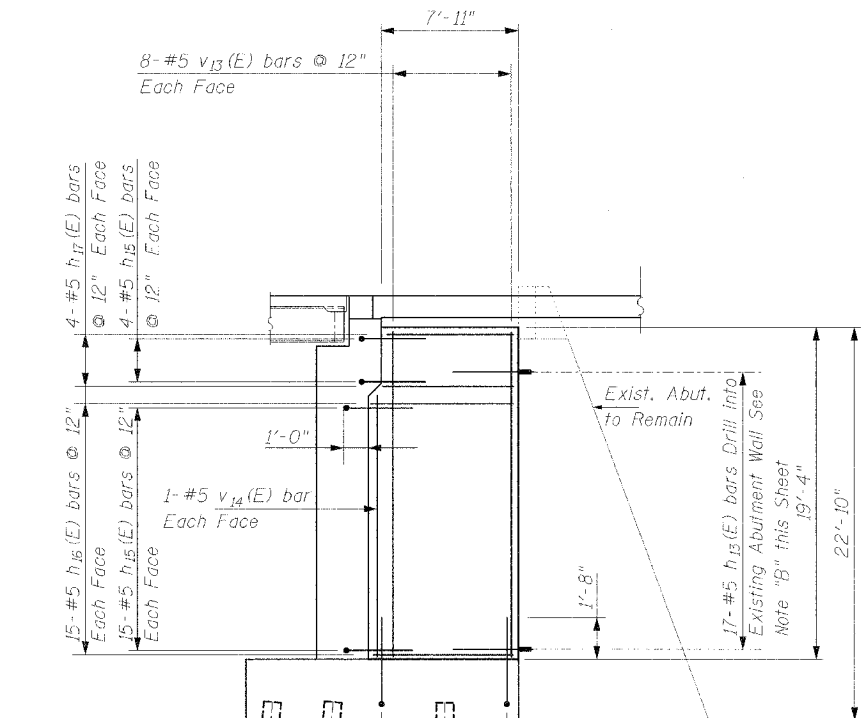
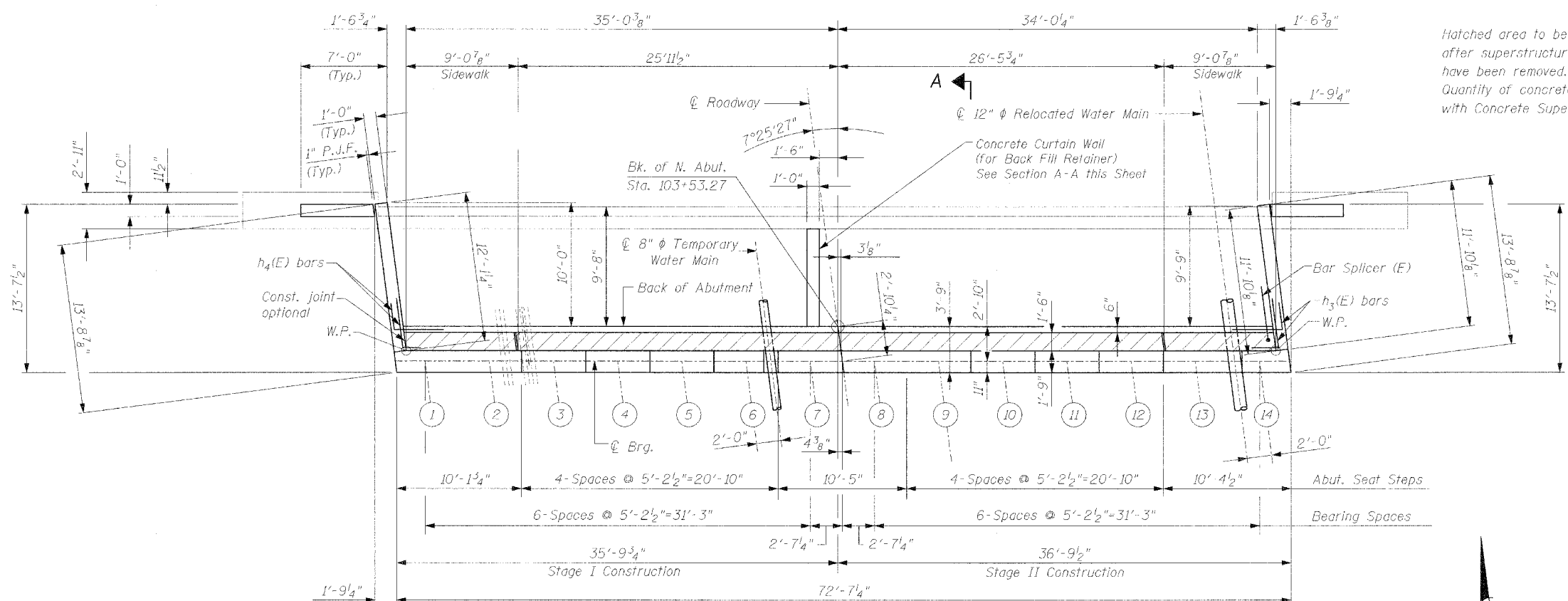


Hatched area to be poured after superstructure forms have been removed. Quantity of concrete included with Concrete Superstructures



**PILE DATA**  
 Type: HP 12x53  
 Capacity: 50 Ton  
 Est. Length: 57'  
 No. Required: 46

Note "B": Epoxy grout h<sub>13</sub>(E) bars in 9" minimum drilled holes according to Section 584 of the Standard Specifications.

Notes:  
 Reinforcement bars designated (E) shall be epoxy coated.  
 For details of Bar Splicers, see sheet S-27.  
 Minimum lap 1'-8" for #5 bars.

REVISIONS	
NAME	DATE

DATE: 10/29/2004  
 FILENAME: N:\PROJ\3212\Design\Structural\3212-S-23-S24-S24-S25-N.Abut.dgn