

F. A. U. NO.	SECTION	COUNTY	TOTAL SHEETS	SHEET NO.
1636	92-00037-03-PV	WILL	39+1	1
STA.		TO STA.		
FED. ROAD DIST. NO.	BLANKS	FED. NO. PROJECT		

STATE OF ILLINOIS  
DEPARTMENT OF TRANSPORTATION  
DIVISION OF HIGHWAYS

# PLANS FOR PROPOSED FEDERAL AID HIGHWAY

**INDEX OF SHEETS**

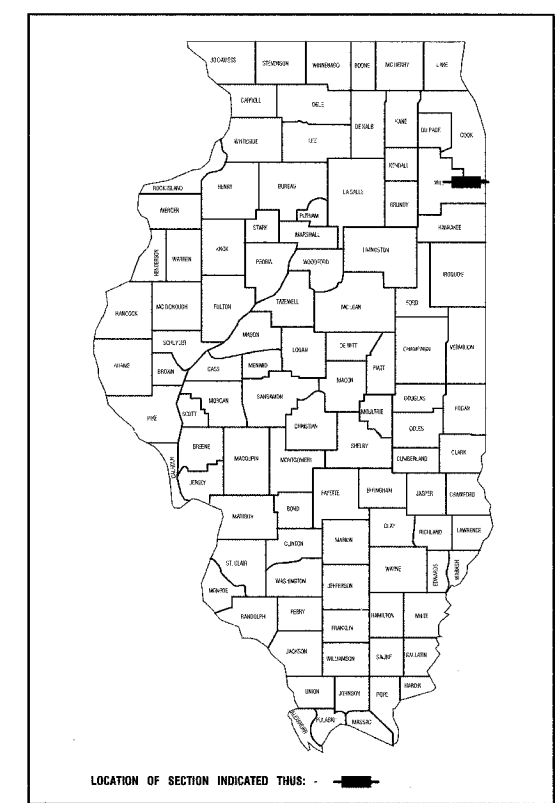
1	TITLE SHEET, INDEX OF SHEETS, STATE STANDARDS
2	GENERAL NOTES
3-4	SUMMARY OF QUANTITIES
5	TYPICAL CROSS SECTIONS
6-8	ALIGNMENT AND TIES
9-16	SUGGESTED STAGING AND TRAFFIC CONTROL
17-19	PLAN AND PROFILE
20-22	DRAINAGE AND UTILITIES
23-24	PAVEMENT MARKING AND SIGNING
25-26	LANDSCAPING AND EROSION CONTROL
27-32	DETAILS
33-39	CROSS SECTIONS

**STATE STANDARDS**

000001-04	STANDARD SYMBOLS, ABBREVIATIONS AND PATTERNS
280001-02	TEMPORARY EROSION CONTROL SYSTEMS
542301	PRECAST REINFORCED CONCRETE FLARED END SECTION
542401	METAL END SECTION FOR PIPE CULVERTS
542606	REINFORCED CONCRETE PIPE TEE
602001	CATCH BASINS, TYPE A
602301	INLET, TYPE A
602401	MANHOLE, TYPE A
602601	PRECAST REINFORCED CONCRETE FLAT SLAB TOP
602701	CAST IRON STEPS
604001-02	FRAME AND LIDS, TYPE 1
604091-01	FRAME AND GRATE, TYPE 24
606001-02	CONCRETE CURB & COMBINATION CONCRETE CURB & GUTTER
701501-03	URBAN LANE CLOSURE, 2-L, 2-W, UNDIVIDED
702001-05	TRAFFIC CONTROL DEVICES
720001	SIGN PANEL MOUNTING DETAILS
720006	SIGN PANEL ERECTION DETAILS
780001-01	TYPICAL PAVEMENT MARKINGS
781001-02	TYPICAL APPLICATIONS, RAISED REFLECTIVE PAVEMENT MARKERS
701326-02	LANE CLOSURE 2L, 2W PAVEMENT WIDENING FOR SPEEDS ≥ 45 MPH

SCALES  
 PLAN - 1"=50'  
 PROFILE HORIZ. - 1"=50'  
 PROFILE VERT. - 1"=5'  
 CROSS SECTIONS - 1"=10'

F.A.U. ROUTE 1636 (RIGHTON ROAD)  
(CRETE ROAD TO RONALD ROAD)  
RECONSTRUCTION  
PROJECT: M-HPD-0256(003)  
M.F.T. SECTION NO.: 92-00037-03-PV  
VILLAGE OF CRETE  
WILL COUNTY  
C-91-398-01



**DESIGN DESIGNATION - 382 (2022) - URBAN COLLECTOR - (BIT. 20)**

<b>RIGHTON ROAD: DESIGN PERIOD 20YR CLASS II STREET</b>	
DESIGN SPEED LIMIT - 35 MPH	IBR = 2.9
	PV = 2,125
1996 ADT - 1800	S <sub>U</sub> = 76
2008 ADT - 2315	M <sub>U</sub> = 109
	TF = 0.41
POSTED SPEED LIMIT - 35 MPH	D <sub>1</sub> req = 3.70
	D <sub>1</sub> prov = 3.99

THE PROPOSED IMPROVEMENT CONSISTS OF ROADWAY RECONSTRUCTION, STORM SEWERS, LANDSCAPING AND APPURTENANT WORK.

STATE OF ILLINOIS  
DEPARTMENT OF TRANSPORTATION

APPROVED 2-14-2003 [Signature] LOCAL AGENCY OFFICIAL

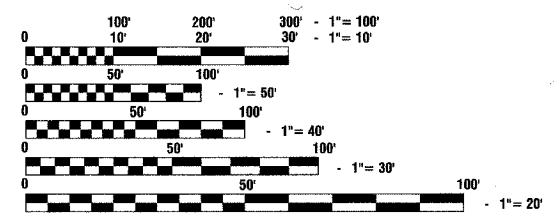
PASSED February 20, 2003 [Signature] DISTRICT ENGINEER OF LOCAL ROADS & STREETS

PASSED February 20, 2003 [Signature] DISTRICT ENGINEER

PREPARED BY OR UNDER THE DIRECT SUPERVISION OF:

[Signature] 2-17-2003

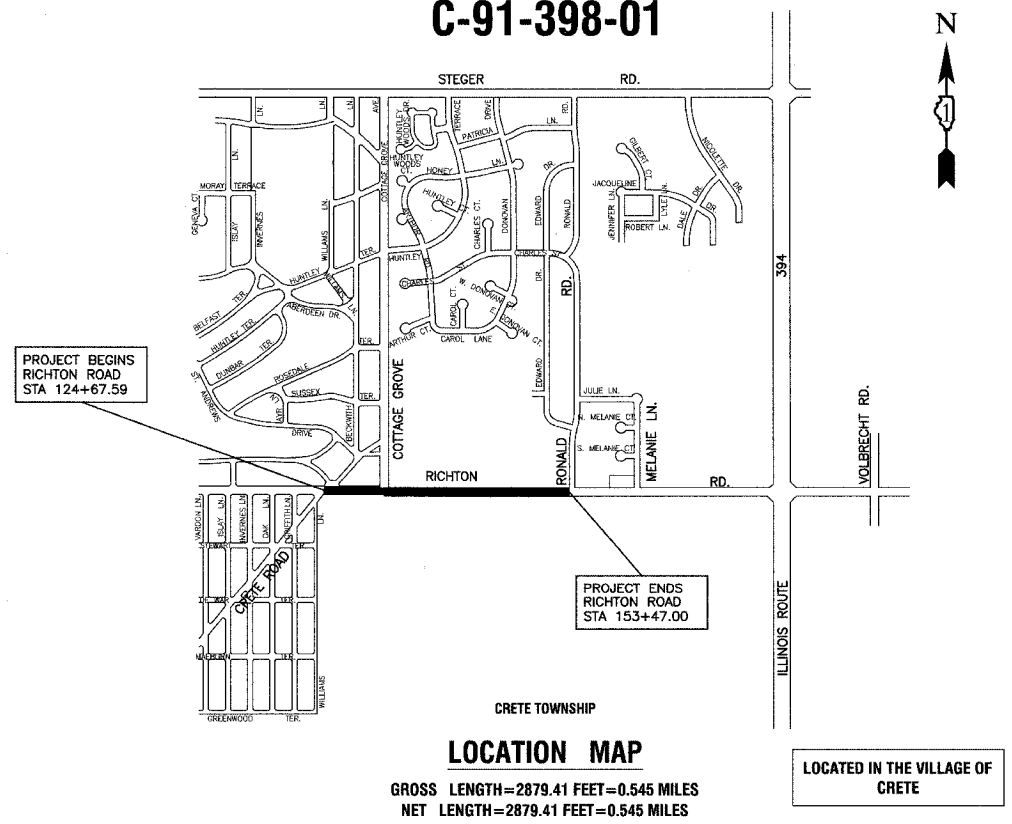
LICENSE EXPIRES: 11/30/03



FULL SIZE PLANS HAVE BEEN PREPARED USING STANDARD ENGINEERING SCALES, REDUCED SIZED PLANS WILL NOT CONFORM TO STANDARD SCALES, IN MAKING MEASUREMENTS ON REDUCED PLANS, THE ABOVE SCALES MAY BE USED.

J. U. L. I. E.  
JOINT UTILITY LOCATION INFORMATION FOR EXCAVATION  
1-800-892-0123

CONTRACT NO. 83680



FEDERAL AID DESIGN ENGINEER: MAZHAR KHAN 847-705-4179