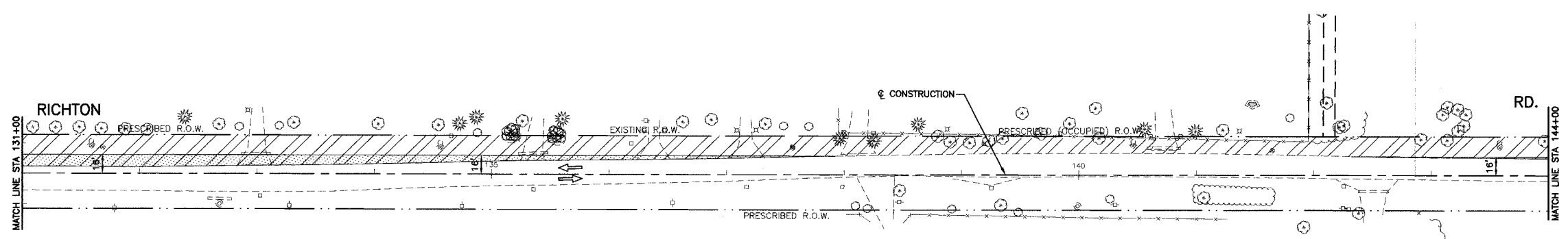
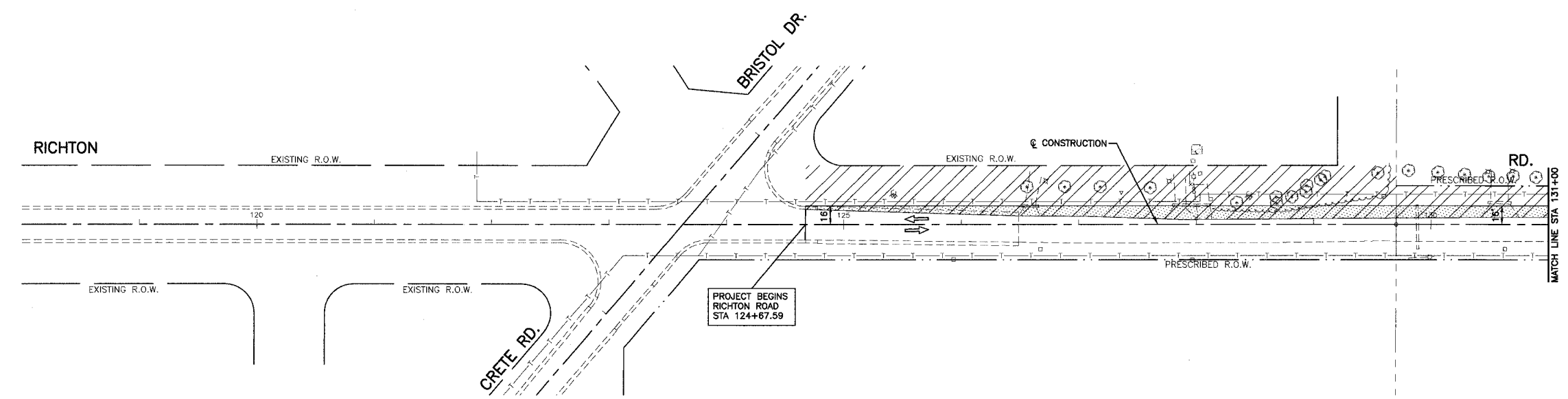
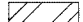


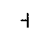
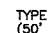




F.A.U. NO.	SECTION	COUNTY	TOTAL SHEETS	SHEET NO.
1636	92-00037-03-PV	WILL	39	11
STA.	TO STA.			
FED. ROAD DIST. NO.	ILLINOIS	FED. AID PROJECT		

83680



LEGEND

- | | |
|---|---|
|  WORK AREA | ① 4" YELLOW EDGE LINE - TEMPORARY PAVEMENT MARKINGS |
|  TEMPORARY PAVEMENT TO BE CONSTRUCTED (8") | ② 4" WHITE EDGE LINE - TEMPORARY PAVEMENT MARKINGS |
|  PAVEMENT CONSTRUCTION LIMITS | ③ 24" WHITE STOP BAR - TEMPORARY PAVEMENT MARKINGS |
|  VERTICAL PANEL WITH STEADY BURNING LIGHT (50' C-C) | ④ 4" DOUBLE YELLOW CENTER LINE - TEMPORARY PAVEMENT MARKING |
|  TYPE I OR II BARRICADE OR DRUM WITH STEADY BURNING LIGHTS (50' C-C) | |
|  TYPE III BARRICADE WITH STEADY BURNING LIGHT | |
|  SIGN | |

REVISIONS	
NAME	DATE

ILLINOIS DEPARTMENT OF TRANSPORTATION
 F.A.U. 1636 RICHTON ROAD
 SUGGESTED CONSTRUCTION STAGING
 STAGE 1 - RICHTON RD
 BEGIN PROJECT TO STA 144+00

SCALE: VERT. 1"=50'
 HORIZ. 1"=50'
 DATE 02-17-03

DRAWN BY EC
 CHECKED BY PKB