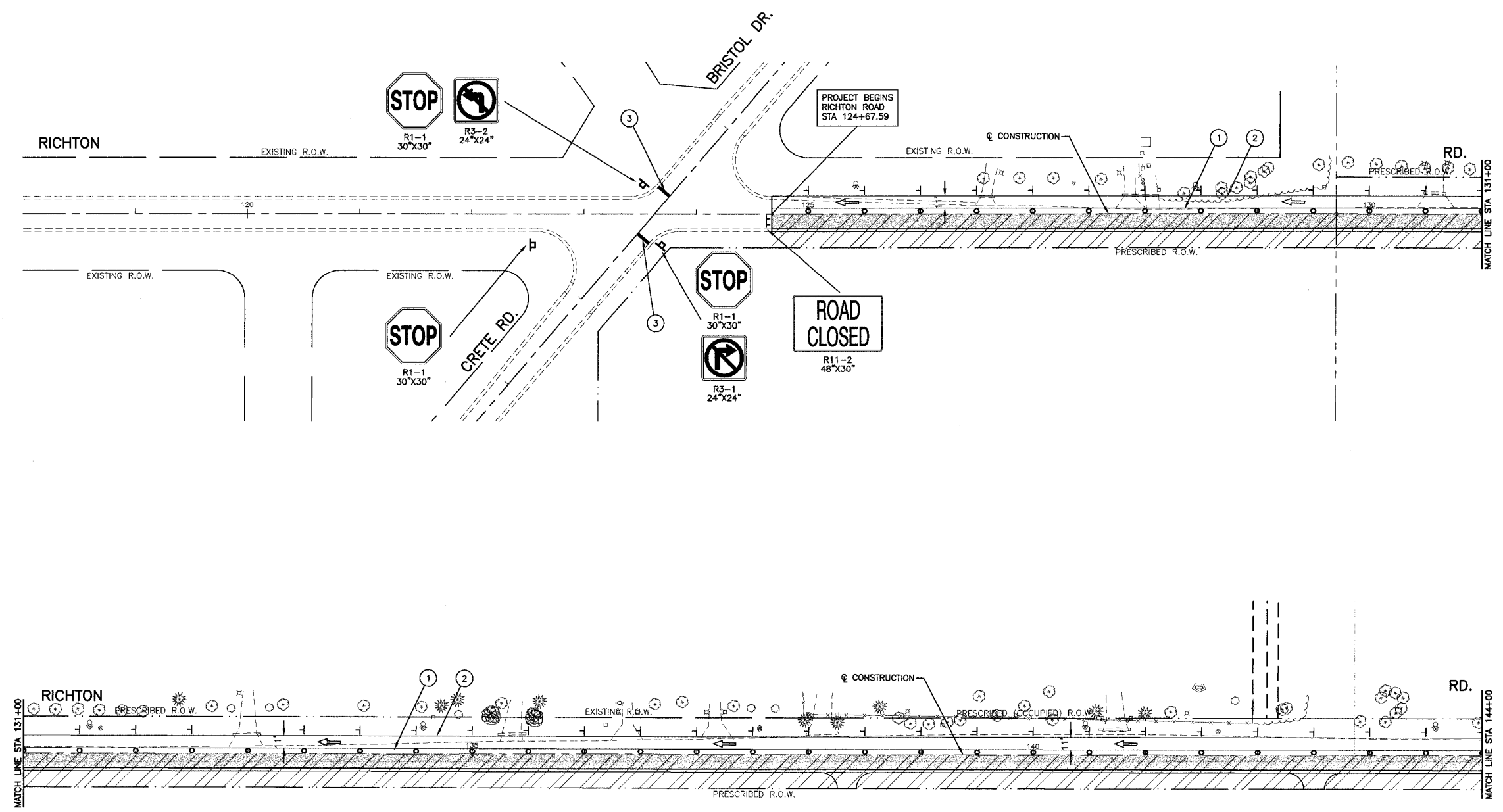


F.A.U. NO.	SECTION	COUNTY	TOTAL SHEETS	SHEET NO.
1636	92-00037-03-PV	WILL	39	13
STA.		TO STA.		
FED. ROAD DIST. NO.	ILLINOIS	FED. AID PROJECT		

83680



**LEGEND**

- WORK AREA
- TEMPORARY PAVEMENT TO BE CONSTRUCTED (8")
- PAVEMENT CONSTRUCTION LIMITS
- VERTICAL PANEL WITH STEADY BURNING LIGHT (50' C-C)
- TYPE I OR II BARRICADE OR DRUM WITH STEADY BURNING LIGHTS (50' C-C)
- TYPE III BARRICADE WITH STEADY BURNING LIGHT
- SIGN
- 1 4" YELLOW EDGE LINE - TEMPORARY PAVEMENT MARKINGS
- 2 4" WHITE EDGE LINE - TEMPORARY PAVEMENT MARKINGS
- 3 24" WHITE STOP BAR - TEMPORARY PAVEMENT MARKINGS
- 4 4" DOUBLE YELLOW CENTER LINE - TEMPORARY PAVEMENT MARKING

REVISIONS	
NAME	DATE

ILLINOIS DEPARTMENT OF TRANSPORTATION  
 F.A.U. 1636 RICHTON ROAD  
 SUGGESTED CONSTRUCTION STAGING  
 STAGE 2 - RICHTON RD  
 BEGIN PROJECT TO STA 144+00

SCALE: VERT. 1"=50'  
 HORIZ. 1"=50'  
 DATE 02-17-03

DRAWN BY EC  
 CHECKED BY PKB