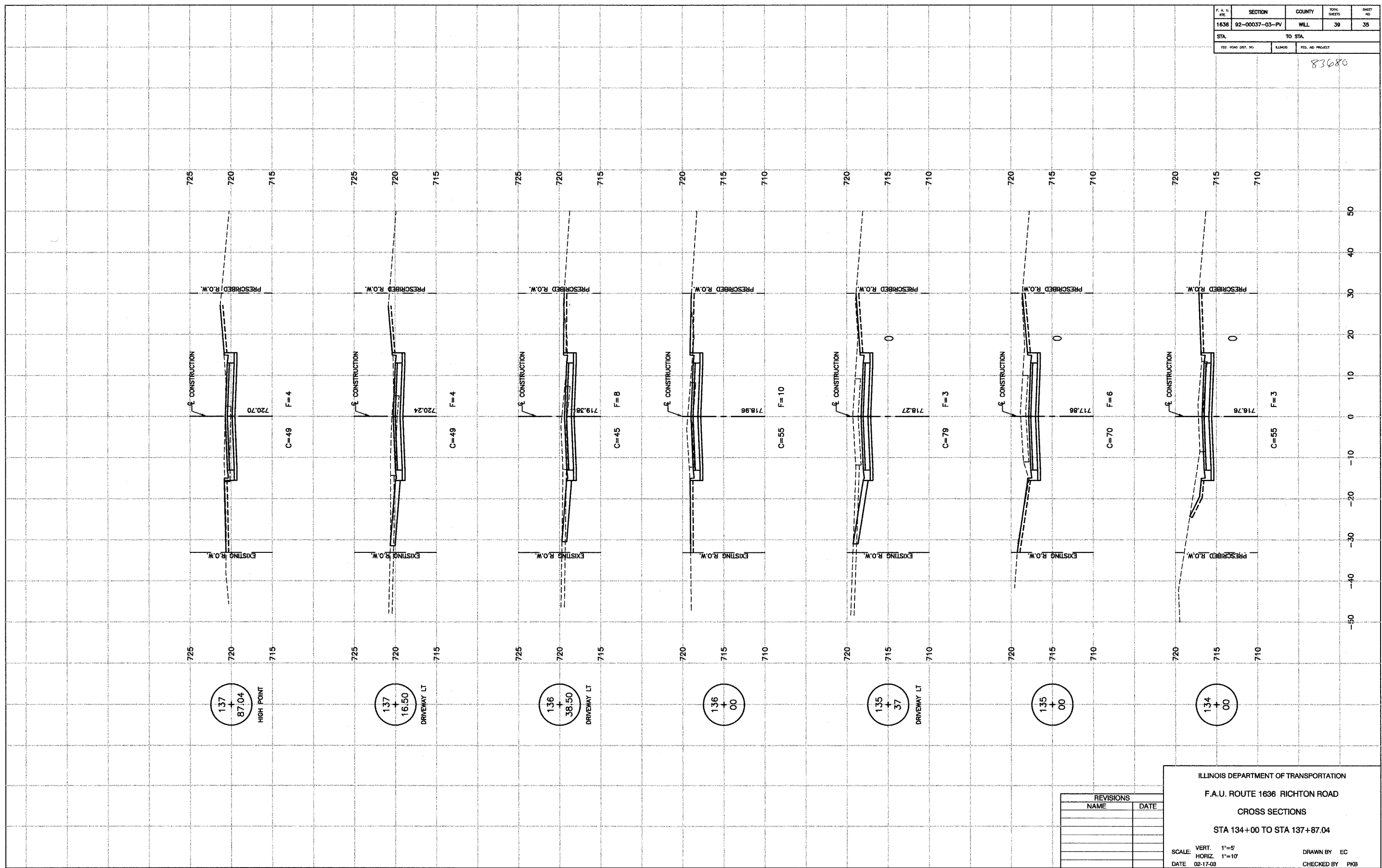


F. A. U. NO.	SECTION	COUNTY	TOTAL SHEETS	SHEET NO.
1636	92-00037-03-PV	WILL	39	35
STA.	TO STA.			
ILLINOIS	FED. AID PROJECT			

83680



137  
+  
87.04  
HIGH POINT

137  
+  
16.50  
DRIVEWAY LT

136  
+  
38.50  
DRIVEWAY LT

136  
+  
00

135  
+  
37  
DRIVEWAY LT

135  
+  
00

134  
+  
00

REVISIONS	
NAME	DATE

ILLINOIS DEPARTMENT OF TRANSPORTATION  
 F.A.U. ROUTE 1636 RICHTON ROAD  
 CROSS SECTIONS  
 STA 134+00 TO STA 137+87.04  
 SCALE: VERT. 1"=5'  
 HORIZ. 1"=10'  
 DATE 02-17-03  
 DRAWN BY EC  
 CHECKED BY PKB