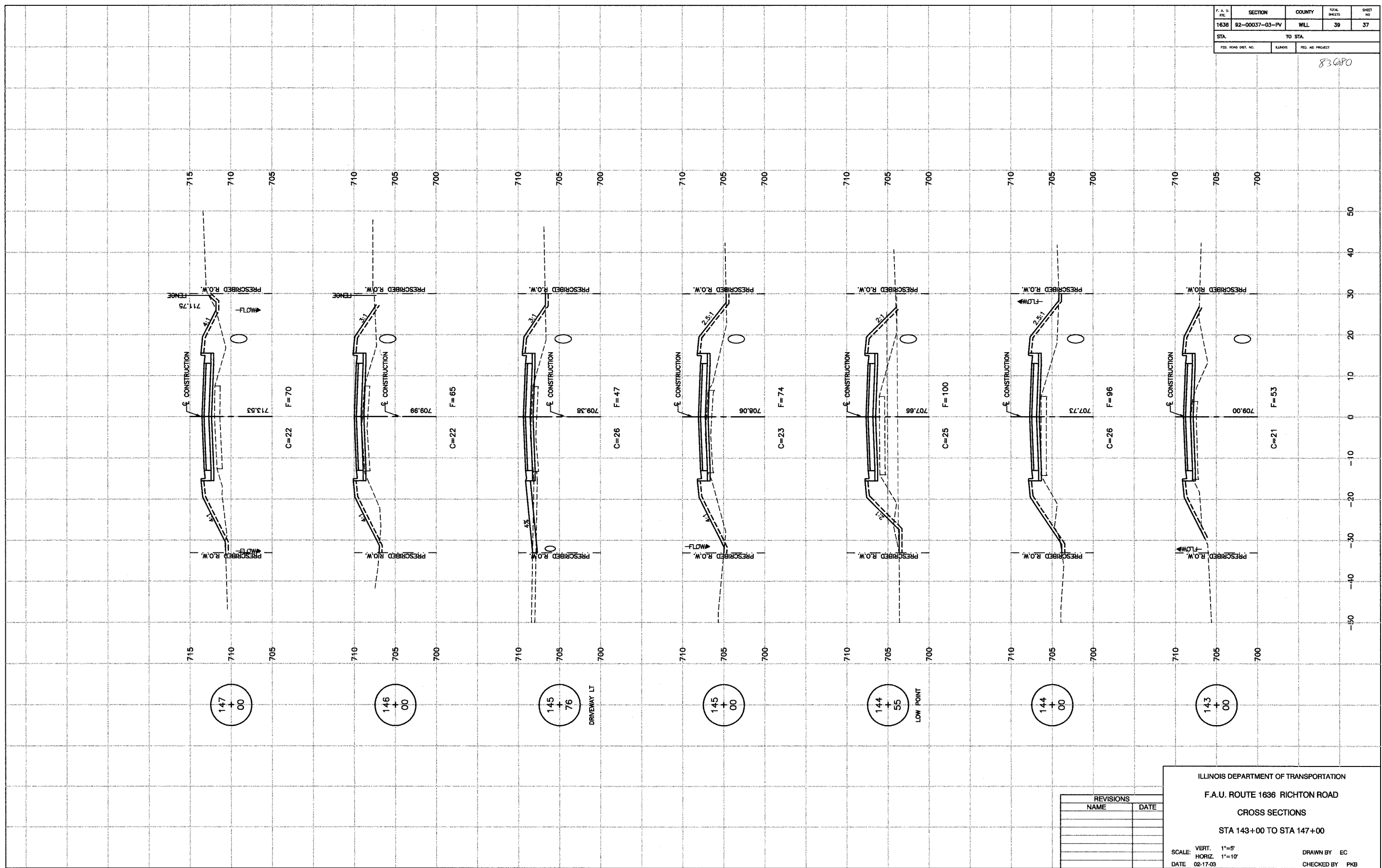


F. A. U. ETC.	SECTION	COUNTY	TOTAL SHEETS	SHEET NO.
1638	92-00037-03-PV	WILL	39	37
STA.	TO STA.			
FED. ROAD DIST. NO.	ILLINOIS	FED. AID PROJECT		

83080



147
+
00

146
+
00

145
+
76
DRIVEWAY LT

145
+
00

144
+
55
LOW POINT

144
+
00

143
+
00

REVISIONS	
NAME	DATE

ILLINOIS DEPARTMENT OF TRANSPORTATION
 F.A.U. ROUTE 1636 RICHTON ROAD
 CROSS SECTIONS
 STA 143+00 TO STA 147+00
 SCALE: VERT. 1"=5'
 HORIZ. 1"=10'
 DATE 02-17-03
 DRAWN BY EC
 CHECKED BY PKB