

SECTION	COUNTY	TOTAL SHEETS	SHEET NO.
02-00090-00-BT	DUPAGE	117	16
STA.	TO STA.		
IDOT PROJECT NO. M-8003(222)			
SALT CREEK GREENWAY TRAIL			
CONTRACT NO. 83713			

PROPOSED RUSTIC RAIL FENCE LIMITS:  
 STA. 9+818.6 LT TO STA. 10+003.5 LT  
 STA. 10+013 LT TO STA. 10+149.80 LT  
 FENCE TO BE OFFSET 3 m LT OF PROP. CL

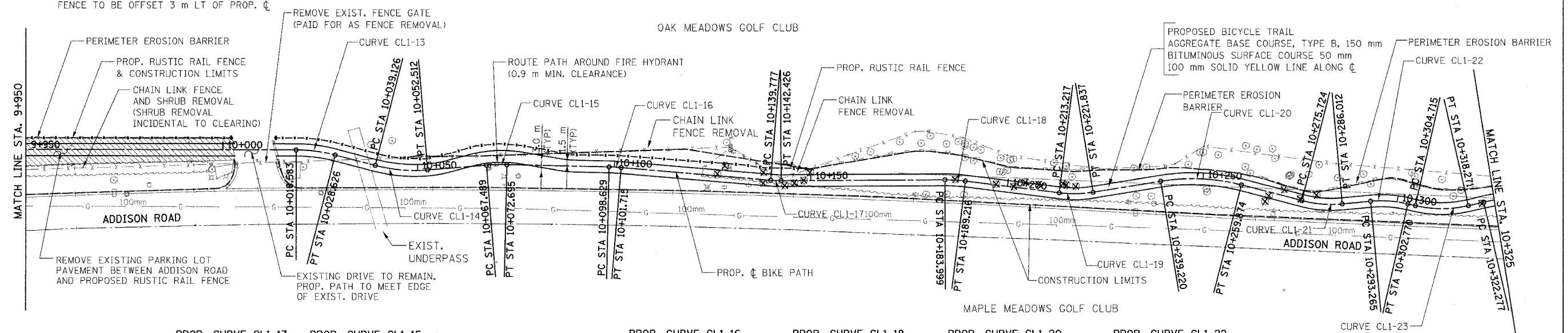
PROP. CURVE CL1-14  
 PI STA = 10+045.882  
 N = 50,791.916  
 E = 5,030.281  
 $\Delta = 19^\circ 10' 26''$  (LT)  
 R = 40,000 m  
 T = 6.756 m  
 L = 13.386 m  
 E = 0.567 m

PROP. CURVE CL1-17  
 PI STA = 10+141.102  
 N = 50,696.796  
 E = 5,028.224  
 $\Delta = 5^\circ 03' 35''$  (LT)  
 R = 30,000 m  
 T = 1.325 m  
 L = 2.649 m  
 E = 0.029 m

PROP. CURVE CL1-19  
 PI STA = 10+217.557  
 N = 50,620.577  
 E = 5,024.572  
 $\Delta = 16^\circ 27' 45''$  (LT)  
 R = 30,000 m  
 T = 4.340 m  
 L = 8.620 m  
 E = 0.312 m

PROP. CURVE CL1-21  
 PI STA = 10+280.919  
 N = 50,558.267  
 E = 5,021.921  
 $\Delta = 19^\circ 38' 55''$  (LT)  
 R = 30,000 m  
 T = 5.195 m  
 L = 10.288 m  
 E = 0.446 m

PROP. CURVE CL1-23  
 PI STA = 10+311.611  
 N = 50,527.809  
 E = 5,020.454  
 $\Delta = 25^\circ 53' 22''$  (LT)  
 R = 30,000 m  
 T = 6.896 m  
 L = 13.556 m  
 E = 0.782 m



PROP. CURVE CL1-13  
 PI STA = 10+023.631  
 N = 50,813.515  
 E = 5,035.847  
 $\Delta = 14^\circ 23' 11''$  (RT)  
 R = 40,000 m  
 T = 5.048 m  
 L = 10.044 m  
 E = 0.317 m

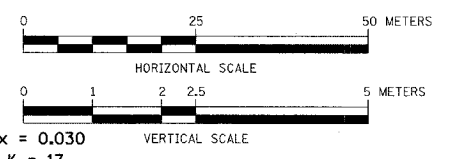
PROP. CURVE CL1-15  
 PI STA = 10+070.095  
 N = 50,767.660  
 E = 5,032.286  
 $\Delta = 5^\circ 57' 57''$  (RT)  
 R = 50,000 m  
 T = 2.605 m  
 L = 5.206 m  
 E = 0.068 m

PROP. CURVE CL1-16  
 PI STA = 10+100.172  
 N = 50,737.585  
 E = 5,031.633  
 $\Delta = 3^\circ 32' 10''$  (RT)  
 R = 50,000 m  
 T = 1.543 m  
 L = 3.086 m  
 E = 0.024 m

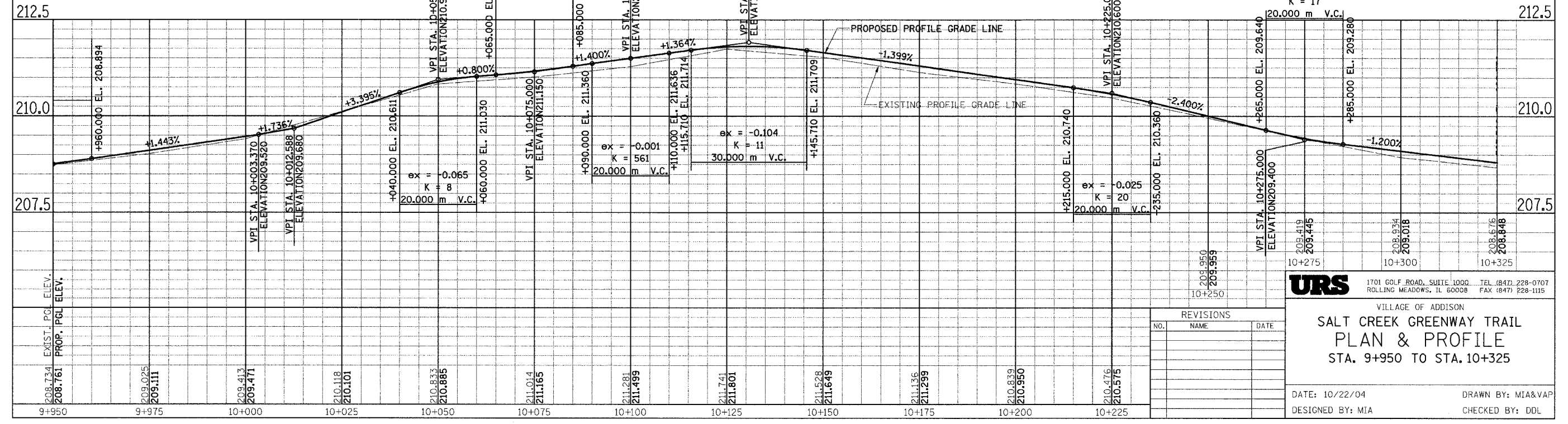
PROP. CURVE CL1-18  
 PI STA = 10+186.611  
 N = 50,651.286  
 E = 5,028.447  
 $\Delta = 7^\circ 28' 23''$  (RT)  
 R = 40,000 m  
 T = 2.612 m  
 L = 5.217 m  
 E = 0.085 m

PROP. CURVE CL1-20  
 PI STA = 10+249.696  
 N = 50,588.798  
 E = 5,029.759  
 $\Delta = 23^\circ 40' 08''$  (RT)  
 R = 50,000 m  
 T = 10.477 m  
 L = 20.655 m  
 E = 1.086 m

PROP. CURVE CL1-22  
 PI STA = 10+298.058  
 N = 50,541.098  
 E = 5,023.498  
 $\Delta = 18^\circ 09' 17''$  (RT)  
 R = 30,000 m  
 T = 4.793 m  
 L = 9.506 m  
 E = 0.380 m



FOR LEGEND SEE SHEET NO. 14



REVISIONS		
NO.	NAME	DATE

**URS**  
 1701 GOLF ROAD, SUITE 1000 TEL (847) 228-0707  
 ROLLING MEADOWS, IL 60008 FAX (847) 228-1115

VILLAGE OF ADDISON  
**SALT CREEK GREENWAY TRAIL  
 PLAN & PROFILE  
 STA. 9+950 TO STA. 10+325**

DATE: 10/22/04  
 DESIGNED BY: MIA  
 DRAWN BY: MIA&VAP  
 CHECKED BY: DDL