

PROP. CURVE CL1-25
 PI STA = 10+360.780
 N = 50,479.119
 E = 5,019.518
 $\Delta = 3^\circ 55' 40''$ (LT)
 R = 40,000 m
 T = 1,372 m
 L = 2,742 m
 E = 0.024 m

PROP. CURVE CL1-26
 PI STA = 10+378.150
 N = 50,461.838
 E = 5,017.757
 $\Delta = 12^\circ 16' 07''$ (LT)
 R = 30,000 m
 T = 3,224 m
 L = 6,424 m
 E = 0.173 m

PROP. CURVE CL1-28
 PI STA = 10+419.887
 N = 50,420.668
 E = 5,015.987
 $\Delta = 13^\circ 00' 35''$ (LT)
 R = 30,000 m
 T = 3,421 m
 L = 6,812 m
 E = 0.194 m

PROP. CURVE CL1-29
 PI STA = 10+437.960
 N = 50,402.571
 E = 5,015.555
 $\Delta = 7^\circ 32' 13''$ (LT)
 R = 30,000 m
 T = 1,976 m
 L = 3,946 m
 E = 0.065 m

PROP. CURVE CL1-31
 PI STA = 10+467.314
 N = 50,373.470
 E = 5,013.920
 $\Delta = 25^\circ 55' 11''$ (LT)
 R = 30,000 m
 T = 6,904 m
 L = 13,572 m
 E = 0.784 m

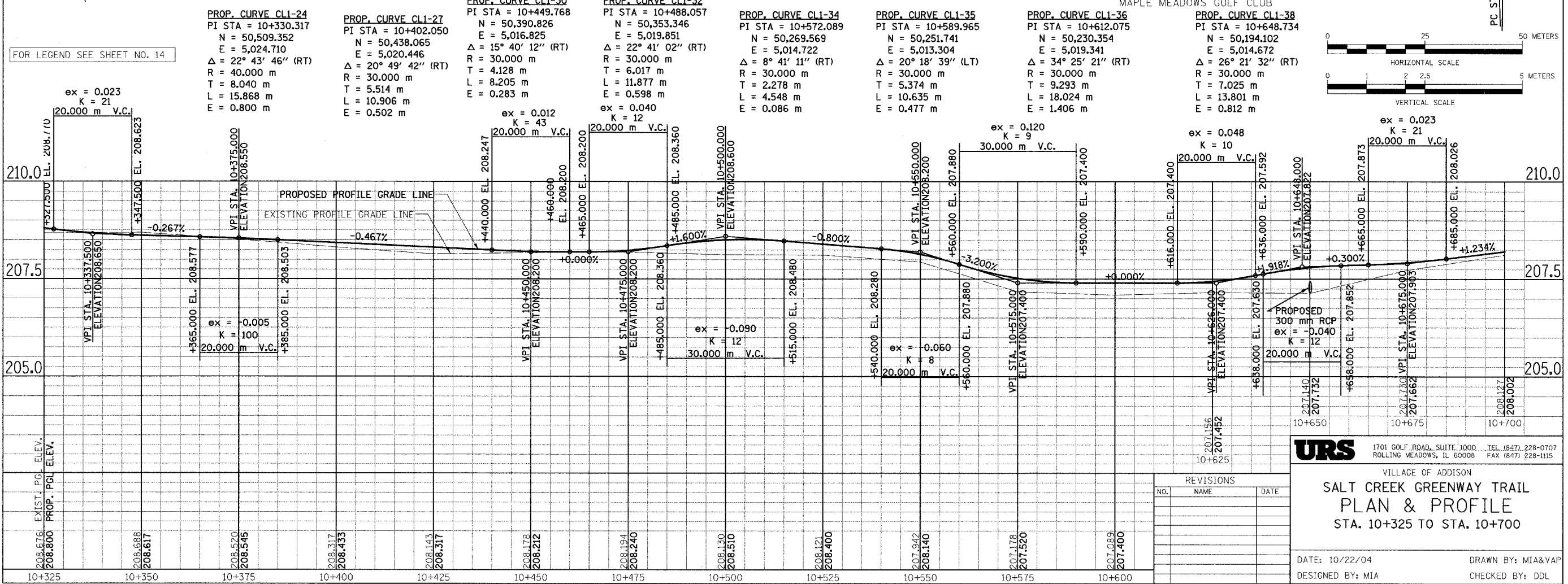
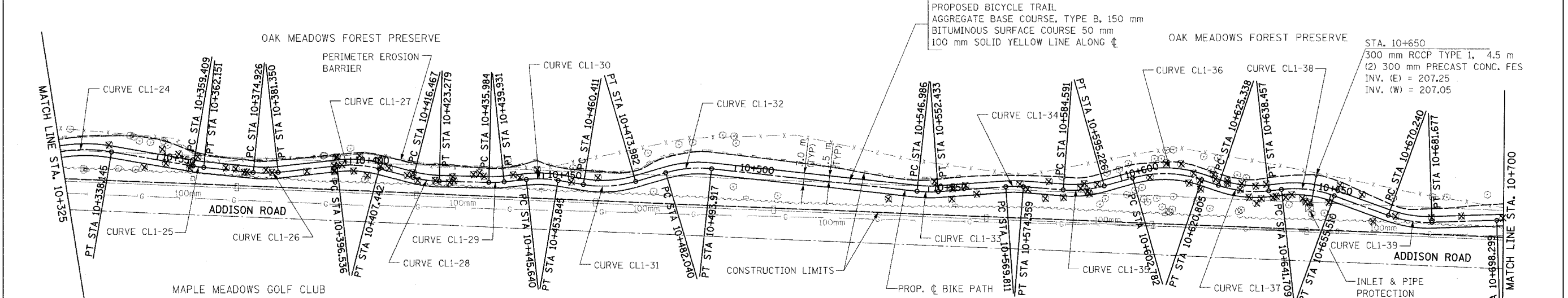
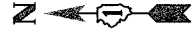
PROP. CURVE CL1-33
 PI STA = 10+549.717
 N = 50,291.897
 E = 5,013.106
 $\Delta = 10^\circ 24' 09''$ (LT)
 R = 30,000 m
 T = 2,731 m
 L = 5,447 m
 E = 0.124 m

PROP. CURVE CL1-35
 PI STA = 10+589.965
 N = 50,251.741
 E = 5,013.304
 $\Delta = 20^\circ 18' 39''$ (LT)
 R = 30,000 m
 T = 5,374 m
 L = 10,635 m
 E = 0.477 m

PROP. CURVE CL1-37
 PI STA = 10+632.004
 N = 50,210.939
 E = 5,012.785
 $\Delta = 25^\circ 03' 14''$ (LT)
 R = 30,000 m
 T = 6,666 m
 L = 13,118 m
 E = 0.732 m

PROP. CURVE CL1-39
 PI STA = 10+676.029
 N = 50,168.213
 E = 5,005.267
 $\Delta = 21^\circ 50' 34''$ (LT)
 R = 30,000 m
 T = 5,789 m
 L = 11,437 m
 E = 0.553 m

SECTION	COUNTY	TOTAL SHEETS	SHEET NO.
02-00090-00-BT	DUPAGE	117	17
STA. TO STA.			
IDOT PROJECT NO. M-8003(222)			
SALT CREEK GREENWAY TRAIL			
CONTRACT NO. 83713			



FOR LEGEND SEE SHEET NO. 14

EXIST. PGL ELEV.	PROP. PGL ELEV.
208.676	208.800
208.688	208.617
208.520	208.545
208.317	208.433
208.143	208.317
208.178	208.212
208.194	208.240
208.130	208.510
208.121	208.400
207.942	208.140
207.178	207.520
207.089	207.400

REVISIONS		
NO.	NAME	DATE

URS 1701 GOLF ROAD, SUITE 1000 TEL (847) 228-0707
 ROLLING MEADOWS, IL 60008 FAX (847) 228-1115

VILLAGE OF ADDISON
SALT CREEK GREENWAY TRAIL
PLAN & PROFILE
 STA. 10+325 TO STA. 10+700

DATE: 10/22/04 DRAWN BY: MIA&VAP
 DESIGNED BY: MIA CHECKED BY: DDL