

**PROP. CURVE CL2-5**  
 PI STA = 12+890.299  
 N = 48,639.564  
 E = 5,800.708  
 $\Delta = 30^\circ 08' 58''$  (RT)  
 R = 30.000 m  
 T = 8.080 m  
 L = 15.786 m  
 E = 1.069 m

**PROP. CURVE CL2-6**  
 PI STA = 12+910.487  
 N = 48,623.249  
 E = 5,813.226  
 $\Delta = 31^\circ 06' 18''$  (RT)  
 R = 30.000 m  
 T = 8.349 m  
 L = 16.287 m  
 E = 1.140 m

**PROP. CURVE CL2-7**  
 PI STA = 12+974.921  
 N = 48,558.806  
 E = 5,820.445  
 $\Delta = 12^\circ 39' 58''$  (RT)  
 R = 30.000 m  
 T = 3.330 m  
 L = 6.632 m  
 E = 0.184 m

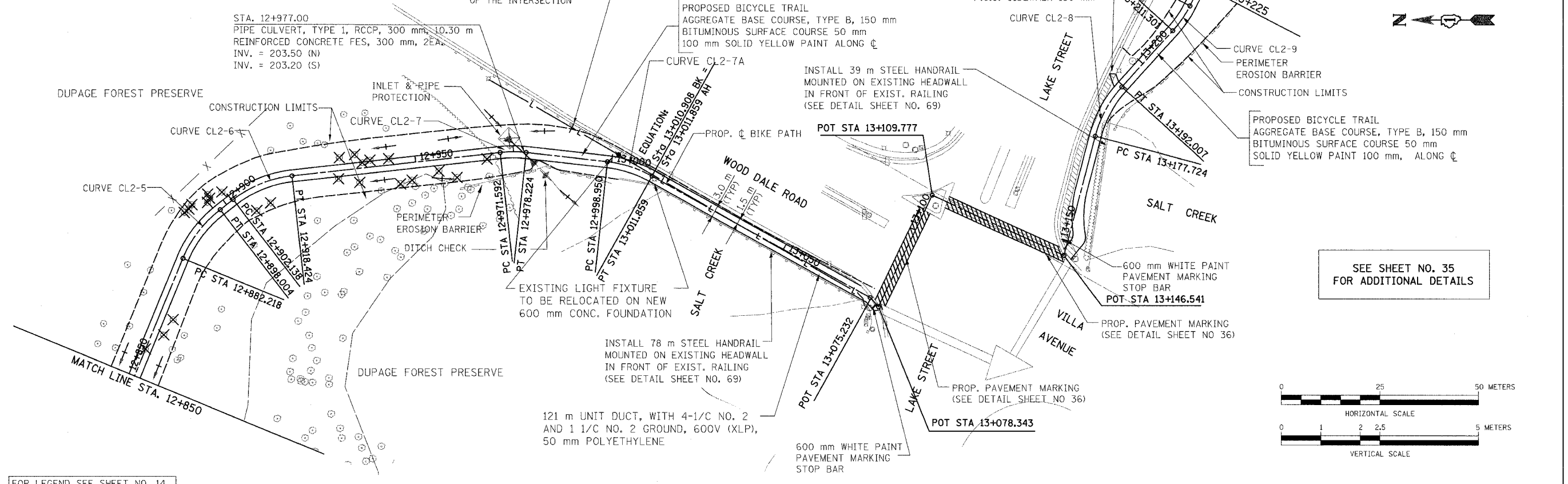


**PROP. CURVE CL2-7A**  
 PI STA = 13+005.009  
 N = 48,528.871  
 E = 5,817.153  
 $\Delta = 22^\circ 50' 18''$  (RT)  
 R = 30.000 m  
 T = 6.060 m  
 L = 11.958 m  
 E = 0.606 m

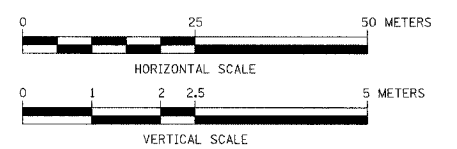
**PROP. CURVE CL2-8**  
 PI STA = 13+185.003  
 N = 48,409.225  
 E = 5,831.298  
 $\Delta = 27^\circ 16' 37''$  (RT)  
 R = 30.000 m  
 T = 7.279 m  
 L = 14.282 m  
 E = 0.870 m

**PROP. CURVE CL2-9**  
 PI STA = 13+215.145  
 N = 48,388.853  
 E = 5,853.886  
 $\Delta = 14^\circ 36' 15''$  (LT)  
 R = 30.000 m  
 T = 3.844 m  
 L = 7.647 m  
 E = 0.245 m

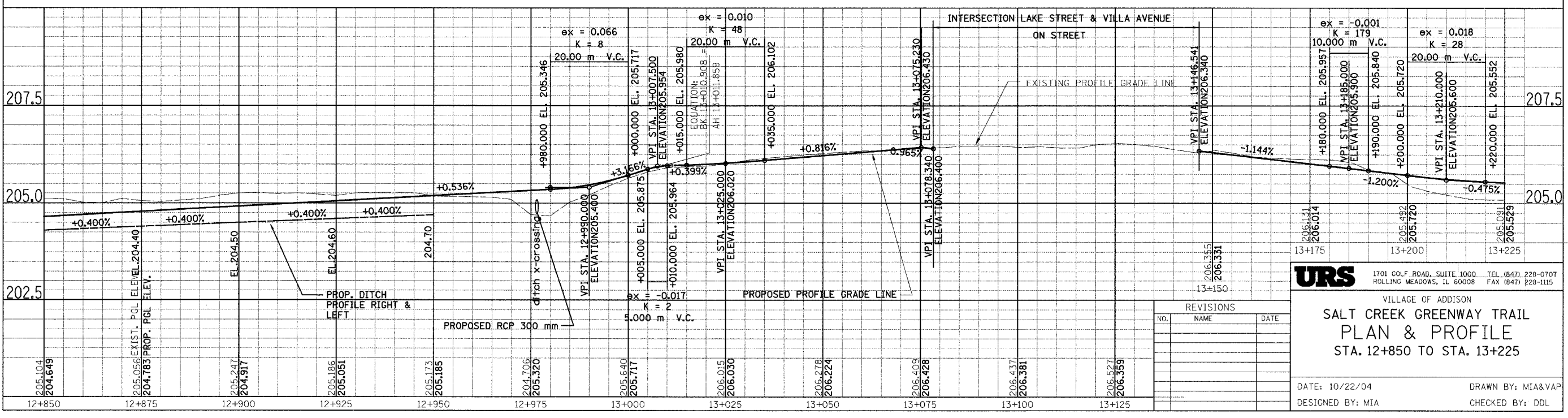
SECTION	COUNTY	TOTAL SHEETS	SHEET NO.
02-00090-00-BT	DUPAGE	117	24
STA. TO STA.			
IDOT PROJECT NO. M-8003(222)			
SALT CREEK GREENWAY TRAIL			
CONTRACT NO. 83713			



SEE SHEET NO. 35 FOR ADDITIONAL DETAILS



FOR LEGEND SEE SHEET NO. 14



REVISIONS		
NO.	NAME	DATE

**URS**  
 1701 GOLF ROAD, SUITE 1000 TEL (847) 228-0707  
 ROLLING MEADOWS, IL 60008 FAX (847) 228-1115

VILLAGE OF ADDISON  
**SALT CREEK GREENWAY TRAIL  
 PLAN & PROFILE  
 STA. 12+850 TO STA. 13+225**

DATE: 10/22/04 DRAWN BY: MIA&VAP  
 DESIGNED BY: MIA CHECKED BY: DDL