

SECTION	COUNTY	TOTAL SHEETS	SHEET NO.
02-00090-00-BT	DUPAGE	117	28
STA.	TO STA.		
IDOT PROJECT NO. M-8003(222)			
SALT CREEK GREENWAY TRAIL			

CONTRACT NO. 83713

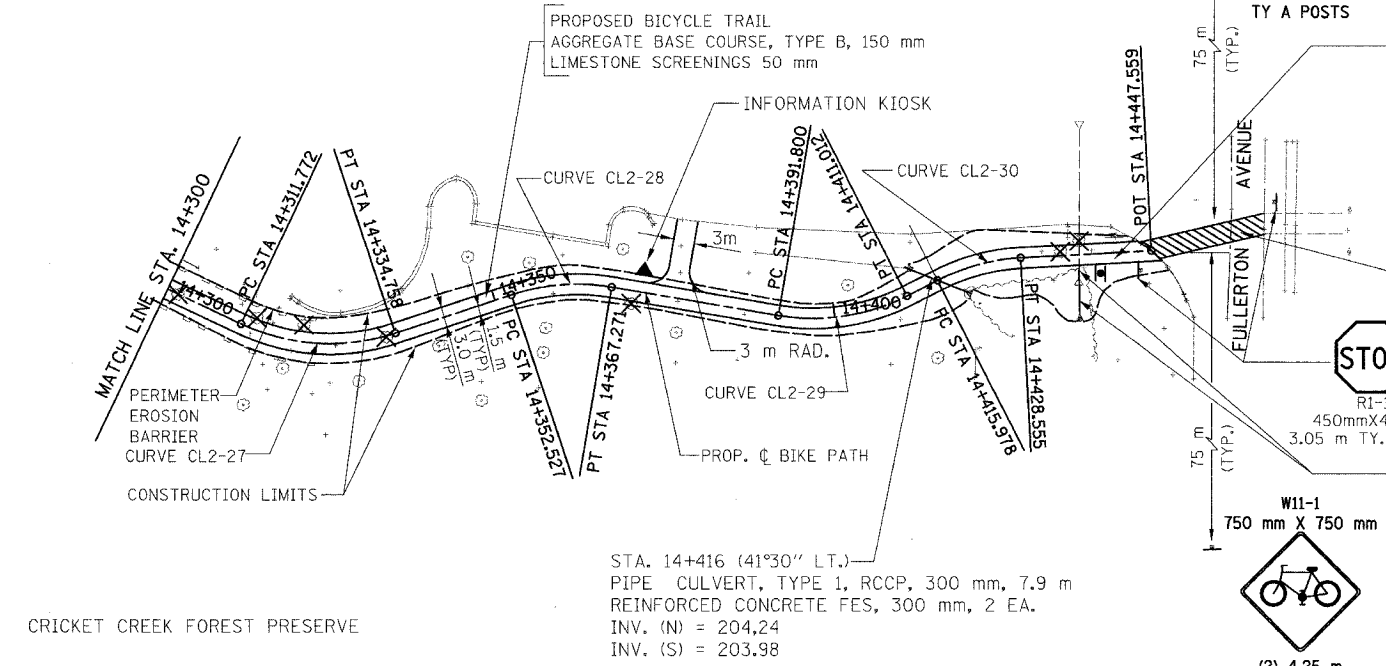
PROP. CURVE CL2-27
 PI STA = 14+323.862
 N = 47,565.026
 E = 6,271.725
 $\Delta = 43^\circ 54' 01''$ (LT)
 R = 30,000 m
 T = 12.090 m
 L = 22.986 m
 E = 2.345 m

PROP. CURVE CL2-29
 PI STA = 14+401.748
 N = 47,488.168
 E = 6,276.526
 $\Delta = 36^\circ 41' 34''$ (LT)
 R = 30,000 m
 T = 9.948 m
 L = 19.212 m
 E = 1.607 m

PROP. CURVE CL2-28
 PI STA = 14+360.050
 N = 47,529.573
 E = 6,283.580
 $\Delta = 28^\circ 09' 32''$ (RT)
 R = 30,000 m
 T = 7.524 m
 L = 14.744 m
 E = 0.929 m

PROP. CURVE CL2-30
 PI STA = 14+422.360
 N = 47,469.196
 E = 6,286.203
 $\Delta = 24^\circ 01' 10''$ (RT)
 R = 30,000 m
 T = 6.382 m
 L = 12.577 m
 E = 0.671 m

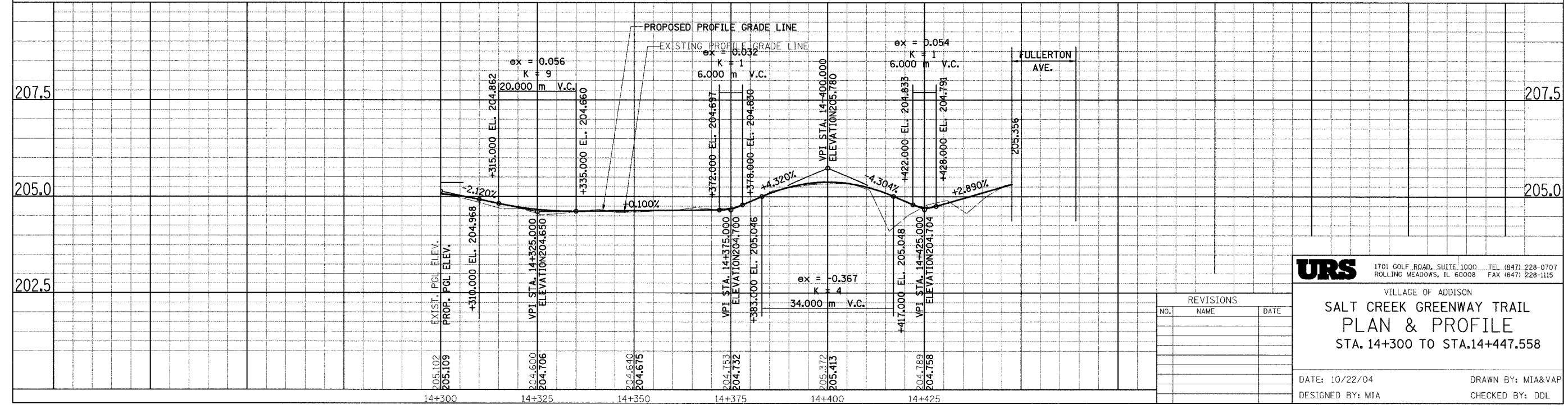
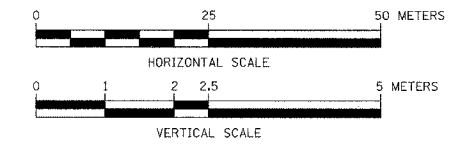
FOR LEGEND SEE SHEET NO. 14



(2) SIGN PANELS TYPE 1 @ STA. 14+439 WITH (1) ALUMINUM SIGN POST, SPECIAL (SEE DETAIL)



STA. 14+437
 REMOVE EXIST. CONCRETE END SECTION
 EXTEND EXIST. 450 mm RCCP CULVERT (4.5 m)
 PROVIDE NEW REINFORCED CONCRETE FES 450 mm 1EA.
 INV. (E) = 202.856 (EXIST.)
 INV. (W) = 202.780



REVISIONS		
NO.	NAME	DATE

URS 1701 GOLF ROAD, SUITE 1000 TEL (847) 228-0707
 ROLLING MEADOWS, IL 60008 FAX (847) 228-1115

VILLAGE OF ADDISON
SALT CREEK GREENWAY TRAIL
PLAN & PROFILE
 STA. 14+300 TO STA. 14+447.558

DATE: 10/22/04 DRAWN BY: MIA&VAP
 DESIGNED BY: MIA CHECKED BY: DDL