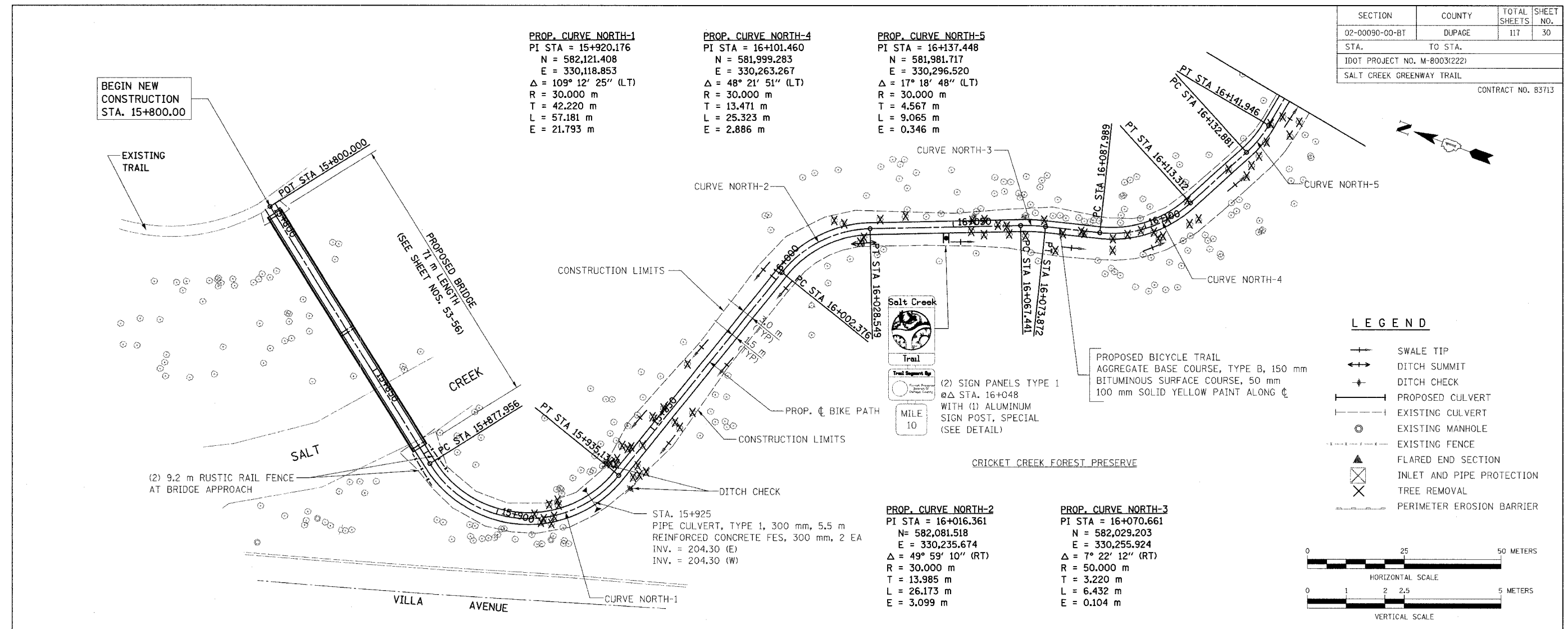


SECTION	COUNTY	TOTAL SHEETS	SHEET NO.
02-00090-00-BT	DUPAGE	117	30
STA. TO STA.			
IDOT PROJECT NO. M-8003(222)			
SALT CREEK GREENWAY TRAIL			
CONTRACT NO. 83713			



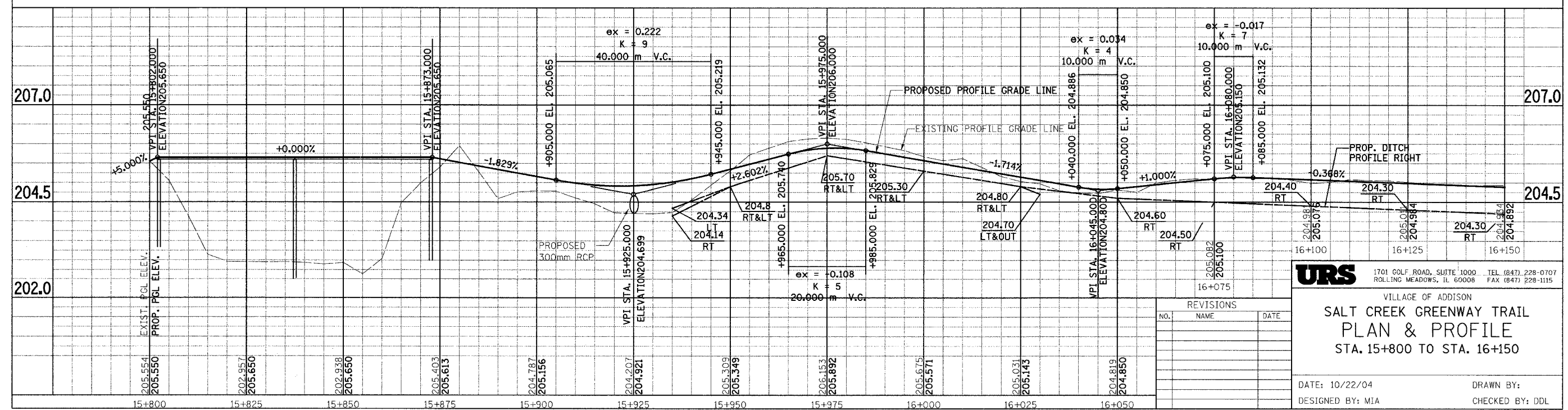
**PROP. CURVE NORTH-1**  
 PI STA = 15+920.176  
 N = 582,121.408  
 E = 330,118.853  
 $\Delta = 109^\circ 12' 25''$  (LT)  
 R = 30.000 m  
 T = 42.220 m  
 L = 57.181 m  
 E = 21.793 m

**PROP. CURVE NORTH-4**  
 PI STA = 16+101.460  
 N = 581,999.283  
 E = 330,263.267  
 $\Delta = 48^\circ 21' 51''$  (LT)  
 R = 30.000 m  
 T = 13.471 m  
 L = 25.323 m  
 E = 2.886 m

**PROP. CURVE NORTH-5**  
 PI STA = 16+137.448  
 N = 581,981.717  
 E = 330,296.520  
 $\Delta = 17^\circ 18' 48''$  (LT)  
 R = 30.000 m  
 T = 4.567 m  
 L = 9.065 m  
 E = 0.346 m

**PROP. CURVE NORTH-2**  
 PI STA = 16+016.361  
 N = 582,081.518  
 E = 330,235.674  
 $\Delta = 49^\circ 59' 10''$  (RT)  
 R = 30.000 m  
 T = 13.985 m  
 L = 26.173 m  
 E = 3.099 m

**PROP. CURVE NORTH-3**  
 PI STA = 16+070.661  
 N = 582,029.203  
 E = 330,255.924  
 $\Delta = 7^\circ 22' 12''$  (RT)  
 R = 50.000 m  
 T = 3.220 m  
 L = 6.432 m  
 E = 0.104 m



**URS** 1701 GOLF ROAD, SUITE 1000 TEL (847) 228-0707  
 ROLLING MEADOWS, IL 60008 FAX (847) 228-1115

VILLAGE OF ADDISON  
**SALT CREEK GREENWAY TRAIL  
 PLAN & PROFILE  
 STA. 15+800 TO STA. 16+150**

DATE: 10/22/04 DRAWN BY:  
 DESIGNED BY: MIA CHECKED BY: DDL