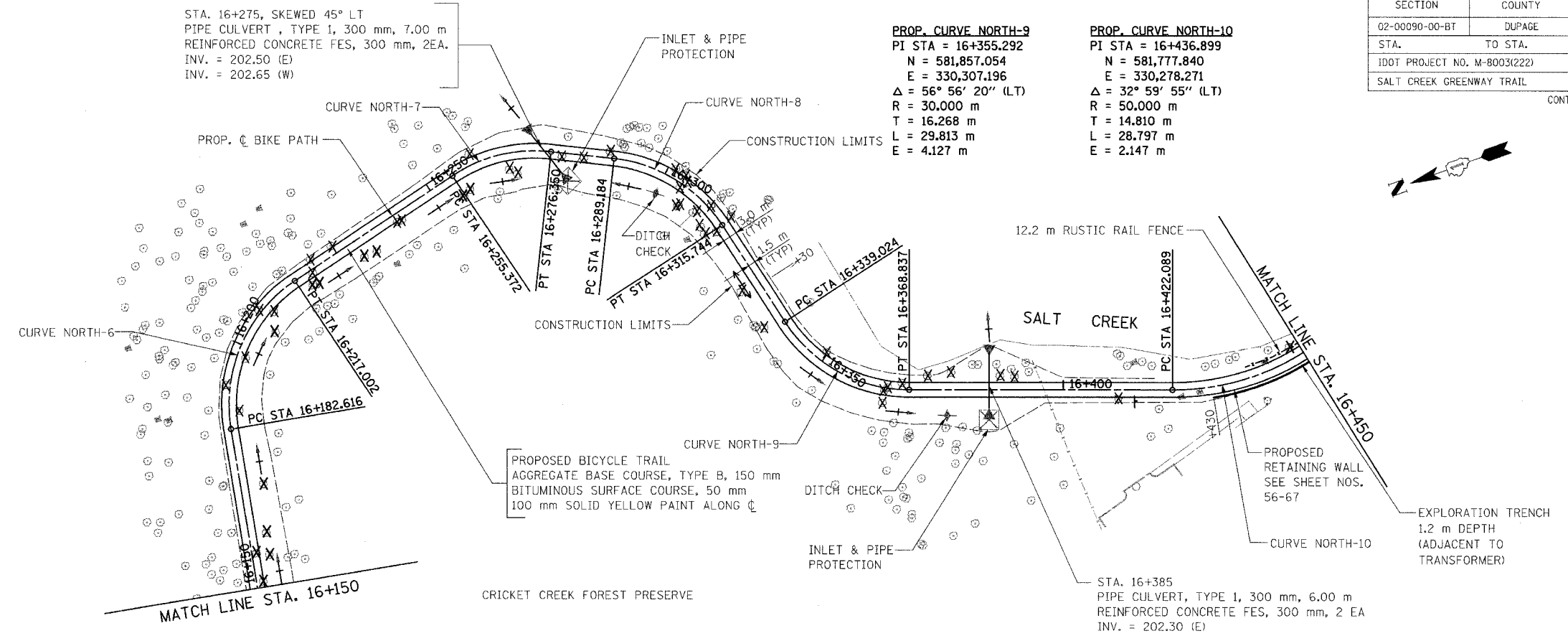


SECTION	COUNTY	TOTAL SHEETS	SHEET NO.
02-00090-00-BT	DUPAGE	117	31
STA.	TO STA.		
IDOT PROJECT NO. M-8003(222)			
SALT CREEK GREENWAY TRAIL			
CONTRACT NO. 83713			



STA. 16+275, SKEWED 45° LT
PIPE CULVERT, TYPE 1, 300 mm, 7.00 m
REINFORCED CONCRETE FES, 300 mm, 2EA.
INV. = 202.50 (E)
INV. = 202.65 (W)

PROP. CURVE NORTH-9
PI STA = 16+355.292
N = 581,857.054
E = 330,307.196
Δ = 56° 56' 20" (LT)
R = 30.000 m
T = 16.268 m
L = 29.813 m
E = 4.127 m

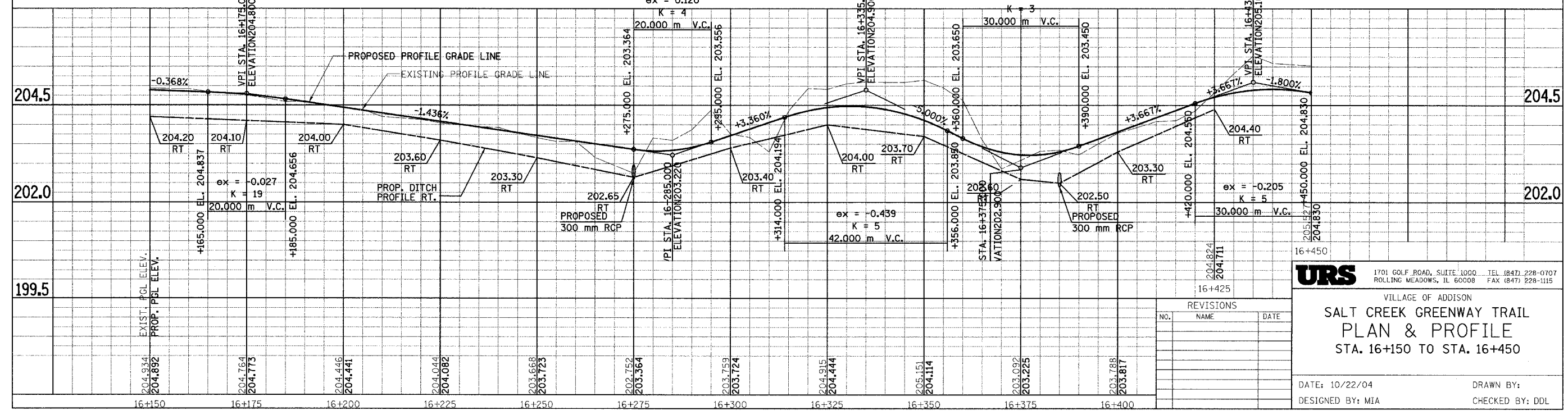
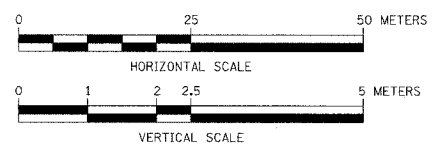
PROP. CURVE NORTH-10
PI STA = 16+436.899
N = 581,777.840
E = 330,278.271
Δ = 32° 59' 55" (LT)
R = 50.000 m
T = 14.810 m
L = 28.797 m
E = 2.147 m

PROP. CURVE NORTH-6
PI STA = 16+201.977
N = 581,969.909
E = 330,360.030
Δ = 65° 40' 22" (RT)
R = 30.000 m
T = 19.361 m
L = 34.386 m
E = 5.705 m

PROP. CURVE NORTH-7
PI STA = 16+266.310
N = 581,903.221
E = 330,376.403
Δ = 40° 03' 58" (RT)
R = 30.000 m
T = 10.939 m
L = 20.979 m
E = 1.932 m

PROP. CURVE NORTH-8
PI STA = 16+303.405
N = 581,869.151
E = 330,359.586
Δ = 50° 43' 35" (RT)
R = 30.000 m
T = 14.221 m
L = 26.560 m
E = 3.200 m

FOR LEGEND SEE SHEET NO. 30



URS 1701 GOLF ROAD, SUITE 1000 TEL (847) 228-0707
ROLLING MEADOWS, IL 60008 FAX (847) 228-1115

VILLAGE OF ADDISON
**SALT CREEK GREENWAY TRAIL
PLAN & PROFILE
STA. 16+150 TO STA. 16+450**

REVISIONS		
NO.	NAME	DATE

DATE: 10/22/04
DESIGNED BY: MIA
DRAWN BY:
CHECKED BY: DDL