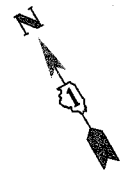


SECTION	COUNTY	TOTAL SHEETS	SHEET NO.
02-00090-00-BT	DUPAGE	117	35
STA.	TO STA.		
IDOT PROJECT NO. M-8003(222)			
SALT CREEK GREENWAY TRAIL			

CONTRACT NO. 83713



SIGN PANELS TYPE 1 WITH ALUMINUM SIGN POST, SPECIAL (SEE DETAIL)



3 ACER X FREEMANII AUTUMN BLAZE (8 m O.C.)

12.2 m RUSTIC RAIL FENCE

PROPOSED BICYCLE TRAIL
AGGREGATE BASE COURSE, TYPE B, 100 mm
PCC SIDEWALK 150 mm
100 mm SOLID YELLOW LINE ALONG C

SIGN PANELS TYPE 1 WITH ALUMINUM SIGN POST, SPECIAL (SEE DETAIL)



3 ACER X FREEMANII AUTUMN BLAZE (8 m O.C.)

SIGN PANELS TYPE 1 MOUNTED ON SIGNAL POST (SEE DETAIL)



END BIT. PATH
BEGIN P.C.C. PATH

EXISTING PAVER BRICKS

REMOVE EXISTING SHRUBS (INCIDENTAL TO CLEARING)
EXISTING SIDEWALK TO BE REMOVED

WOOD DALE ROAD

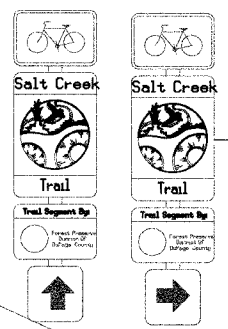
SALT CREEK

12.2 m RUSTIC RAIL FENCE

3 QUERCUS MACROCARPA (8 m O.C.)

PROPOSED PAVER BRICKS BETWEEN PROPOSED TRAIL AND EXISTING PAVER BRICKS (MATCH EXISTING PATTERN)
34 COTONEASTER APICULATIS (CRANBERRY COTONEASTER) AT 1 m O.C.

(2) SIGN PANELS TYPE 1 WITH (1) ALUMINUM SIGN POST, SPECIAL (SEE DETAIL)



ROUTE TRAIL AROUND EXISTING LIGHT

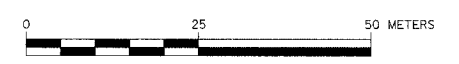
BEGIN P.C.C. PATH

SIGN PANELS TYPE 1 MOUNTED ON SIGNAL POST (SEE DETAIL)



VILLA AVENUE

LAKE STREET



URS
HORIZONTAL SCALE
1701 GOLF ROAD, SUITE 1000 TEL (847) 228-0707
ROLLING MEADOWS, IL 60008 FAX (847) 228-1115

VILLAGE OF ADDISON
SALT CREEK GREENWAY TRAIL

LANDSCAPE PLAN

DATE: 10/22/04
DESIGNED BY: MIA

DRAWN BY: MIA&VP
CHECKED BY: DDL

REVISIONS		
NO.	NAME	DATE