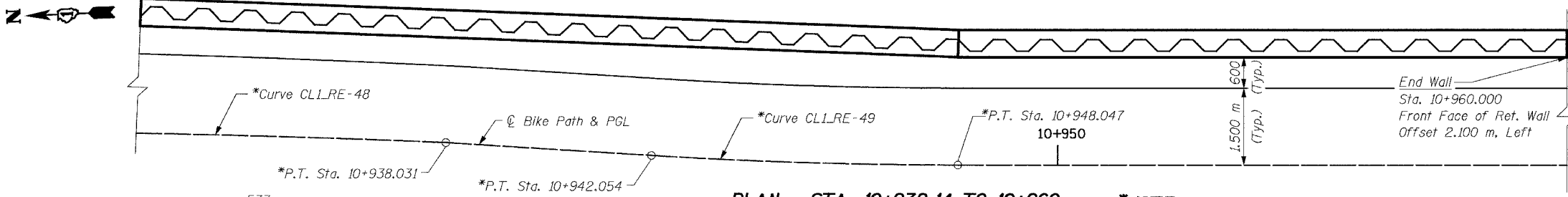
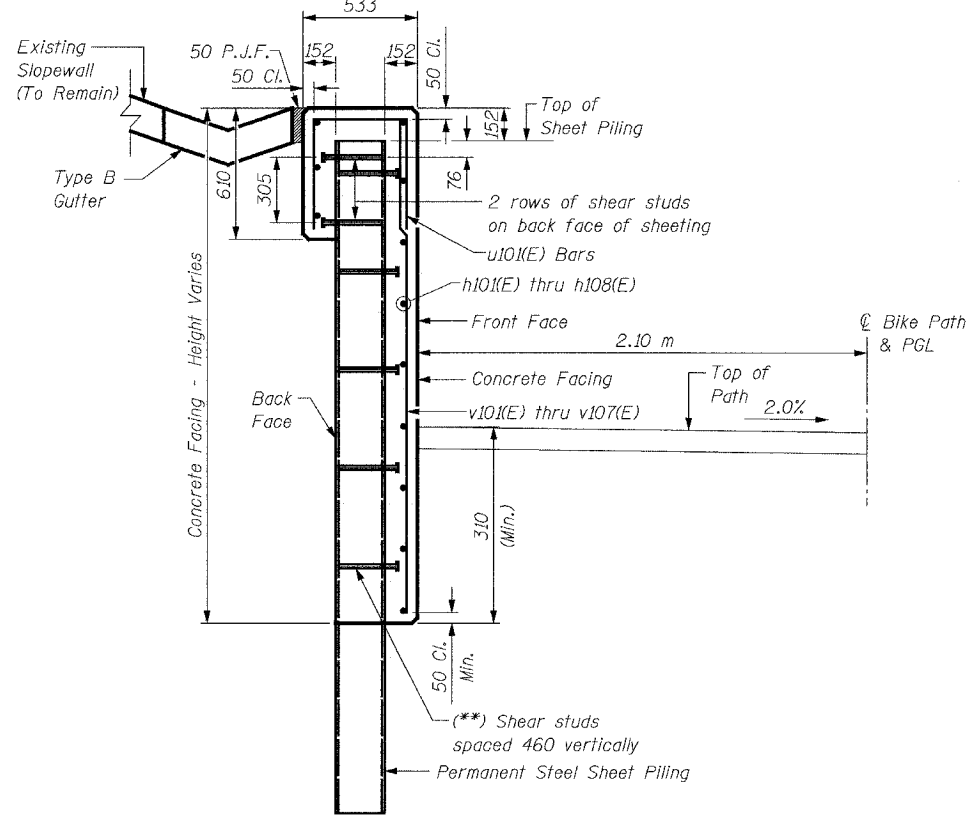


**ELEVATION - STA. 10+932.14 TO 10+960**

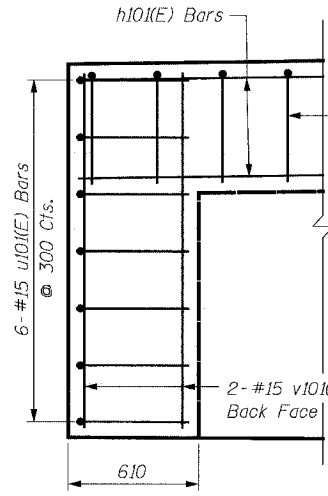


**PLAN - STA. 10+932.14 TO 10+960**

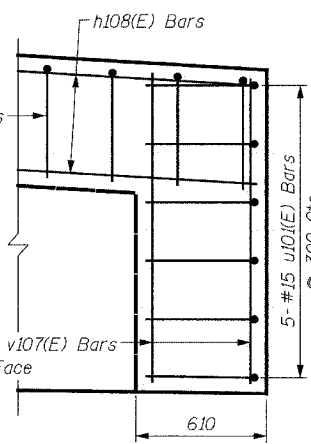
(Reinforcement Omitted for Clarity)



**TYPICAL SECTION THRU WALL**



**END CAP WALL REINFORCEMENT (North End)**



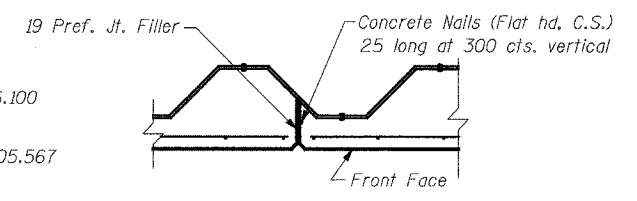
**END CAP WALL REINFORCEMENT (South End)**

**\*NOTE:**

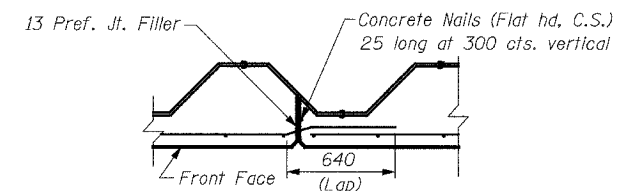
For horizontal curve and alignment information, see Plan & Profile drawings.

**(\*\*)NOTE:**

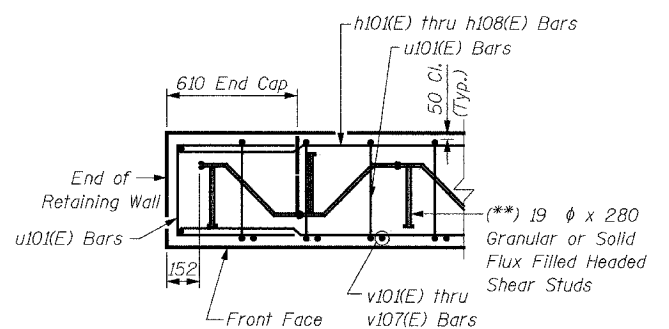
Shear studs shall be 19 dia. x 280 Granular or Solid Flux Filled Headed Studs conforming to 505.08 (m) of the Standard Specifications automatically end welded, in the field to Sheet Piling. The cost of the studs is included in the cost of PERMANENT STEEL SHEET PILING.



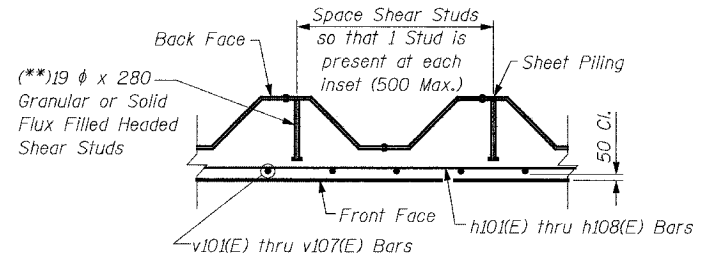
**EXPANSION JOINT DETAIL**



**CONSTRUCTION JOINT DETAIL**



**SECTION THRU CAP**



**TYPICAL SECTION THRU WALL**

**NOTES:**

For Bill of Material and Notes, see Sheet S4.

SHEET S5 of S28

REVISIONS		NAME	DATE	<p><b>URS</b> 1701 GOLF ROAD, SUITE 1000 TEL (847) 228-0707                  ROLLING MEADOWS, IL 60008 FAX (847) 228-1115</p>
NO.	DESCRIPTION			
				<p>VILLAGE OF ADDISON                  SALT CREEK GREENWAY TRAIL                  RET. WALL, STA. 10+880 TO 10+960                  PLAN, ELEVATION AND DETAILS</p>
				<p>DATE: 11/03/04 DRAWN BY: MDS                  DESIGNED BY: MDS CHECKED BY: GAT</p>