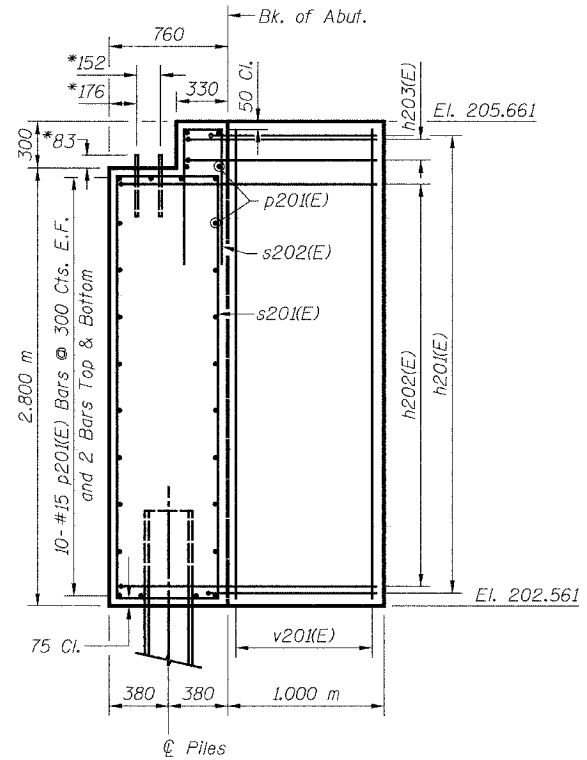


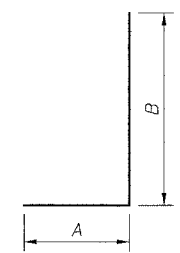
ELEVATION
(East Abutment)



SIDE VIEW

*Anchor bolt size and locations shall be checked against the Bridge Fabricator's requirements prior to setting them.

Bar	A	B
h201(E)	0.890 m	1.000 m
h202(E)	0.890 m	1.660 m
h203(E)	0.890 m	1.230 m



BAR h201(E) THRU h203(E)

BILL OF MATERIAL

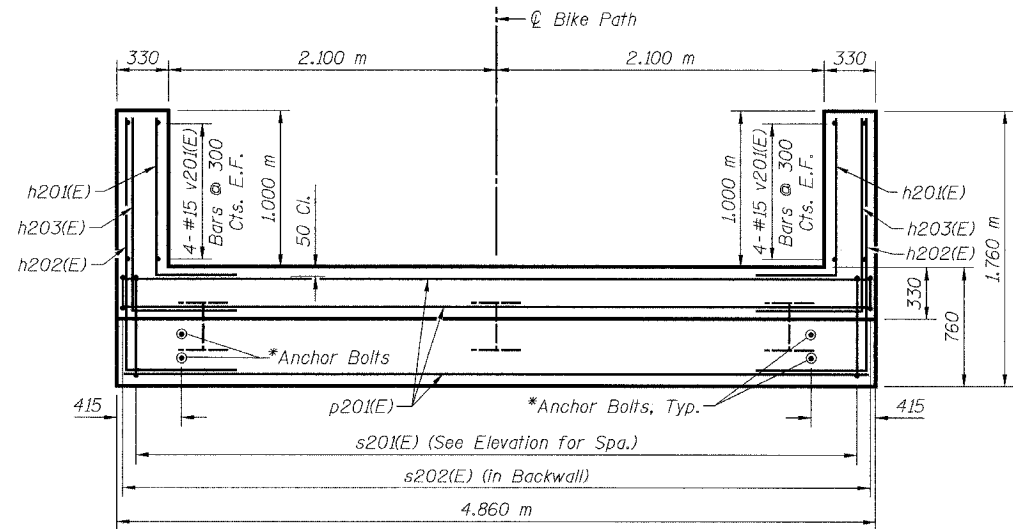
Bar	No.	Size	Length	Shape
h201(E)	22	#15	1.89 m	┌───┐
h202(E)	20	#15	2.55 m	┌───┐
h203(E)	4	#15	2.12 m	┌───┐
p201(E)	28	#15	4.76 m	───
s201(E)	14	#15	6.94 m	┌───┐
s202(E)	17	#15	2.53 m	┌───┐
v201(E)	16	#15	2.97 m	───
Concrete Structures			Cu. M	12.9
Reinforcement Bars, Epoxy Coated			kg	670
Furnishing Steel Piles HP310x79			Meter	57
Driving Steel Piles			Meter	57
Metal Shoes			Each	3
Structure Excavation			Cu. M	7.6

LEGEND

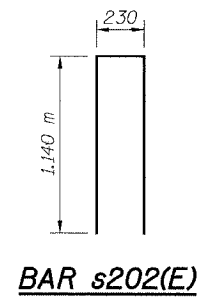
E.F. = Each Face

MIN. BAR LAP

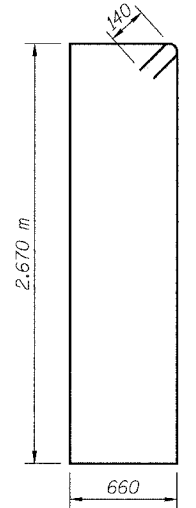
#15 = 890



PLAN
(East Abutment)



BAR s202(E)



BAR s201(E)

PILE DATA:

Type: HP310x79
Capacity: Driven to Refusal
Est. Length: 19.0 m
No. Required: 3

NOTES:

- Space reinforcement in cap to miss anchor bolts.
- All edges shall have standard 20 mm chamfers except as noted.
- For Anchor Bolt Details, see Sheet S27.
- There shall be no splicing of longitudinal bars. Bars shall be ordered full length.
- Bars designated (E) shall be epoxy coated.

SHEET S10 of S28

REVISIONS		NAME	DATE

URS

1701 GOLF ROAD, SUITE 1000
ROLLING MEADOWS, IL 60008

TEL (847) 228-0707
FAX (847) 228-1115

VILLAGE OF ADDISON

SALT CREEK GREENWAY TRAIL

PEDESTRIAN BRIDGE, STA. 12+535.5

EAST ABUTMENT DETAILS

DATE: 11/03/04

DESIGNED BY: MDS

DRAWN BY: MDS

CHECKED BY: GAT