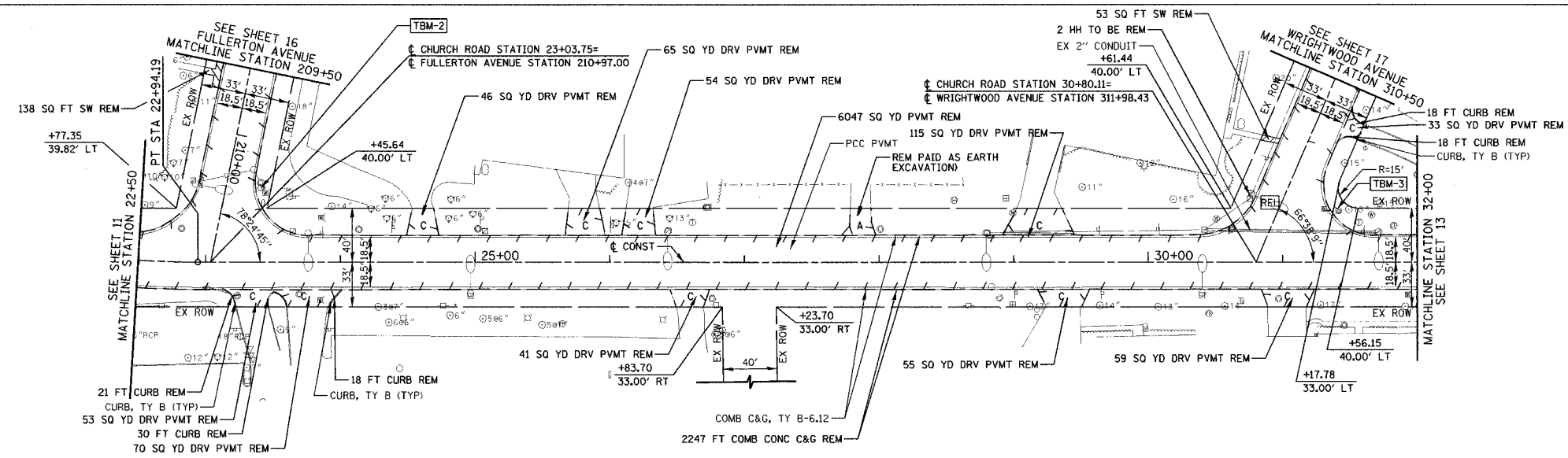


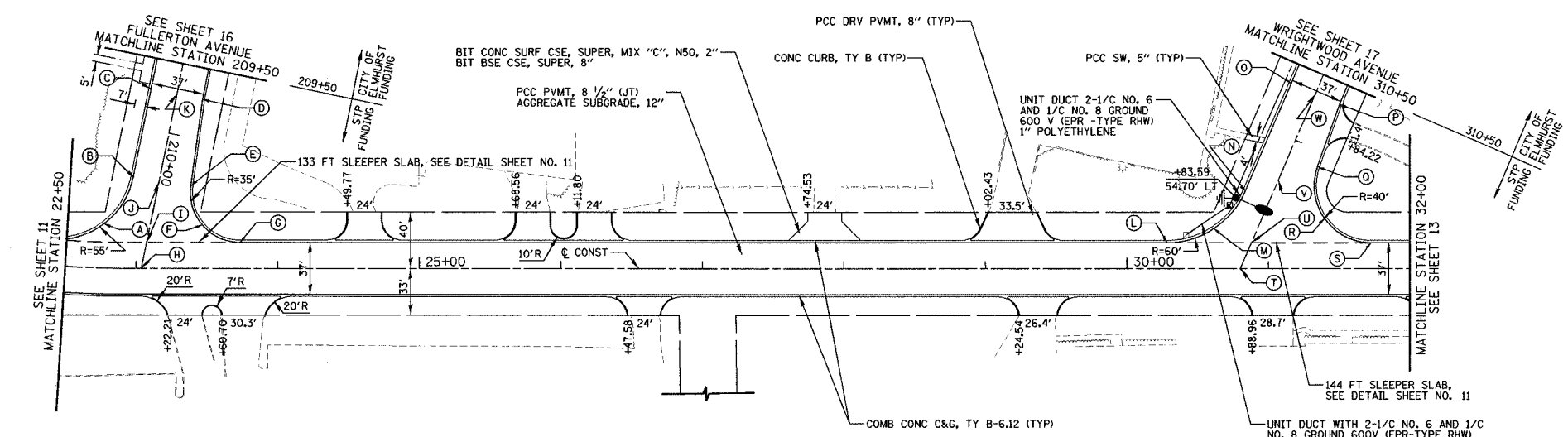
FAU	SECTION	COUNTY	TOTAL SHEETS	SHEET NO.
2667	02-00165-00-RP	DUPAGE	87	12
STA.	22+50	TO STA.	32+00	
FED. ROAD DIST. NO. 7 ILLINOIS FED. AID PROJECT				
CONTRACT NO. 83768				

TBM-2 "X" IN NE BOLT OF FH AT THE NW CORNER OF CHURCH ROAD AND FULLERTON AVENUE. STA 23+41.5, 55.2' LT, EL 698.90

TBM-3 "X" IN SE BOLT OF FH AT THE NW CORNER OF CHURCH ROAD AND WRIGHTWOOD AVENUE. STA 31+41.6, 38.1' LT, EL 699.72



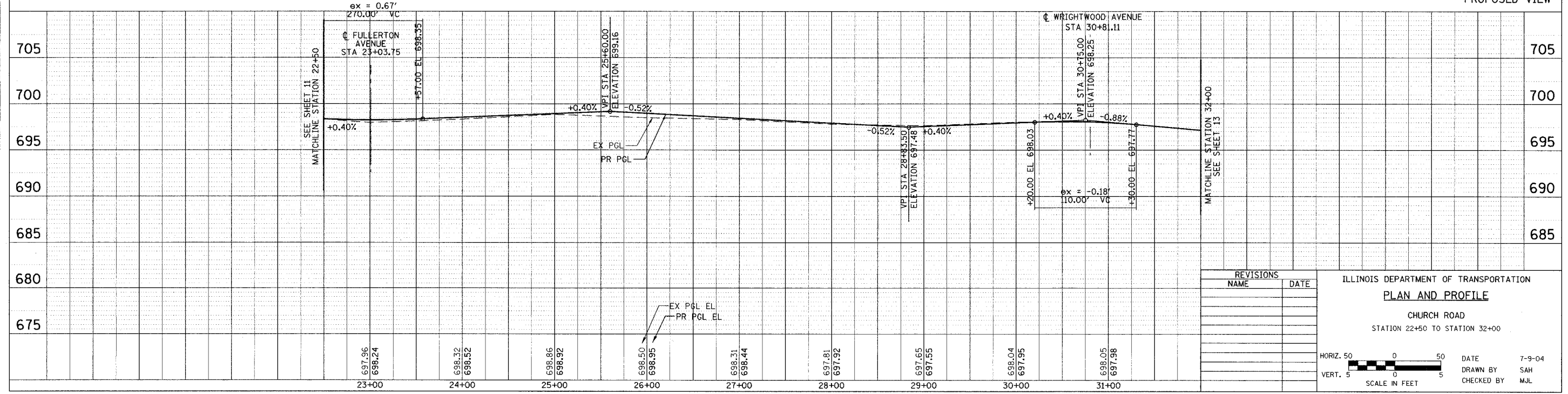
EXISTING VIEW



NOTE: DRIVEWAY RADII ARE 15' UNLESS OTHERWISE NOTED.

STA.	O/S	ELEV.
A	+76.54	31.29' RT 697.68
B	+35.10	18.50' RT 697.33
C	+71.76	18.50' RT 697.16
D	+71.76	18.50' LT 697.16
E	+32.93	22.58' LT 697.49
F	+47.05	30.48' LT 697.67
G	+73.42	18.50' LT 697.85
H	+03.75	0.00' RT 698.24
I	+07.54	18.50' LT 697.87
J	+34.12	0.00' RT 697.69
K	+71.76	0.00' RT 697.53

STA.	O/S	ELEV.
L	+28.51	18.50' LT 697.69
M	+61.46	28.36' LT 697.48
N	+46.83	18.50' RT 697.27
O	+64.47	18.50' RT 696.94
P	+64.47	18.50' LT 696.94
Q	+10.80	21.59' LT 697.12
R	+39.69	35.43' LT 697.28
S	+72.37	18.50' LT 697.03
T	+80.11	0.00' RT 698.06
U	+88.08	18.50' LT 697.76
V	+30.20	0.00' RT 697.31
W	+64.47	0.00' RT 697.17



PROPOSED VIEW

DATE: \_\_\_\_\_ BY: \_\_\_\_\_  
 SURVEYED: \_\_\_\_\_  
 PLAN: \_\_\_\_\_  
 NOTE BOOK: \_\_\_\_\_  
 NO. \_\_\_\_\_

DATE: \_\_\_\_\_ BY: \_\_\_\_\_  
 PROFILE: \_\_\_\_\_  
 NOTE BOOK: \_\_\_\_\_  
 NO. \_\_\_\_\_



REVISIONS	NAME	DATE

ILLINOIS DEPARTMENT OF TRANSPORTATION  
**PLAN AND PROFILE**  
 CHURCH ROAD  
 STATION 22+50 TO STATION 32+00

HORIZ. 50' 0 50'  
 VERT. 5' 0 5'  
 SCALE IN FEET

DATE: 7-9-04  
 DRAWN BY: SAH  
 CHECKED BY: MJL