

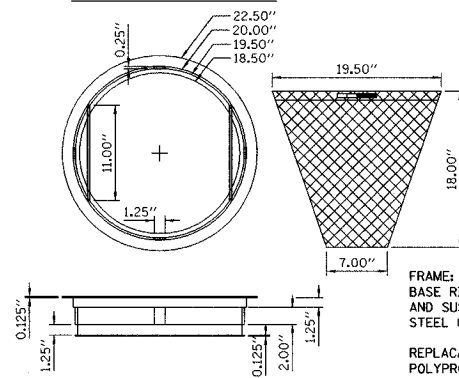
LEGEND

SYMBOL	DESCRIPTION
	CONSTRUCTION WORK ZONE
	TYPE II BARRICADE WITH STEADY BURN LIGHTS @ 50' C. TO C. (TYP) - 25' C. TO C. IN TAPERS, CURVES, AND RADII
	TYPE III BARRICADE
	SIGN ON PORTABLE OR PERMANENT SUPPORT
	VERTICAL PANELS WITH STEADY BURNING LIGHT
	FLASHING LIGHT
	DIRECTION OF TRAFFIC FLOW
	ARROW BOARD
	INLET AND PIPE PROTECTION (4 BALES EACH, SEE STANDARD 280001)
	PERIMETER EROSION BARRIER (SILT FENCE, SEE STANDARD 280001)
	TEMPORARY DITCH CHECK (URETHANE FOAM OR ROLLED EXCELSIOR, SEE STANDARD 280001)

TEMPORARY EROSION CONTROL NOTES

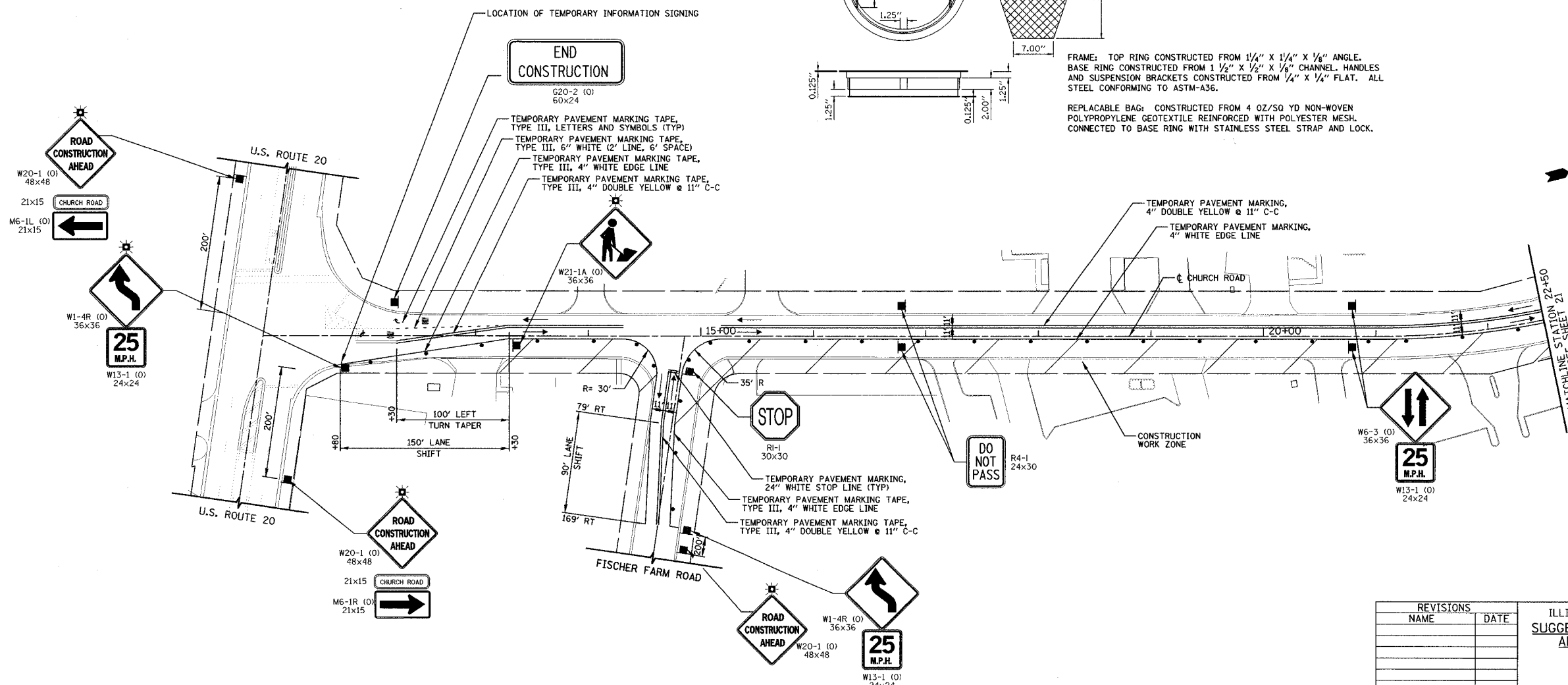
1. THE CONTRACTOR WILL BE REQUIRED TO IMPLEMENT AND MAINTAIN EROSION CONTROL MEASURES IMMEDIATELY AFTER STRIPPING OF EXISTING VEGETATION.
2. THE QUANTITY SHOWN FOR TEMPORARY DITCH CHECKS AND INLET AND PIPE PROTECTION IS SUFFICIENT FOR ONE (1) SET UP AND THREE (3) REPLACEMENTS OVER THE DURATION OF THE CONTRACT. THESE ITEMS ARE MEASURED AS EACH, REGARDLESS OF TYPE OR CONFIGURATION USED.
3. THE CONTRACTOR SHALL SURROUND ALL EARTH STOCKPILES WITH PERIMETER EROSION BARRIER. EROSION CONTROL MEASURES SHALL BE INSPECTED BY THE CONTRACTOR AND ENGINEER WITHIN 24 HOURS OF ANY STORM EXCEEDING 1/2" OF PRECIPITATION.
4. ALL CONSTRUCTION ACTIVITIES SHALL ALSO BE IN ACCORDANCE WITH THE NATIONAL POLLUTANT DISCHARGE ELIMINATION SYSTEM STORM WATER PERMIT.
5. THE CONTRACTOR SHALL TAKE ALL PRECAUTIONS TO PREVENT POLLUTION OF STORM WATER AND SHALL FOLLOW IEPA & IDOT CONSTRUCTION MEMORANDUM NO. 02-60.
6. A QUANTITY OF ONE (1) SEDIMENT CONTROL, DRAINAGE STRUCTURE INLET FILTER AND TWO (2) INLET FILTER CLEANINGS HAVE BEEN PROVIDED FOR EVERY EXISTING AND PROPOSED INLET WITHIN THE PROJECT LIMITS. THE FILTERS SHALL BE INSTALLED PRIOR TO CONSTRUCTION ACTIVITIES.
7. ALL DISTURBED AREAS SHALL BE SODDED AS SOON AS PRACTICAL AFTER CONSTRUCTION ACTIVITIES IN THAT AREA HAVE CONCLUDED. AREAS THAT HAVE BEEN STRIPPED AND WILL NOT RECEIVE PERMANENT LANDSCAPING BEFORE THE END OF FALL SEEDING RESTRICTION SHALL RECEIVE TEMPORARY EROSION CONTROL SEEDING.

SEDIMENT CONTROL, DRAINAGE STRUCTURE INLET FILTER



FRAME: TOP RING CONSTRUCTED FROM 1/4" X 1/4" X 1/8" ANGLE. BASE RING CONSTRUCTED FROM 1 1/2" X 1/2" X 1/4" CHANNEL. HANDLES AND SUSPENSION BRACKETS CONSTRUCTED FROM 1/4" X 1/4" FLAT. ALL STEEL CONFORMING TO ASTM-A36.

REPLACABLE BAG: CONSTRUCTED FROM 4 OZ/SQ YD NON-WOVEN POLYPROPYLENE GEOTEXTILE REINFORCED WITH POLYESTER MESH. CONNECTED TO BASE RING WITH STAINLESS STEEL STRAP AND LOCK.



REVISIONS		NAME	DATE
NO.	DESCRIPTION		

ILLINOIS DEPARTMENT OF TRANSPORTATION
SUGGESTED CONSTRUCTION PROCEDURE
AND MAINTENANCE OF TRAFFIC
STAGE I
CHURCH ROAD
STATION 13+30 TO STATION 22+50

HORIZ. 50 0 50
SCALE IN FEET

DATE 7-9-04
DRAWN BY MJG
CHECKED BY MJL

DATE: _____ BY: _____
 CHECKED: _____
 PLOTTED: _____
 REVISIONS: _____
 NO. _____

DATE: _____ BY: _____
 CHECKED: _____
 PLOTTED: _____
 REVISIONS: _____
 NO. _____

