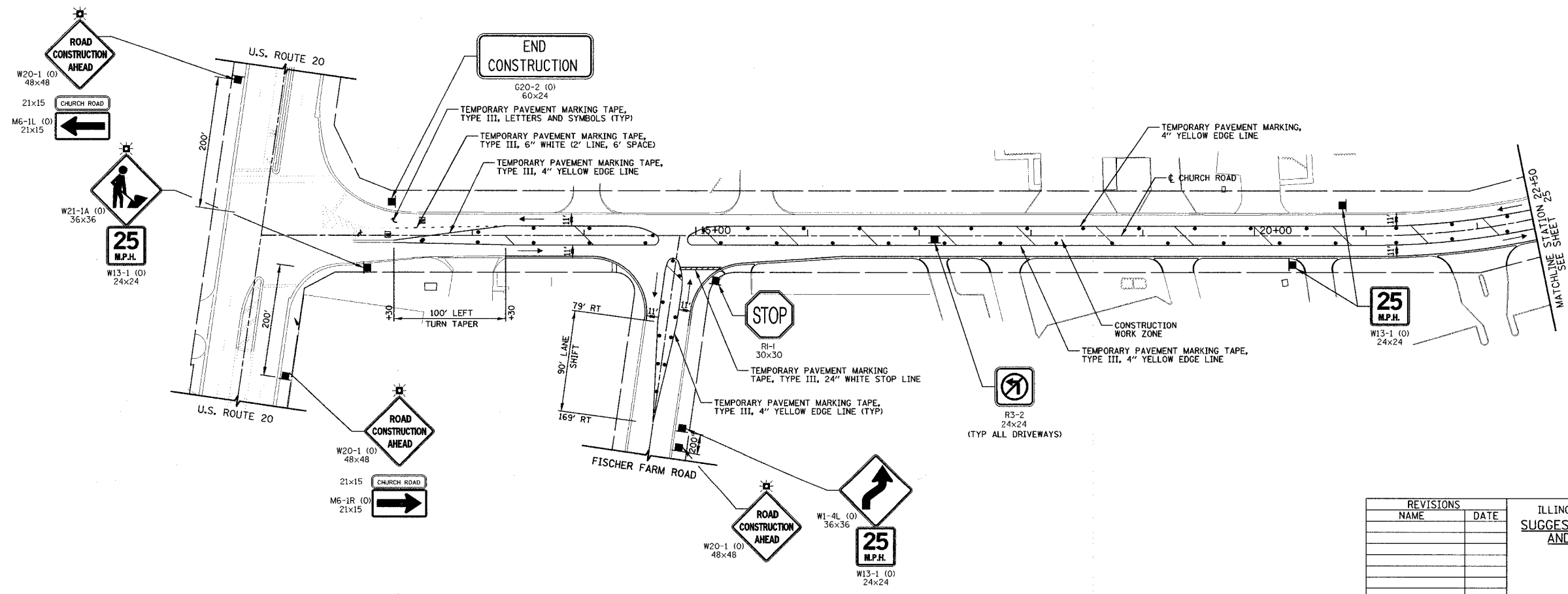


FAU	SECTION	COUNTY	TOTAL SHEETS	SHEET NO.
2667	02-00165-00-RP	DUPAGE	87	24
STA. 13+30		TO STA. 22+50		
FED. ROAD DIST. NO. 7 ILLINOIS FED. AID PROJECT				
CONTRACT NO. 83768				

PLAN	DESIGNED	DATE
	CHECKED	
	NOTED	
	APPROVED	
	DATE	

PROFILE	DESIGNED	DATE
	CHECKED	
	NOTED	
	APPROVED	
	DATE	



REVISIONS	
NAME	DATE

ILLINOIS DEPARTMENT OF TRANSPORTATION  
**SUGGESTED CONSTRUCTION PROCEDURE  
AND MAINTENANCE OF TRAFFIC**  
**STAGE II**  
**CHURCH ROAD**  
STATION 13+30 TO STATION 22+50

HORIZ. 50 0 50  
  
SCALE IN FEET

DATE 7-9-04  
DRAWN BY MJG  
CHECKED BY MJL