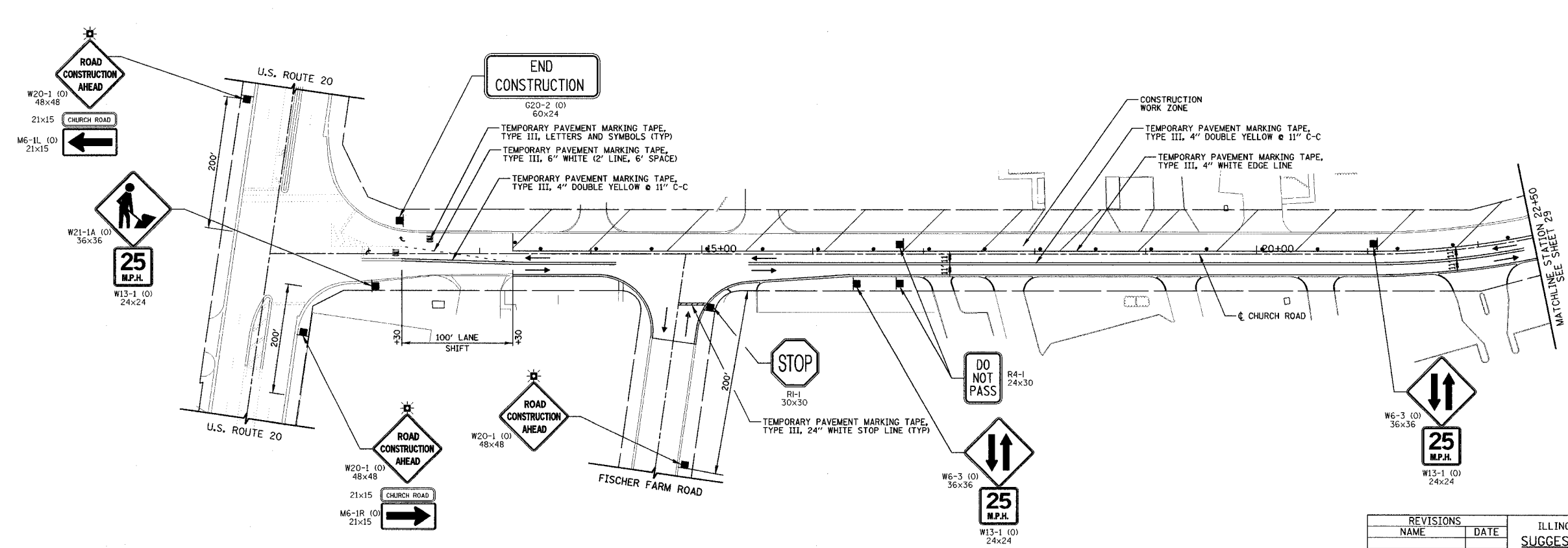


FAU	SECTION	COUNTY	TOTAL SHEETS	SHEET NO.
2667	02-00165-00-RP	DUPAGE	87	28
STA. 13+30		TO STA. 22+50		
FED. ROAD DIST. NO. 7 ILLINOIS FED. AID PROJECT				
CONTRACT NO. 83768				

REVISIONS	DATE
DESIGNED	
PLANNED	
CHECKED	
APPROVED	
NOTE BOOK	
NO.	

REVISIONS	DATE
DESIGNED	
PLANNED	
CHECKED	
APPROVED	
NOTE BOOK	
NO.	



REVISIONS		DATE
NAME		

ILLINOIS DEPARTMENT OF TRANSPORTATION  
**SUGGESTED CONSTRUCTION PROCEDURE AND MAINTENANCE OF TRAFFIC**  
 STAGE III

CHURCH ROAD  
 STATION 13+30 TO STATION 22+50

HORIZ. 50 0 50  
 SCALE IN FEET

DATE 7-9-04  
 DRAWN BY MJG  
 CHECKED BY MJL