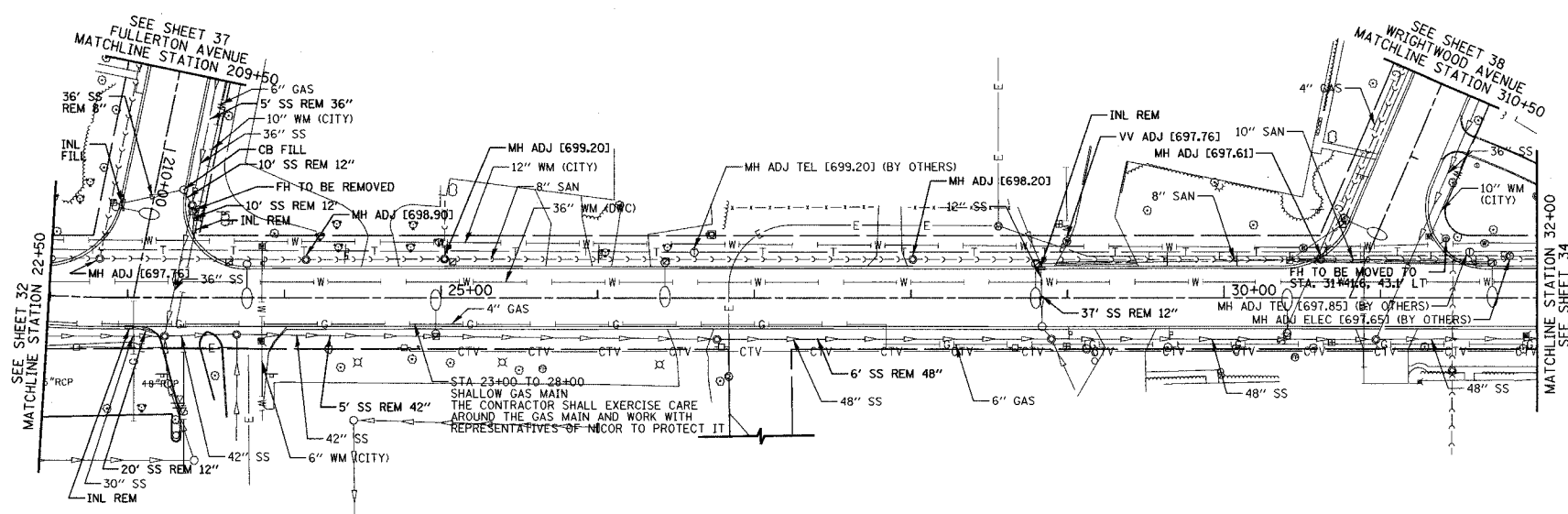
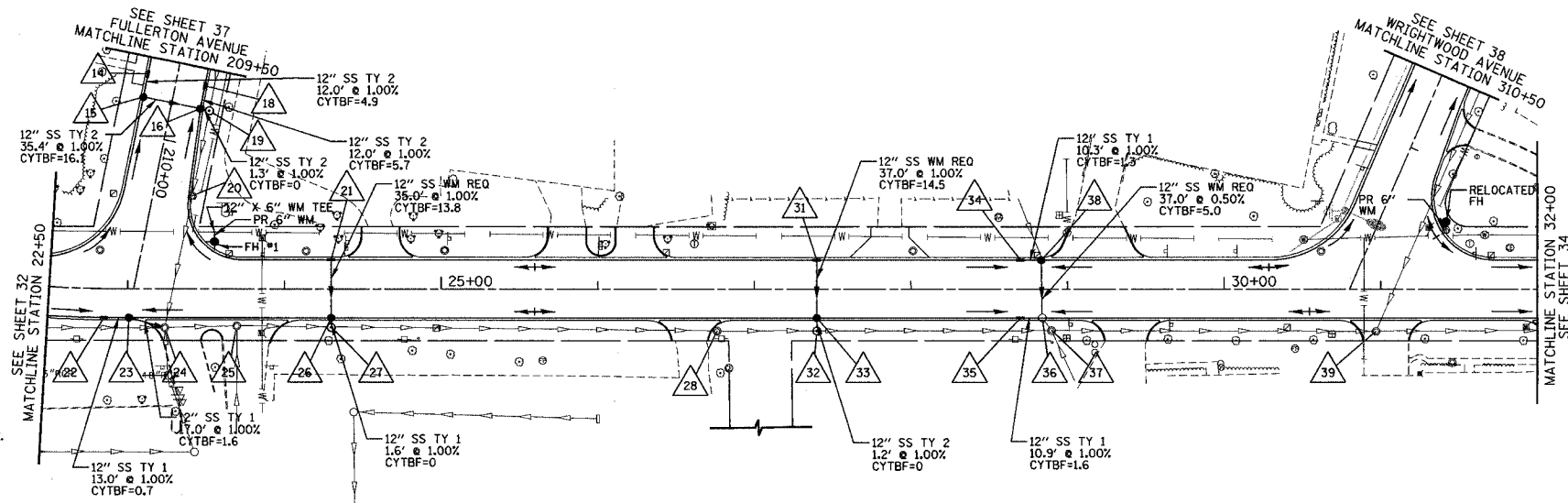


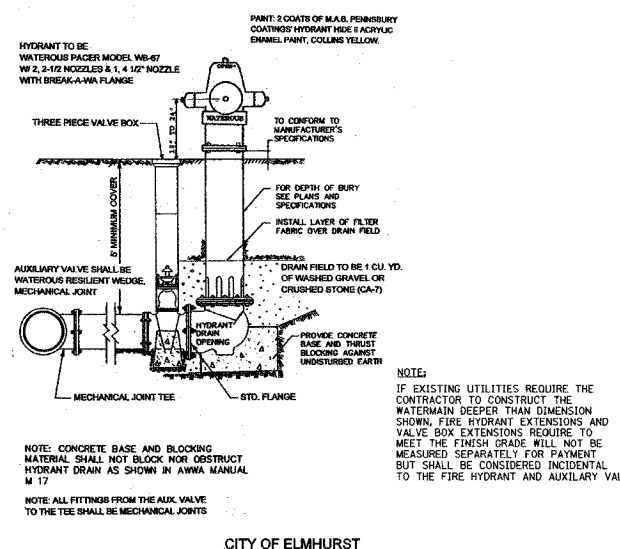
FAU	SECTION	COUNTY	TOTAL SHEETS	SHEET NO.
2667	02-00165-00-RP	DUPAGE	87	33
	STA. 22+50	TO STA. 32+00		
FED. ROAD DIST. NO. 7 ILLINOIS FED. AID PROJECT				
CONTRACT NO. 83768				



EXISTING VIEW



PROPOSED VIEW



HYDRANT TO BE WATERLOUS PATER MODEL WB-47 W/ 2, 2-1/2 NOZZLES & 1, 4 1/2" NOZZLE WITH BREAK-A-WAY FLANGE

THREE PIECE VALVE BOX

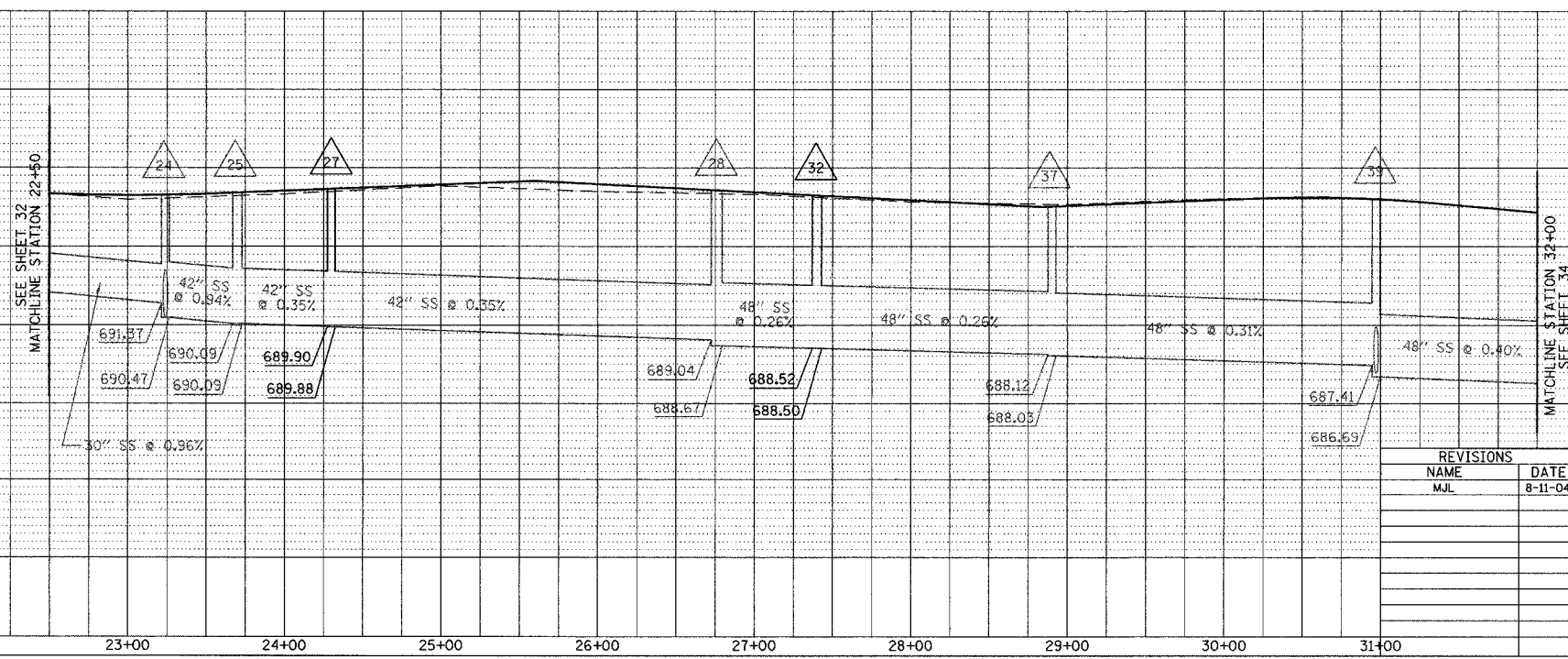
AUXILIARY VALVE SHALL BE WATERLOUS RESILIENT MESH MECHANICAL JOINT

MECHANICAL JOINT TEE

STD. FLANGE

NOTE: CONCRETE BASE AND BLOCKING MATERIAL SHALL NOT BLOCK NOR OBSTRUCT HYDRANT DRAIN AS SHOWN IN AWWA MANUAL M 17

NOTE: ALL FITTINGS FROM THE AUX. VALVE TO THE TEE SHALL BE MECHANICAL JOINTS



REVISIONS	
NAME	DATE
MJL	8-11-04

ILLINOIS DEPARTMENT OF TRANSPORTATION
DRAINAGE AND UTILITIES
CHURCH ROAD
STATION 22+50 TO STATION 32+00

HORIZ. 50
VERT. 5
SCALE IN FEET

DATE 7-9-04
DRAWN BY SAH
CHECKED BY MJL

DATE	BY

PLAN

DATE

BY

REVIEWED

DATE

BY

DESIGNED

DATE

BY

CHECKED

DATE

BY

NOTED

DATE

BY

DATE

BY

DATE	BY

PROFILE

DATE

BY

REVIEWED

DATE

BY

DESIGNED

DATE

BY

CHECKED

DATE

BY

NOTED

DATE

BY

DATE

BY

