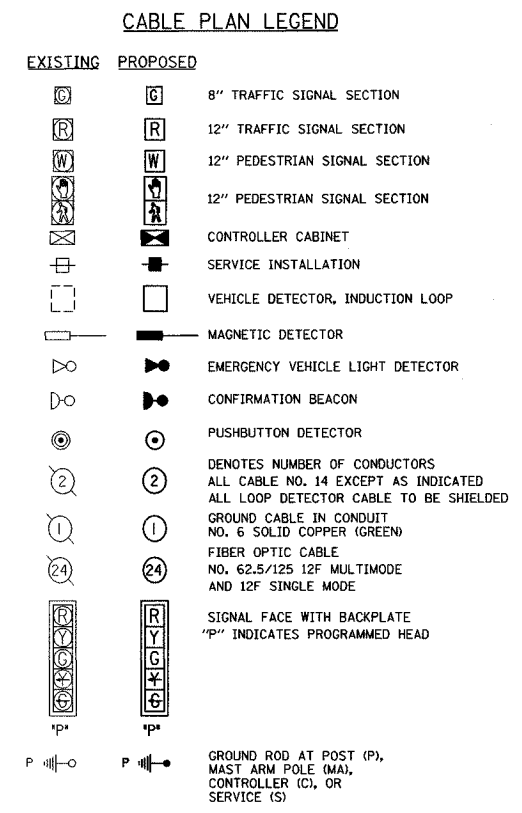
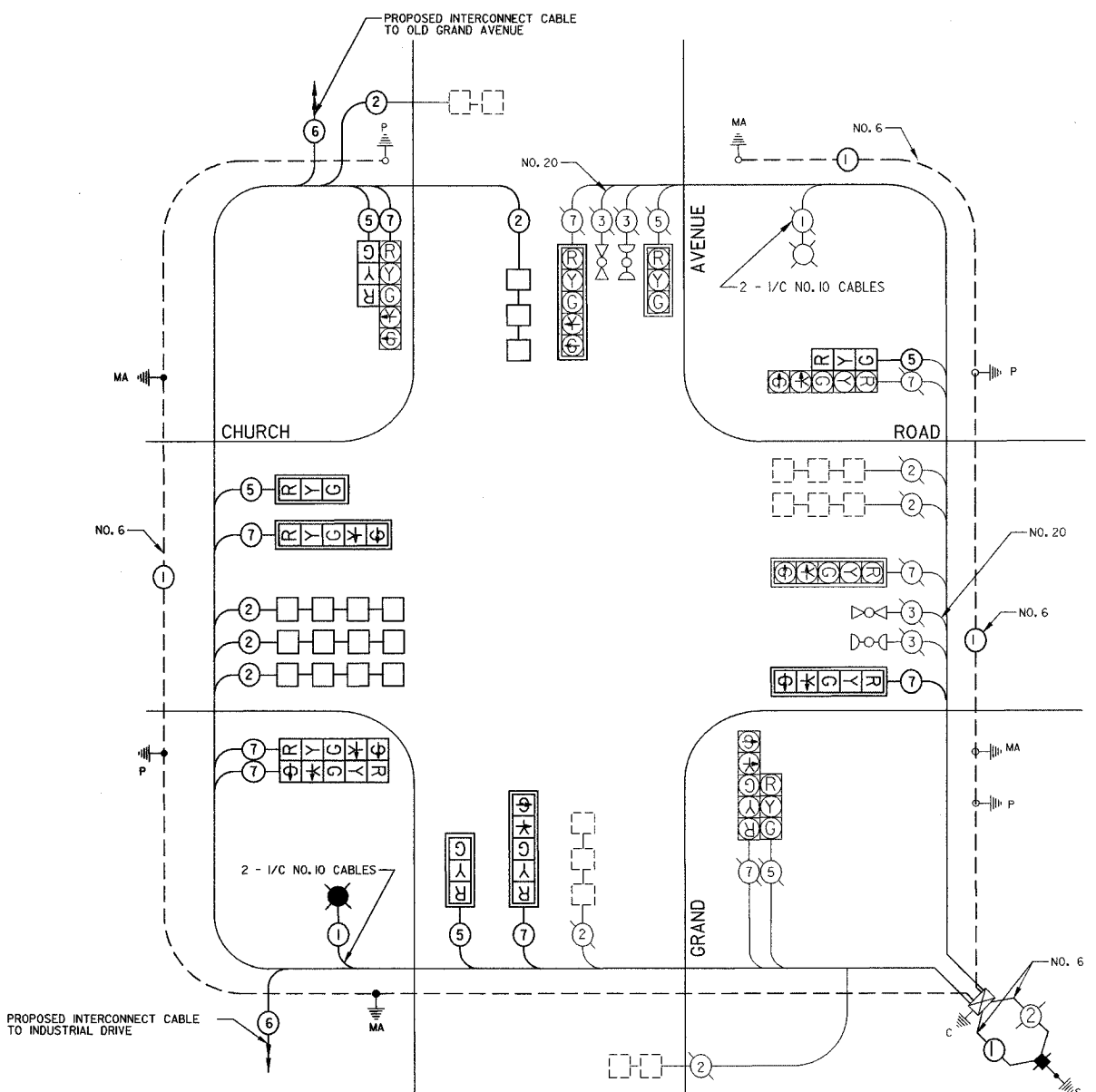
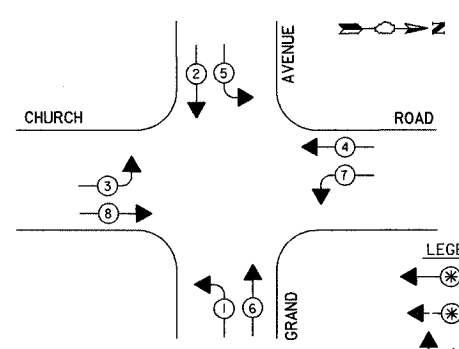


SCHEDULE OF QUANTITIES

QUANTITY	UNIT	ITEM
6	50 FT	RELOCATE SIGN PANEL - TYPE 1
50	FOOT	CONDUIT IN TRENCH, 2 1/2" DIA., GALVANIZED STEEL
35	FOOT	CONDUIT IN TRENCH, 4" DIA., GALVANIZED STEEL
177	FOOT	CONDUIT PUSHED, 4" DIA., GALVANIZED STEEL
1	EACH	HANDHOLE
169	FOOT	TRENCH AND BACKFILL FOR ELECTRICAL WORK
238	FOOT	ELECTRIC CABLE IN CONDUIT, 600V (EPR-TYPE RHW) 1/C NO. 10
1	EACH	LUMINAIRE, SODIUM VAPOR, HORIZONTAL MOUNT, 400 WATT
1020	FOOT	ELECTRIC CABLE IN CONDUIT, SIGNAL NO. 14 5C
1332	FOOT	ELECTRIC CABLE IN CONDUIT, SIGNAL NO. 14 7C
1223	FOOT	ELECTRIC CABLE IN CONDUIT, LEAD-IN, NO. 14 1 PAIR
1	EACH	TRAFFIC SIGNAL POST, 16 FT.
1	EACH	STEEL MAST ARM ASSEMBLY AND POLE, 46 FT.
1	EACH	STEEL COMBINATION MAST ARM ASSEMBLY AND POLE 38 FT.
4	FOOT	CONCRETE FOUNDATION, TYPE A
15	FOOT	CONCRETE FOUNDATION, TYPE E 30-INCH DIAMETER
6	EACH	DRILL EXISTING HANDHOLE
2	EACH	SIGNAL HEAD, 1-FACE, 3-SECTION, BRACKET MOUNTED
2	EACH	SIGNAL HEAD, 1-FACE, 3-SECTION, MAST ARM MOUNTED
3	EACH	SIGNAL HEAD, 1-FACE, 5-SECTION, MAST ARM MOUNTED
1	EACH	SIGNAL HEAD, 2-FACE, 5-SECTION, BRACKET MOUNTED
5	EACH	TRAFFIC SIGNAL BACKPLATE
1	EACH	INDUCTIVE LOOP DETECTOR WITH SYSTEM OUTPUT
287	FOOT	DETECTOR LOOP, TYPE 1
1	EACH	TEMPORARY TRAFFIC SIGNAL INSTALLATION
1	EACH	REMOVE EXISTING TRAFFIC SIGNAL EQUIPMENT
3	EACH	REMOVE EXISTING HANDHOLE
3	EACH	REMOVE EXISTING CONCRETE FOUNDATION
894	FOOT	PREFORMED DETECTOR LOOP
560	FOOT	ELECTRIC CABLE IN CONDUIT, GROUNDING, NO. 6 1C
1	EACH	MODIFY EXISTING CONTROLLER
265	FOOT	REMOVE ELECTRIC CABLE FROM CONDUIT
1	EACH	SERVICE INSTALLATION - POLE MOUNTED
15	FOOT	CONCRETE FOUNDATION, TYPE E 36-INCH DIAMETER

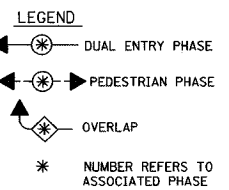
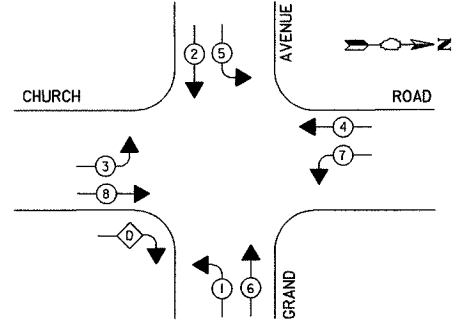


EXISTING CONTROLLER SEQUENCE



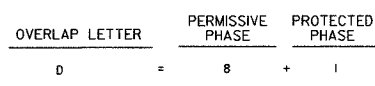
CABLE PLAN NOT TO SCALE

PROPOSED CONTROLLER SEQUENCE



PHASE DESIGNATION DIAGRAM

PHASE DESIGNATION DIAGRAM



I.D.O.T. TRAFFIC SIGNAL INSTALLATION ELECTRICAL SERVICE REQUIREMENTS					TOTAL WATTAGE
TYPE	NO. OF LAMPS	X INCAND.	LED.	X% OPERATION	
(RED)	16	135	17	0.50	1080
(YELLOW)	16	135	25	0.25	540
(GREEN)	16	135	15	0.25	540
ARROW	20	135	12	0.10	270
PED. SIGNAL		90	25	1.00	
CONTROLLER	1	100	100	1.00	100
ILLUM. SIGN		252		0.05	
TOTAL =					2530

FOUNDATION (DEPTH)	FT.	CABLE SLACK	FT.	VERTICAL	FT.
A - POST	4	HANDHOLE	6.5	ALL FOUNDATIONS	3.5
B - CONTROLLER	4	DOUBLE HANDHOLE	13	MAST ARM (L) POLE	20' + L-2=
C - M. ARM POLE		SIGNAL POST	2	BRACKET MOUNTED	13
24"	10	CONTROLLER CAB.	1	PED. PUSHBUTTON	4
30"	15	FIBER OPTIC	13	ELECTRIC SERVICE	13.5
		ELECTRIC SERVICE	1	SERVICE TO GROUND	13.5
		GROUND CABLE	1	POST MOUNTED	6

REVISIONS	
NAME	DATE

ILLINOIS DEPARTMENT OF TRANSPORTATION
SCHEDULE OF QUANTITIES, CABLE PLAN AND PHASE DESIGNATION DIAGRAM
 CHURCH ROAD AND GRAND AVENUE

NO SCALE

DATE 7-9-04
 DRAWN BY ALS
 CHECKED BY MJL

DATE: _____ BY: _____
 CHECKED: _____
 DATE: _____ BY: _____
 CHECKED: _____

