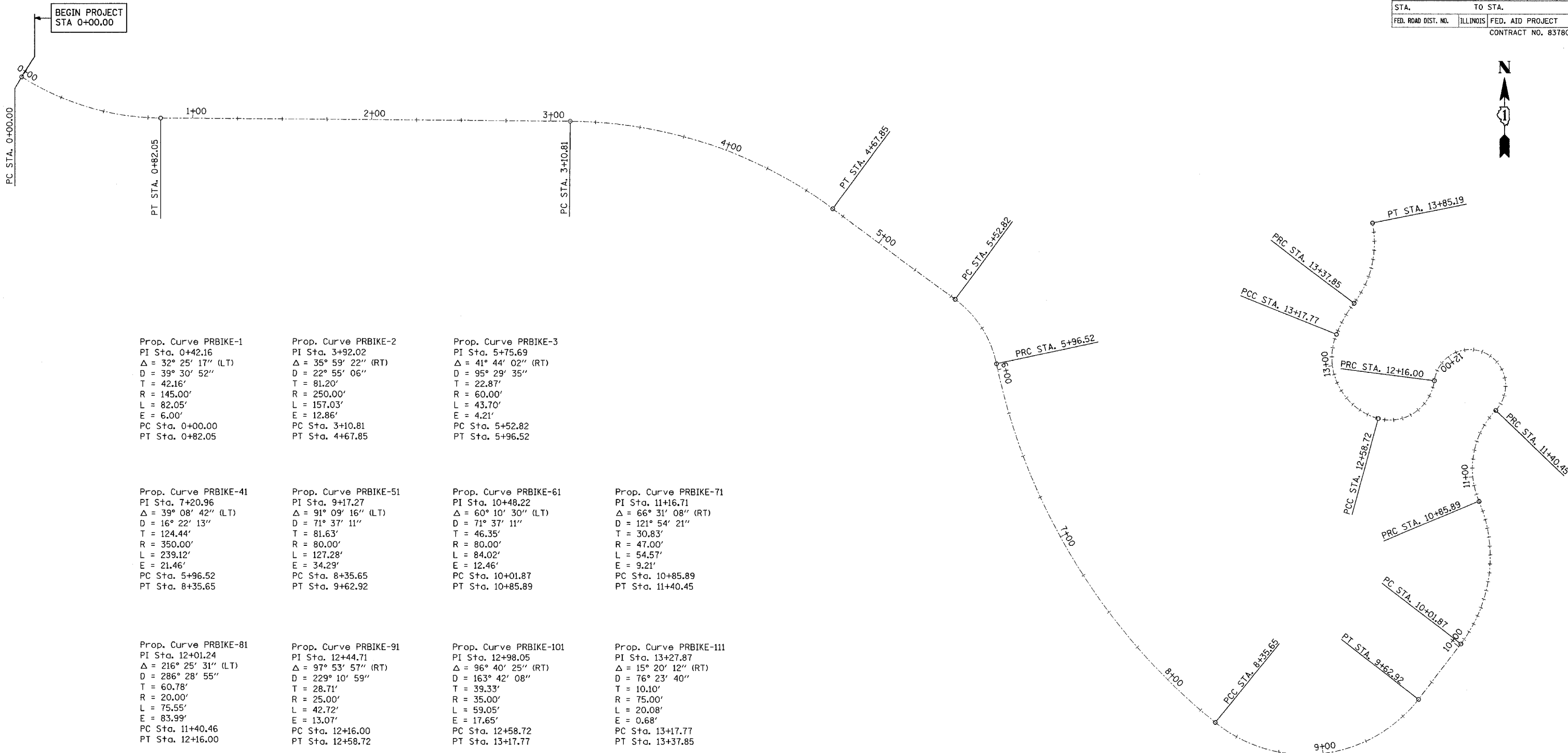


F.A.P. RTE.	SECTION	COUNTY	TOTAL SHEETS	SHEET NO.
	01-00177-00-BT	COOK	18	5
STA.		TO STA.		
FED. ROAD DIST. NO.	ILLINOIS	FED. AID PROJECT		
CONTRACT NO. 83780				



Prop. Curve PRBIKE-1
PI Sta. 0+42.16
 $\Delta = 32^\circ 25' 17''$ (LT)
D = 39' 30' 52"
T = 42.16'
R = 145.00'
L = 82.05'
E = 6.00'
PC Sta. 0+00.00
PT Sta. 0+82.05

Prop. Curve PRBIKE-2
PI Sta. 3+92.02
 $\Delta = 35^\circ 59' 22''$ (RT)
D = 22' 55' 06"
T = 81.20'
R = 250.00'
L = 157.03'
E = 12.86'
PC Sta. 3+10.81
PT Sta. 4+67.85

Prop. Curve PRBIKE-3
PI Sta. 5+75.69
 $\Delta = 41^\circ 44' 02''$ (RT)
D = 95' 29' 35"
T = 22.87'
R = 60.00'
L = 43.70'
E = 4.21'
PC Sta. 5+52.82
PT Sta. 5+96.52

Prop. Curve PRBIKE-41
PI Sta. 7+20.96
 $\Delta = 39^\circ 08' 42''$ (LT)
D = 16' 22' 13"
T = 124.44'
R = 350.00'
L = 239.12'
E = 21.46'
PC Sta. 5+96.52
PT Sta. 8+35.65

Prop. Curve PRBIKE-51
PI Sta. 9+17.27
 $\Delta = 91^\circ 09' 16''$ (LT)
D = 71' 37' 11"
T = 81.63'
R = 80.00'
L = 127.28'
E = 34.29'
PC Sta. 8+35.65
PT Sta. 9+62.92

Prop. Curve PRBIKE-61
PI Sta. 10+48.22
 $\Delta = 60^\circ 10' 30''$ (LT)
D = 71' 37' 11"
T = 46.35'
R = 80.00'
L = 84.02'
E = 12.46'
PC Sta. 10+01.87
PT Sta. 10+85.89

Prop. Curve PRBIKE-71
PI Sta. 11+16.71
 $\Delta = 66^\circ 31' 08''$ (RT)
D = 121' 54' 21"
T = 30.83'
R = 47.00'
L = 54.57'
E = 9.21'
PC Sta. 10+85.89
PT Sta. 11+40.45

Prop. Curve PRBIKE-81
PI Sta. 12+01.24
 $\Delta = 216^\circ 25' 31''$ (LT)
D = 286' 28' 55"
T = 60.78'
R = 20.00'
L = 75.55'
E = 83.99'
PC Sta. 11+40.46
PT Sta. 12+16.00

Prop. Curve PRBIKE-91
PI Sta. 12+44.71
 $\Delta = 97^\circ 53' 57''$ (RT)
D = 229' 10' 59"
T = 28.71'
R = 25.00'
L = 42.72'
E = 13.07'
PC Sta. 12+16.00
PT Sta. 12+58.72

Prop. Curve PRBIKE-101
PI Sta. 12+98.05
 $\Delta = 96^\circ 40' 25''$ (RT)
D = 163' 42' 08"
T = 39.33'
R = 35.00'
L = 59.05'
E = 17.65'
PC Sta. 12+58.72
PT Sta. 13+17.77

Prop. Curve PRBIKE-111
PI Sta. 13+27.87
 $\Delta = 15^\circ 20' 12''$ (RT)
D = 76' 23' 40"
T = 10.10'
R = 75.00'
L = 20.08'
E = 0.68'
PC Sta. 13+17.77
PT Sta. 13+37.85

Prop. Curve PRBIKE-121
PI Sta. 13+63.04
 $\Delta = 48^\circ 25' 56''$ (LT)
D = 102' 18' 50"
T = 25.19'
R = 56.00'
L = 47.34'
E = 5.40'
PC Sta. 13+37.85
PT Sta. 13+85.19

REVISIONS	
NAME	DATE

ILLINOIS DEPARTMENT OF TRANSPORTATION
SHERIDAN ROAD BIKE PATH
PROPOSED ALIGNMENT
AND BENCHMARKS

SCALE: 1"=20'-0"
DATE: 11/05/2004

DRAWN BY: MPG
CHECKED BY:

PLAN	SURVEYED	DATE
	PLOTTED	
	CHECKED	
	BY	
	NO.	
	FILE NAME	

PROFILE	SURVEYED	DATE
	PLOTTED	
	CHECKED	
	BY	
	NO.	
	FILE NAME	