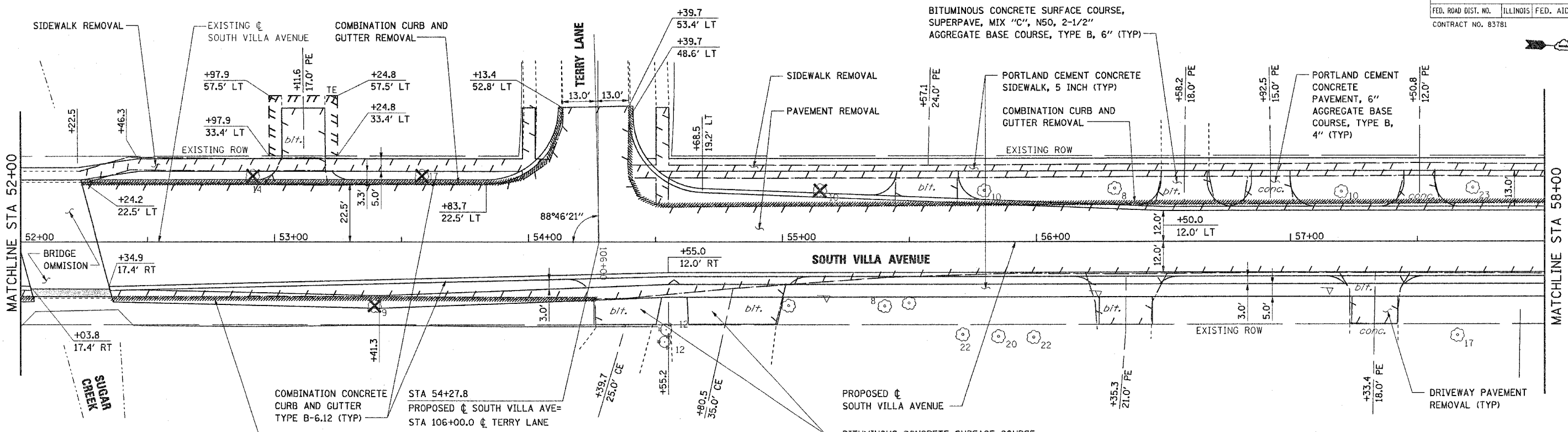


F.A.U. RTE.	SECTION	COUNTY	TOTAL SHEETS	SHEET NO.
2652	00-0069-00-PV	DUPAGE	146	22
STA. 10+70.70 TO STA. 66+16.00				
FED. ROAD DIST. NO.		ILLINOIS	FED. AID PROJECT	
CONTRACT NO. 83781				

DATE	
BY	
APPROVED	
PLAN	
NOTE: SURVEYED, ALIGNED, CHECKED, PAID FILE NAME	
NO. _____	



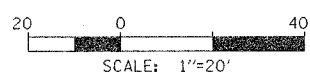
PROPOSED SIDEWALK WIDENING (SEE SIDEWALK WIDENING AND FLOOR DRAIN DETAIL FOR MORE INFORMATION)

COMBINATION CURB AND GUTTER REMOVAL

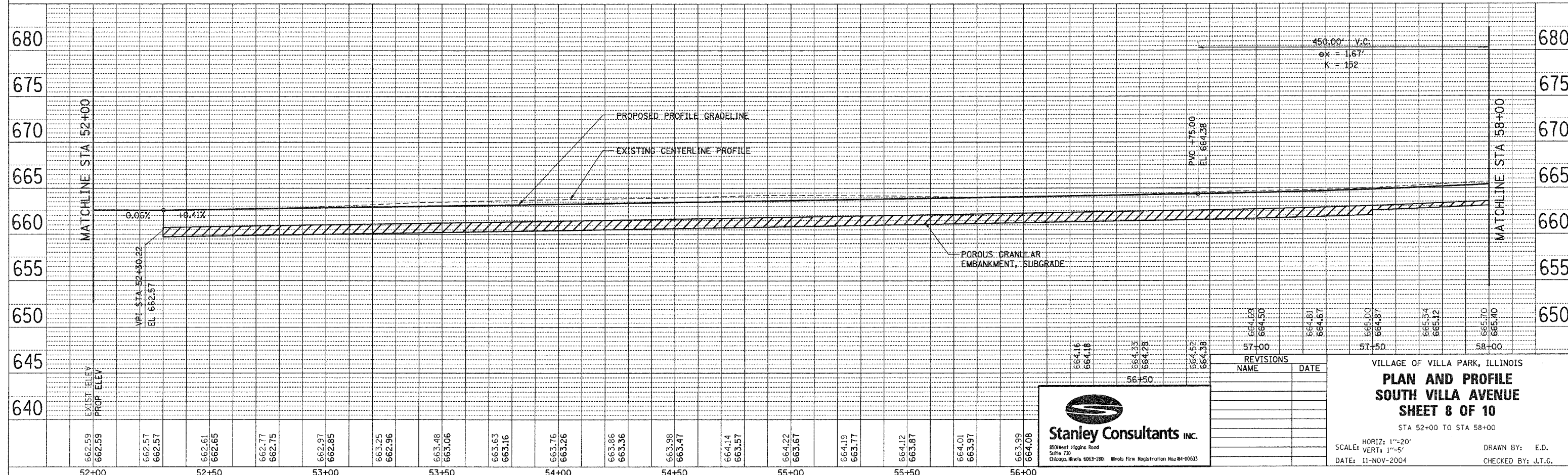
STA 54+27.8  
PROPOSED C SOUTH VILLA AVE=  
STA 106+00.0 C TERRY LANE

BITUMINOUS CONCRETE SURFACE COURSE,  
SUPERPAVE, MIX "C", N50, 4"  
AGGREGATE BASE COURSE, TYPE A, 8"

**NOTE:**  
ALL PROPOSED ENTRANCES TO BE REPLACED  
IN KIND. AGGREGATE ENTRANCES TO BE  
REPLACED WITH BITUMINOUS MATERIALS



DATE	
BY	
APPROVED	
PROFILE	
NOTE: SURVEYED, GAVES CHECKED, STRUCTURE REMAINING CORDED	
NO. _____	



**Stanley Consultants INC.**  
850 West Higgins Road  
Suite 730  
Chicago, Illinois 60639-2800 Illinois Firm Registration No. 04-00033

REVISIONS	
NAME	DATE
57+00	
57+50	
58+00	

VILLAGE OF VILLA PARK, ILLINOIS  
**PLAN AND PROFILE**  
**SOUTH VILLA AVENUE**  
SHEET 8 OF 10  
STA 52+00 TO STA 58+00

SCALE: HORIZ: 1"=20'  
VERT: 1"=5'

DATE: 11-NOV-2004

DRAWN BY: E.D.  
CHECKED BY: J.T.G.