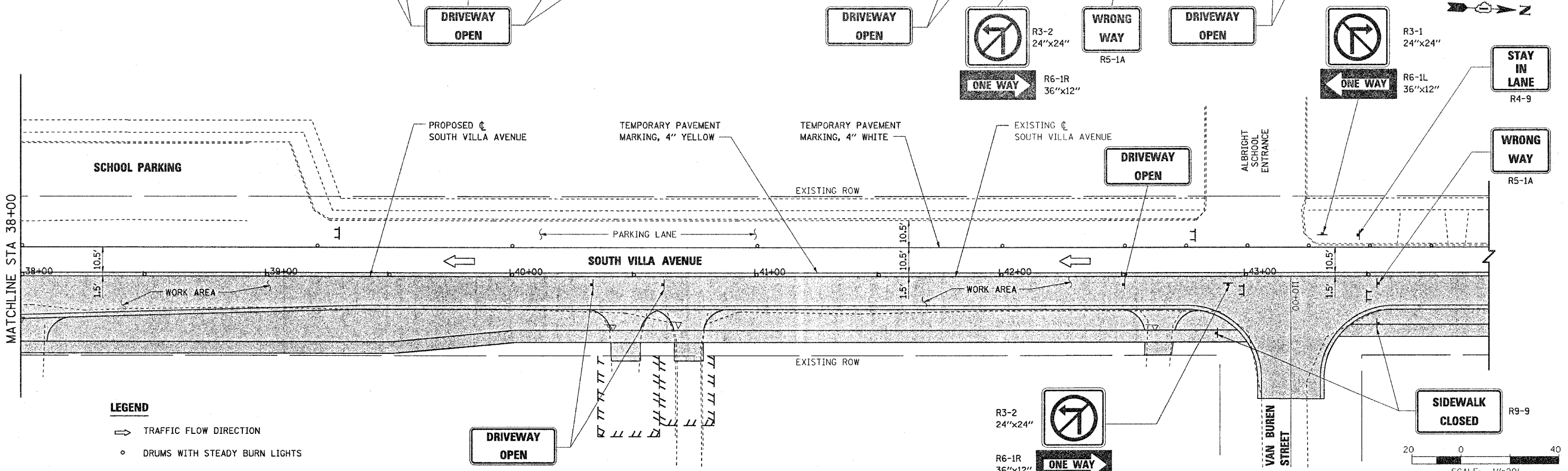
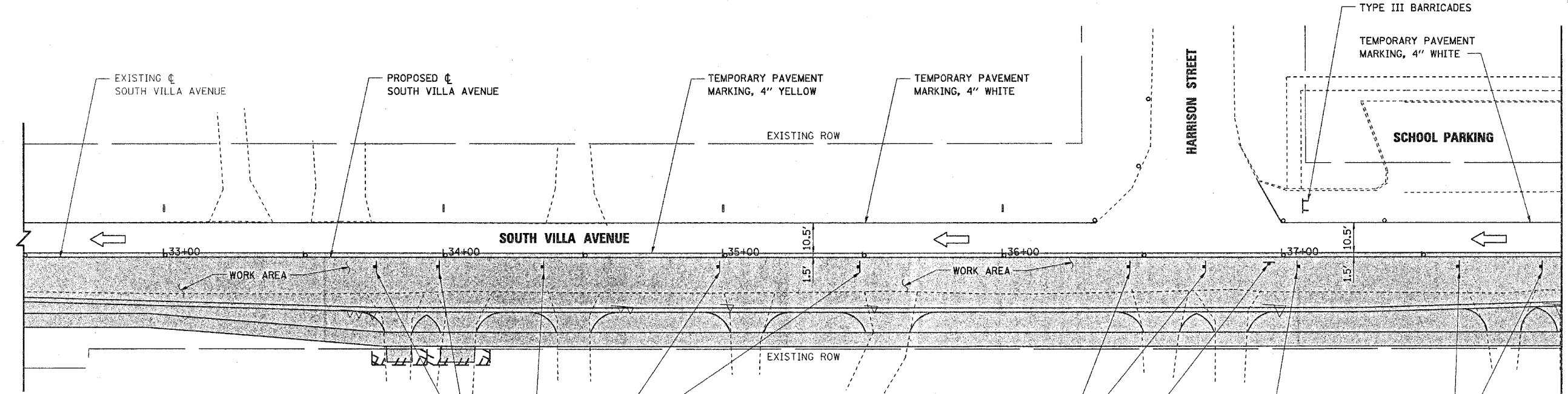


F.A.U. RTE.	SECTION	COUNTY	TOTAL SHEETS	SHEET NO.
2652	00-00069-00-PV	DUPAGE	146	30
STA. 10+70.70		TO STA. 66+16.00		
FED. ROAD DIST. NO.		ILLINOIS FED. AID PROJECT		
CONTRACT NO. 83781				

- NOTES:**
- SEE ALSO TEMPORARY ONE WAY DETOUR PLAN FOR ADDITIONAL SIGNING DETAILS.
 - THE CONTRACTOR SHALL PLACE ONE (1) TEMPORARY DRIVEWAY SIGN AT EACH DRIVEWAY LOCATION.
 - THE CONTRACTOR SHALL PLACE THE FOLLOWING SIGNS AT ALL INTERSECTIONS AS DIRECTED BY THE ENGINEER:
R3-1
R3-2
R6-1L
R6-1R
R5-1A
R9-9

DATE	BY
DATE	BY
DATE	BY
DATE	BY
DATE	BY

DATE	BY
DATE	BY
DATE	BY
DATE	BY
DATE	BY



LEGEND

- ⇨ TRAFFIC FLOW DIRECTION
- DRUMS WITH STEADY BURN LIGHTS
- VERTICAL PANELS WITH STEADY BURN LIGHTS
- TT TYPE III BARRICADES WITH TWO STEADY BURN LIGHTS
- ⊕ TRAFFIC CONTROL SIGNS
- ▨ WORK AREA
- ▤ TEMPORARY PAVEMENT



REVISIONS	
NAME	DATE

VILLAGE OF VILLA PARK, ILLINOIS

SUGGESTED MAINTENANCE OF TRAFFIC

SOUTH VILLA AVENUE

STAGE 1

SHEET 6 OF 10

SCALE: 1"=20'

DATE: 11-NOV-2004

DRAWN BY: E.D.

CHECKED BY: J.T.G.