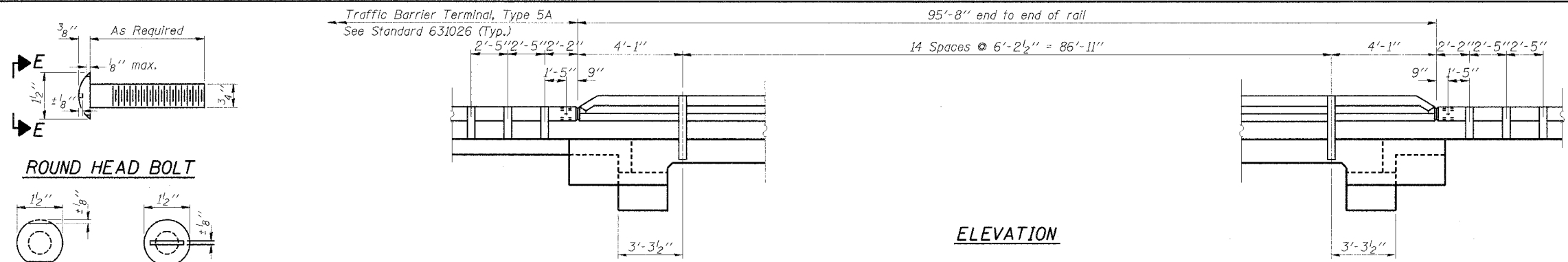
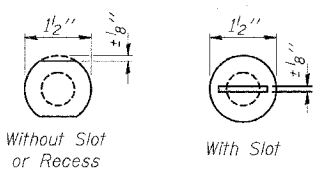


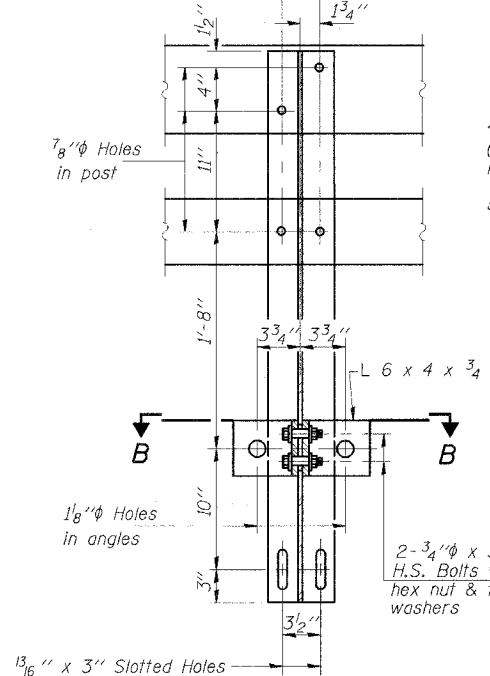
ROUTE NO.	SECTION	COUNTY	SHEET	TOTAL SHEETS
F.A.S. 1464	03-00028-03-BR	TAZEWELL	15	12
PROJ. NO.	CONTRACT NO.	ILLINOIS	FED. AID PROJ. NO.	
	89346			



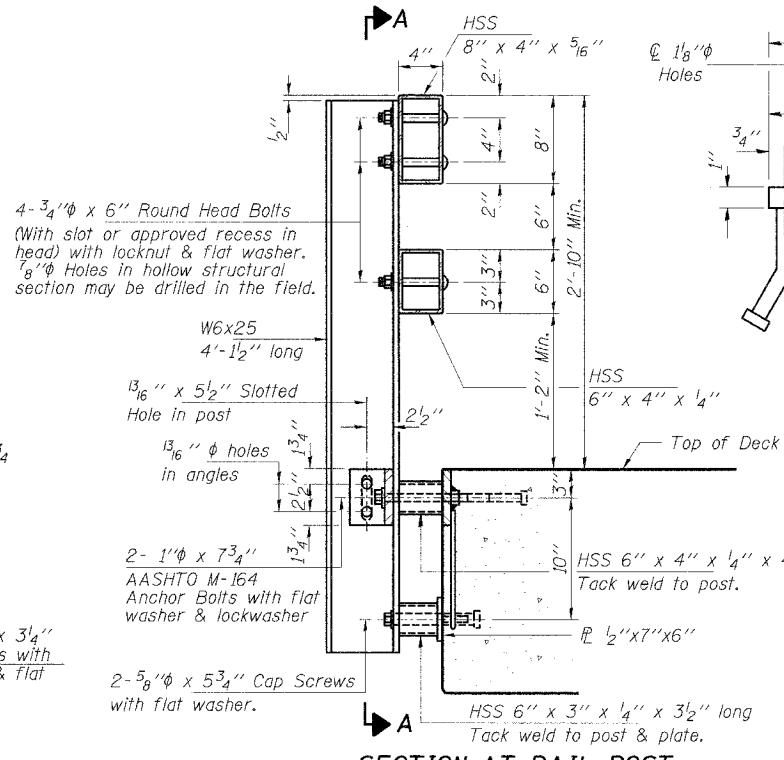
ROUND HEAD BOLT



VIEW E-E



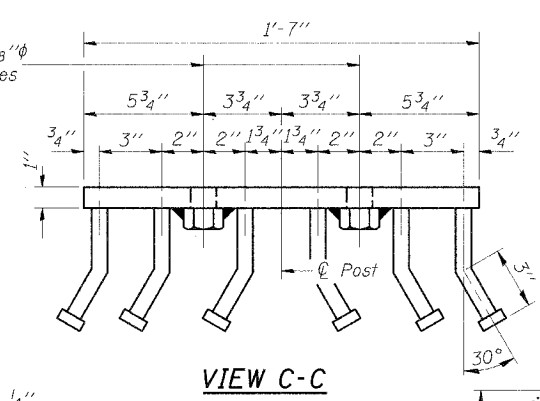
SECTION A-A



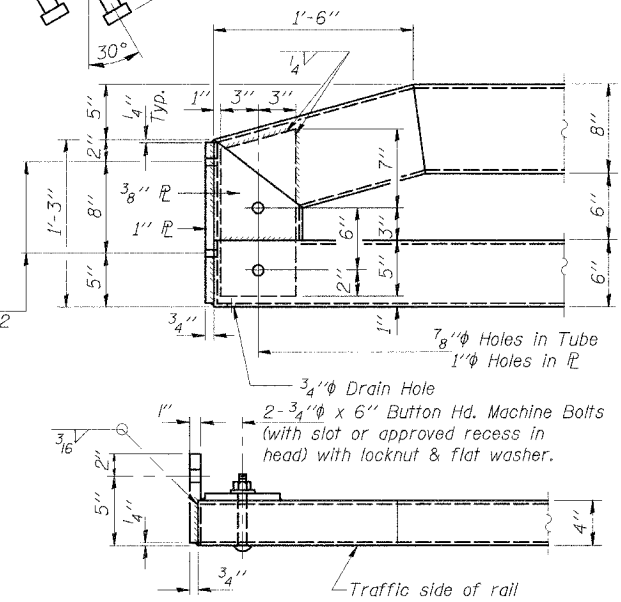
SECTION AT RAIL POST

Reinforcement bars in the top of the deck may be placed with a 1/2" minimum clearance in the area of the rail post anchor devices. The studs of the anchor devices shall be placed below the top reinforcement bars and the outermost longitudinal reinforcement bar shall be placed directly above the studs of the rail post anchor device.

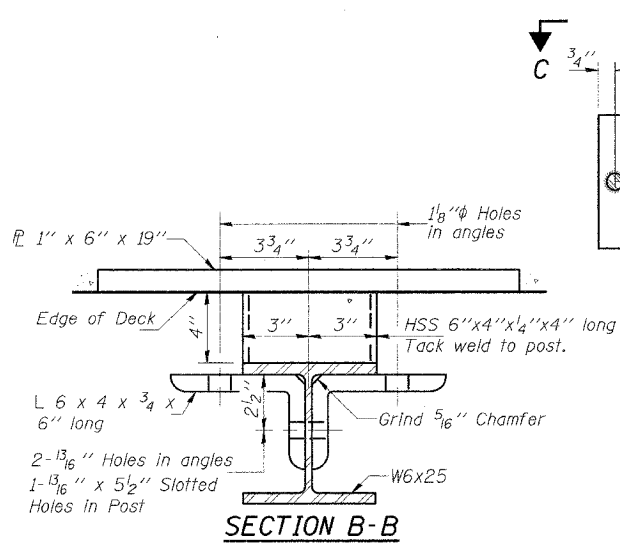
ELEVATION



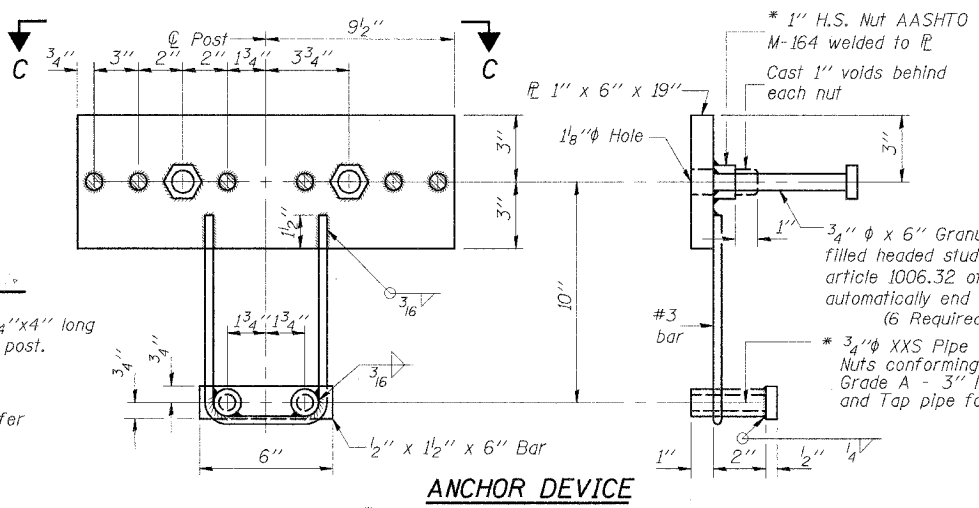
VIEW C-C



END OF RAIL DETAILS

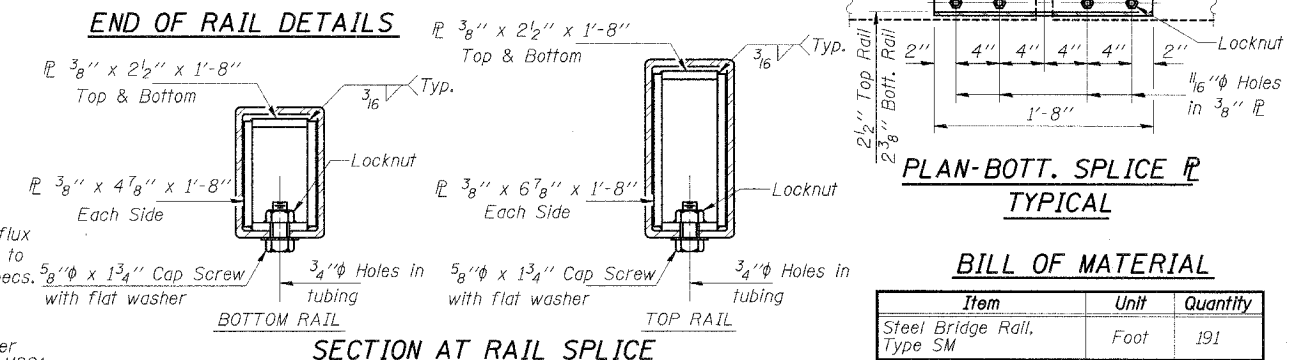


SECTION B-B



ANCHOR DEVICE

* Threaded areas shall be plugged or blocked off during casting of beam. Galvanized after fabrication.



PLAN-BOTT. SPLICE P TYPICAL

SECTION AT RAIL SPLICE

BILL OF MATERIAL

Item	Unit	Quantity
Steel Bridge Rail, Type SM	Foot	191

RAILING DETAILS

F.A.S. 1464 / C.H. 2 / DELAVAN ROAD
SECTION 03-00028-03-BR
TAZEWELL COUNTY
STR. NO. 090-3241 / STATION 10+00

HLR
Rice, Berry and Associates
A Division of Hampton, Lenzini and Renwick, Inc.
Civil & Structural Engineers
801 S. Durkin Drive
Springfield, Illinois 62704
217-546-3400
P.O. Box 1036
DuQuoin, Illinois 62832
618-790-4637
Date: 08/03/04
Account Number 12-91-0012-1
DESIGNED: T.P.L. CHECKED: S.W.M. DRAWN: D.B.