

F.A.B. RTE.	SECTION	COUNTY	TOTAL SHEETS	SHEET NO.
828	12BR-2	CUMBERLAND	32	1

90920

STATE OF ILLINOIS
DEPARTMENT OF TRANSPORTATION
DIVISION OF HIGHWAYS
**PLANS FOR PROPOSED
HIGHWAY IMPROVEMENT**

FOR INDEX OF SHEETS,
AND IDOT HIGHWAY STANDARDS SEE SHEET 2

PLAN		=	1:250
SCALES	PROFILE	HORIZ	= 1:125
		VERT	= 1:50
	CROSS SECTIONS	HORIZ	= 1:100
		VERT	= 1:50

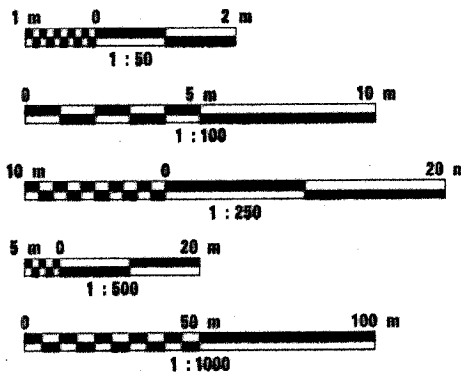
**FAP ROUTE 828 (MONTROSE RD.)(IL 121)
SECTION 12BR-2
PROJECT F-0828(021)
CUMBERLAND COUNTY**

**BOX CULVERT REPLACEMENT
C-95-011-98**

DESIGN DESIGNATION
SEE PAGE 4

**J.U.L.I.E.
JOINT UTILITY LOCATION INFORMATION FOR EXCAVATION
1-800-893-0123
NEOGA TOWNSHIP**

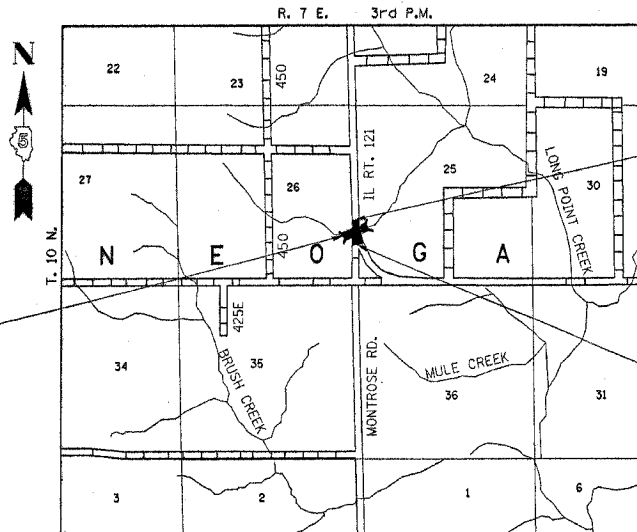
METRIC RATIOS



FULL SIZE PLANS HAVE BEEN PREPARED USING STANDARD ENGINEERING SCALES. REDUCED SIZED PLANS WILL NOT CONFORM TO STANDARD SCALES. IN MAKING MEASUREMENTS ON REDUCED PLANS, THE ABOVE SCALES MAY BE USED.

HIGHWAY CLASSIFICATION	MINOR ARTERIAL
1999 ADT IL 121	3100 8.1% TRUCKS
1999 ADT MONTROSE ROAD	1600 8.7% TRUCKS
2021 ADT MONTROSE ROAD	1900 8.7% TRUCKS

CONTRACT NO. 90920



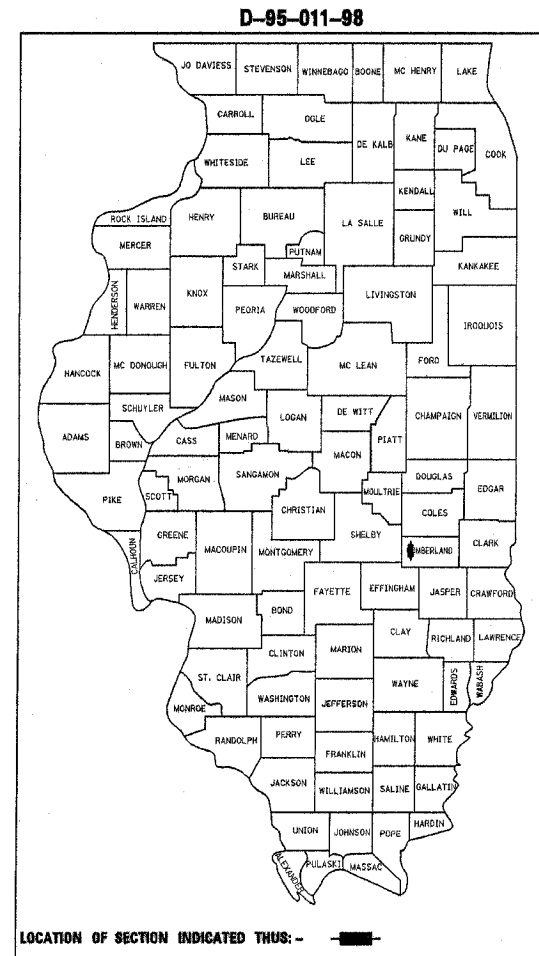
SECTION 12BR-2
INCLUDES A 3.6 m X 2.4 m
PRECAST BOX CULVERT
WITH CAST IN PLACE
END SECTIONS.
STATION 100+045.375
SM 018-8307 (EXISTING)
SM 018-8604 (PROPOSED)

SECTION 12BR-2
BEGINS
STATION 100+016.900

SECTION 12BR-2
ENDS
STATION 100+072.423



GROSS LENGTH OF SECTION = 55.523 m = 0.055 km
NET LENGTH OF SECTION = 55.523 m = 0.055 km



STATE OF ILLINOIS
DEPARTMENT OF TRANSPORTATION
DIVISION OF HIGHWAYS

SUBMITTED Sept 30 20 04
[Signature] DISTRICT ENGINEER
December 10 20 04
Mike New [Signature] ENGINEER OF DESIGN AND ENVIRONMENT
December 10 20 04
Victor Madenko [Signature] DIRECTOR, DIVISION OF HIGHWAYS

WOOLPERT
WOOLPERT LLP
4315 North Illinois Street,
Suite 1C
Belleville, Illinois 62226-1045
618-277-7004
Fax-618-277-6114

**PRINTED BY THE AUTHORITY
OF THE STATE OF ILLINOIS**

CONSULTANT LIAISON CONTACT: N. FASIG, PROJECT ENGINEER : S. NEIHART 217-465.4181



Jason A. Waters [Signature]
ILLINOIS PROFESSIONAL ENGINEER NO. 062-050429 DATE 05-15-03
EXP. 11-30-2003