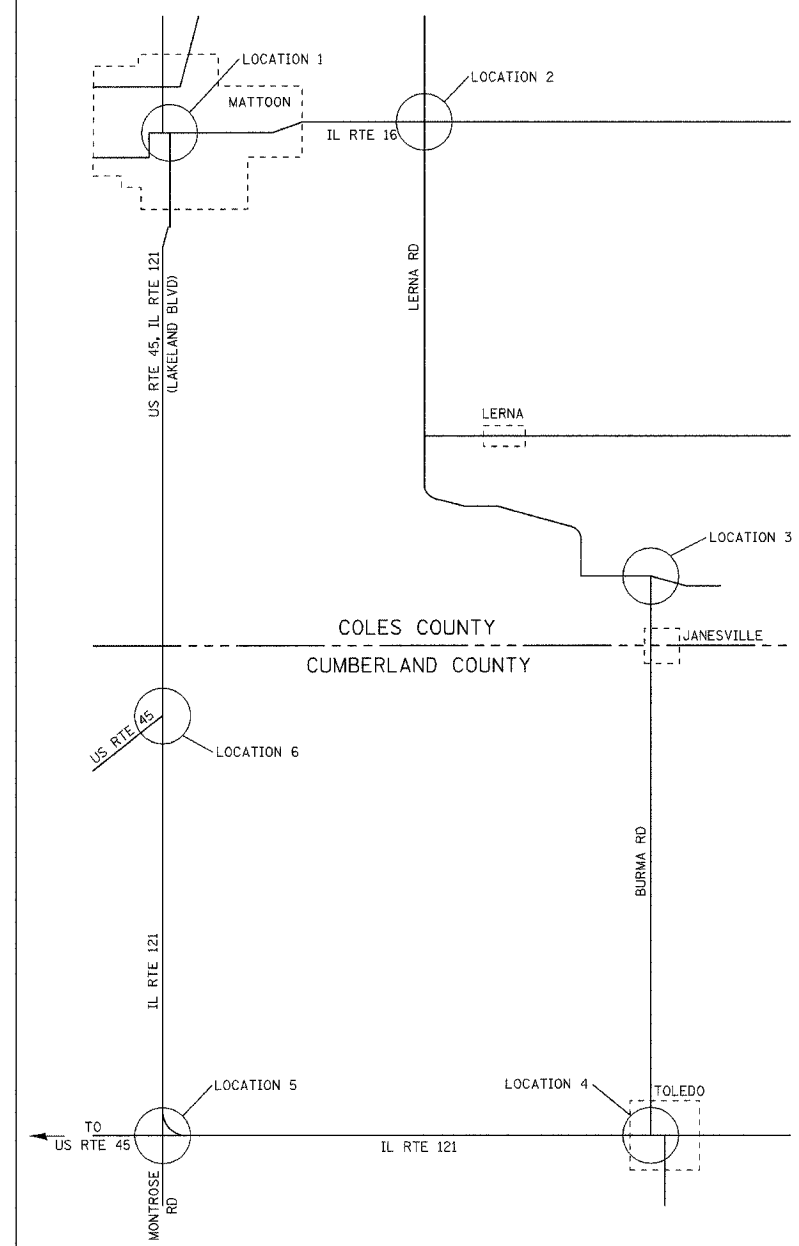
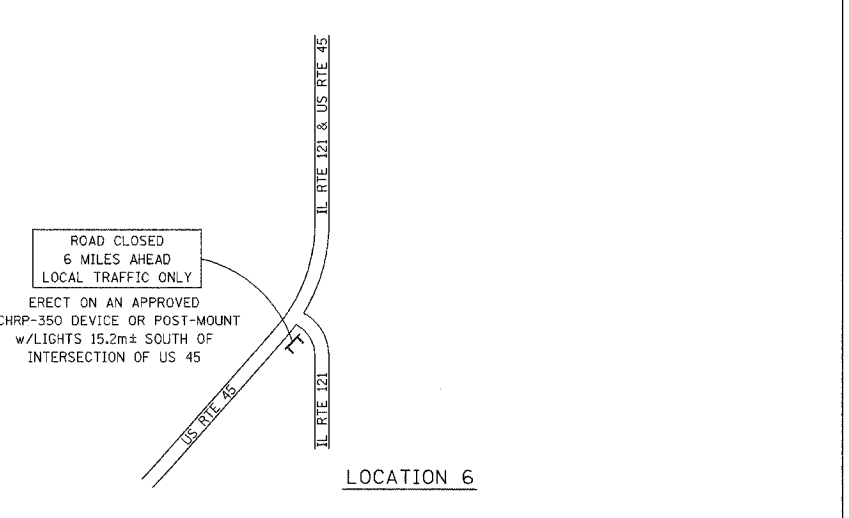
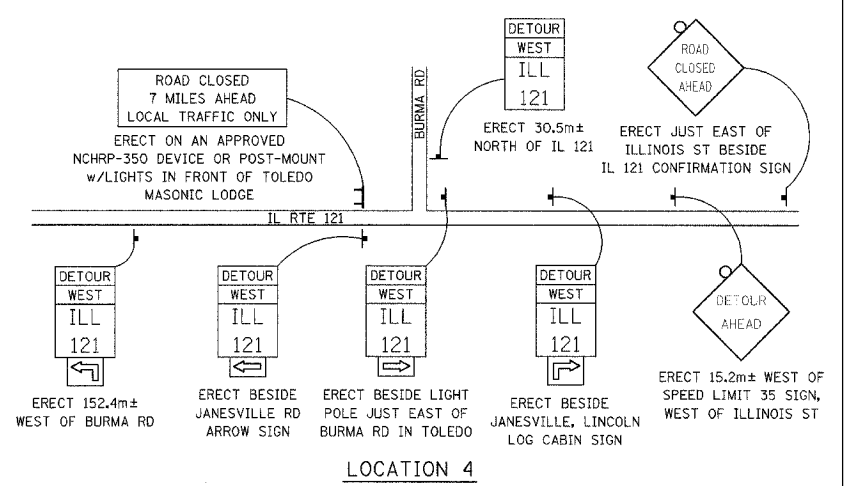
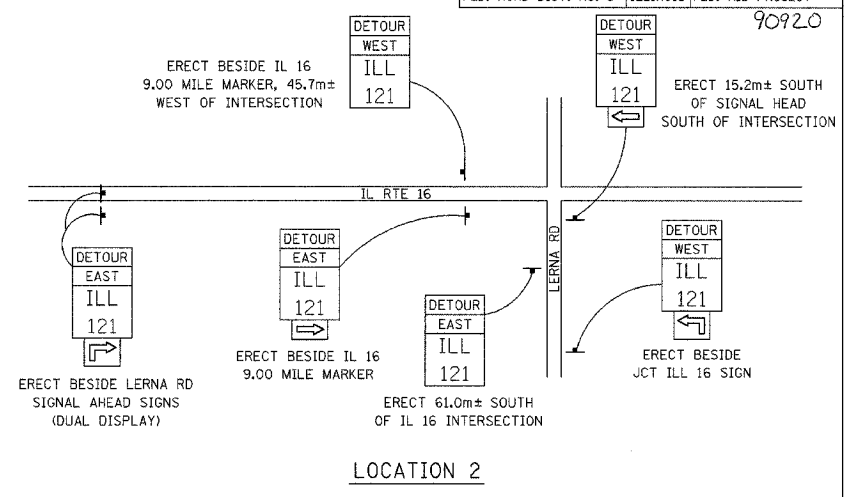
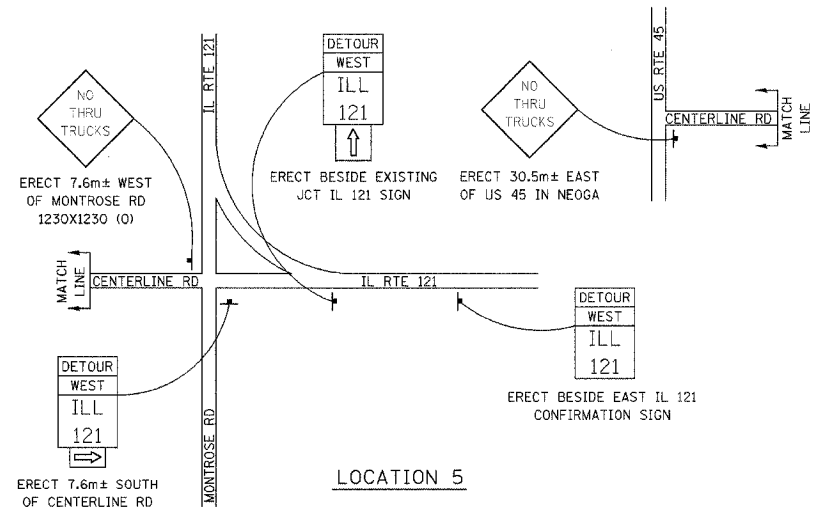
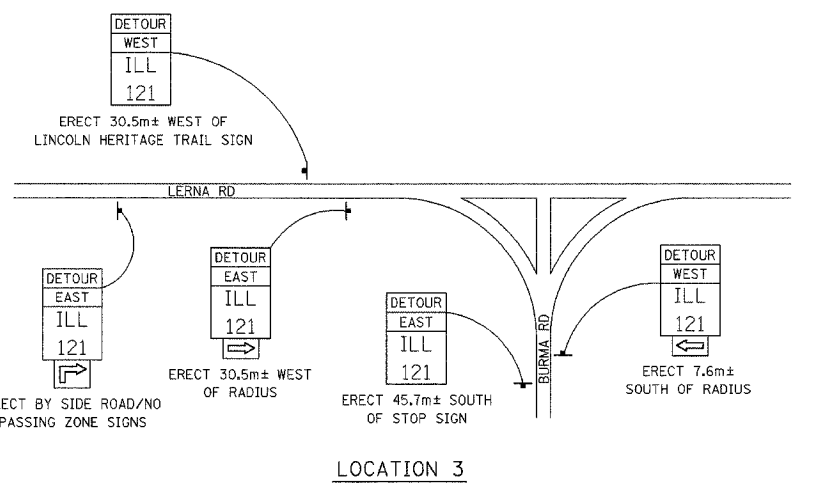
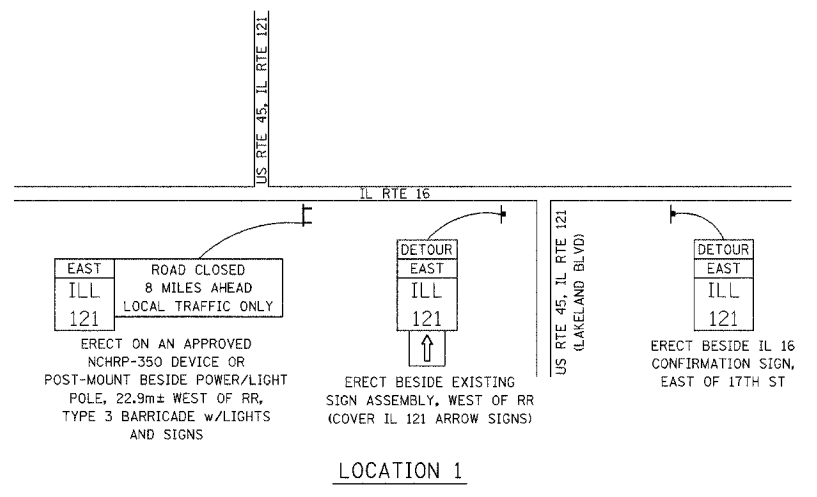


F.A.P. RTE.	SECTION	COUNTY	TOTAL SHEETS	SHEET NO.
828	12BR-2	CUMBERLAND	32	8
STA.		TO STA.		
FED. ROAD DIST. NO. 5 ILLINOIS FED. AID PROJECT				

90920



DETOUR SIGNING LOCATION MAP



REVISIONS	
NAME	DATE

ILLINOIS DEPARTMENT OF TRANSPORTATION  
 SPECIAL DETAIL FOR TRAFFIC CONTROL AND PROTECTION FOR TEMPORARY DETOUR  
 FAP 828, (MONTROSE RD.)  
 CUMBERLAND COUNTY  
 DRAWN BY BARGIEL  
 CHECKED BY STEUART  
 DATE 2/10/03

DETOUR SIGNING DETAILS, FAP 828, (MONTROSE RD.)