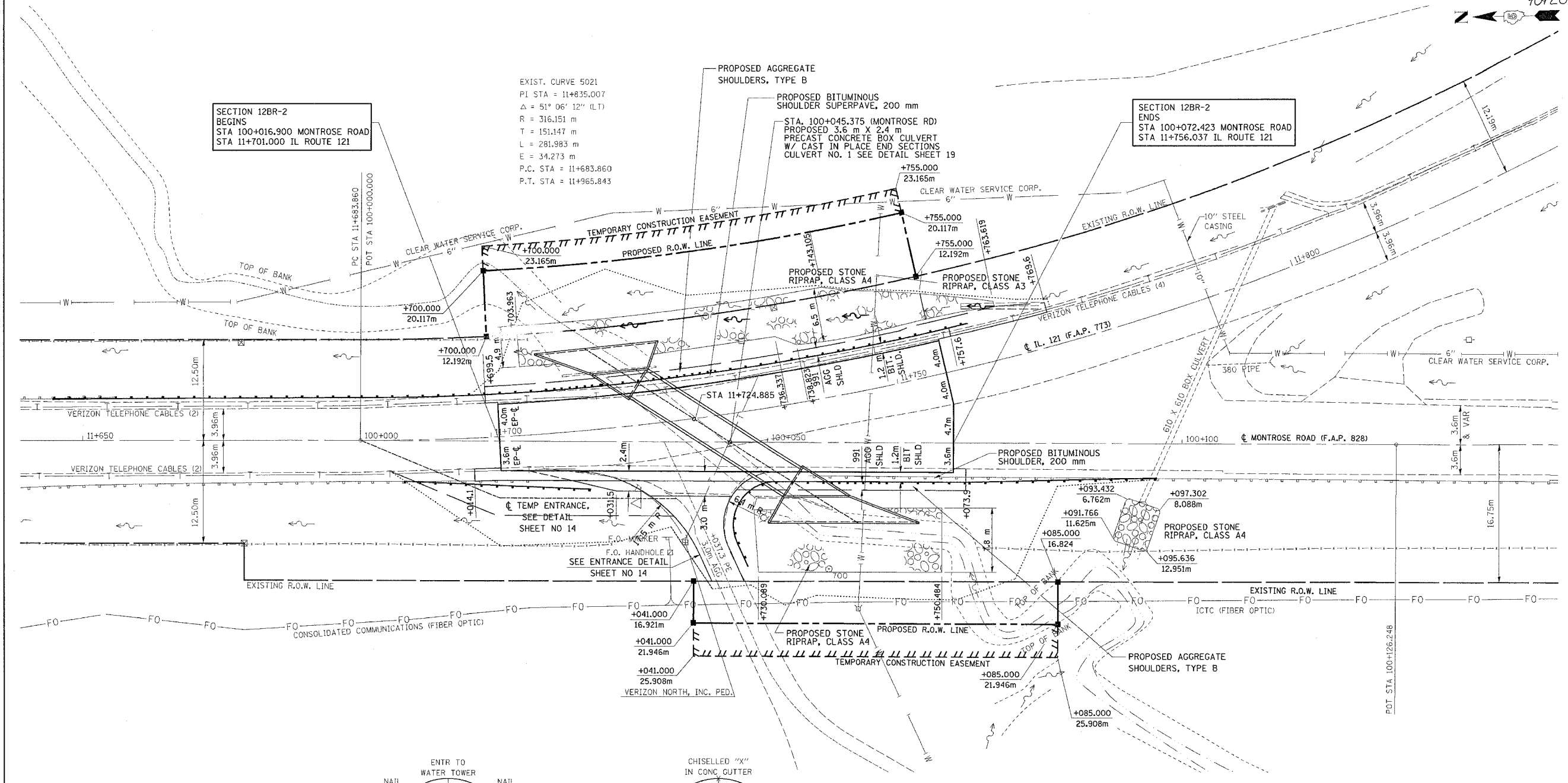


F.A.P. RTE.	SECTION	COUNTY	TOTAL SHEETS	SHEET NO.
828	12BR-2	CUMBERLAND	32	9
STA. 11+650.000		TO STA. 11+800.000		
FED. ROAD DIST. NO. 5 ILLINOIS FED. AID PROJECT				

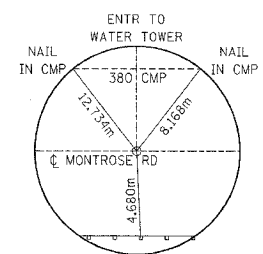
9092.0



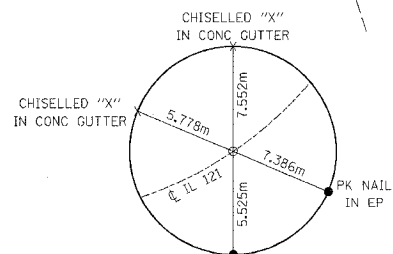
SECTION 12BR-2
BEGINS
STA 100+016.900 MONTROSE ROAD
STA 11+701.000 IL ROUTE 121

EXIST. CURVE 5021
PI STA = 11+835.007
 $\Delta = 51^\circ 06' 12''$ (LT)
R = 316.151 m
T = 151.147 m
L = 281.983 m
E = 34.273 m
P.C. STA = 11+683.860
P.T. STA = 11+965.843

SECTION 12BR-2
ENDS
STA 100+072.423 MONTROSE ROAD
STA 11+756.037 IL ROUTE 121

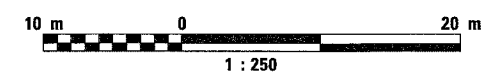


POT STA 100+126.248
PK NAIL
N 10020.165
E 99976.746



PT STA 11+965.843
CONCRETE NAIL
N 99898.449
E 100092.909

NOTE: STA/OFFSET CALL OUTS ON THE EAST SIDE ARE FROM IL-121 AND STA/OFFSETS TO THE WEST SIDE ARE FROM MONTROSE ROAD.



- BENCHMARK: CHISELED "□" ON TOP CENTER OF WEST HEADWALL OF STRUCTURE # 8307
ELEV. = 183.637
- BENCHMARK: CHISELED "□" ON CENTER OF LOWER HEADWALL OF A. R. B. C. AT SOUTHEAST QUARDENT OF MONTROSE ROAD & CENTERLINE ROAD
ELEV. = 189.924
- BENCHMARK: TOP OF CONCRETE PROJECT MARKER FA 535A ON THE NORTH SIDE OF ROUTE 121 AT THE EAST END OF THE CURVE.
ELEV. = 192.987

REVISIONS	
NAME	DATE

ILLINOIS DEPARTMENT OF TRANSPORTATION
PLAN SHEET
FAP 828 (MONTROSE RD.)
CUMBERLAND COUNTY
DRAWN BY BANDY
CHECKED BY STEUART
DATE 1/15/03