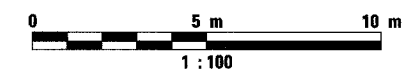
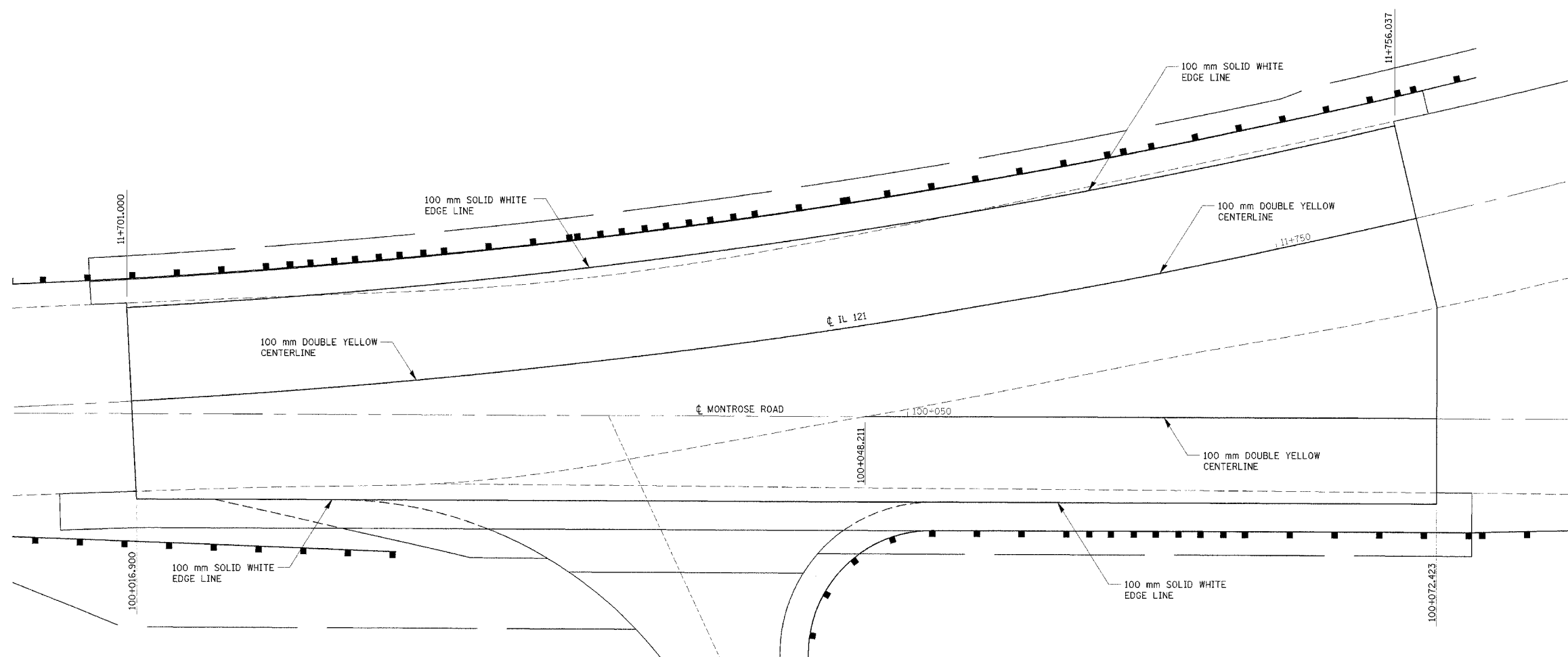


F.A.P. RTE.	SECTION	COUNTY	TOTAL SHEETS	SHEET NO.
828	12BR-2	CUMBERLAND	32	15
STA. 11+650.000		TO STA. 11+800.000		
FED. ROAD DIST. NO. 5		ILLINOIS FED. AID PROJECT		

90920



REVISIONS	
NAME	DATE

ILLINOIS DEPARTMENT OF TRANSPORTATION  
**PAVEMENT MARKING DETAIL**  
 FAP 828 (MONTROSE RD.)  
 CUMBERLAND COUNTY  
 DATE 2/10/03  
 DRAWN BY BARGIEL  
 CHECKED BY STEUART

PAVEMENT MARKING DETAIL, FAP 828 (MONTROSE RD.)

05/15/2003 08:22:36 AM  
 pavemnt\_mrkng\_deta1.dwg  
 9/15/03 10:07:07  
 pavemnt\_mrkng\_deta1.dwg