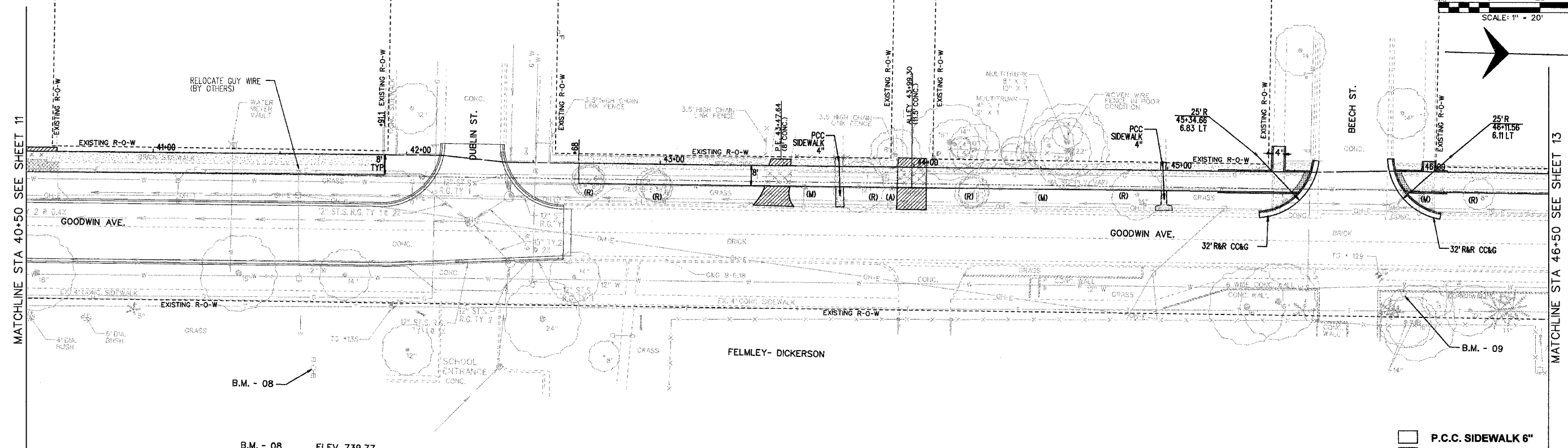
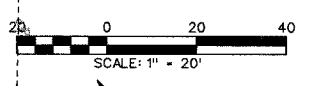


SECTION	COUNTY	TOTAL SHEETS	SHEET NO.
99-00352-00-BT	CHAMPAIGN	38	12
STA.	TO STA.		
F.H.W.A. REG.	ILLINOIS PROJECT	TE-0005(76)	

NOTE:
FROM PARK STREET TO DUBLIN STREET,
RAMPS FOR BIKEPATH ARE ALREADY IN
PLACE, AS REFLECTED IN THESE PLANS.



B.M. - 08 ELEV. 739.77
CHISELED \square ON TOP WEST SIDE OF CONCRETE
LIGHT BASE POLE EAST SIDE OF GOODWIN
AT NORTH END OF KING SCHOOL PARKING LOT

B.M. - 09 ELEV. 742.25
CENTER CAP NUT ON FIRE HYDRANT ON
EAST SIDE OF GOODWIN, NORTH OF BEECH
ST. CENTERLINE EXTENDED

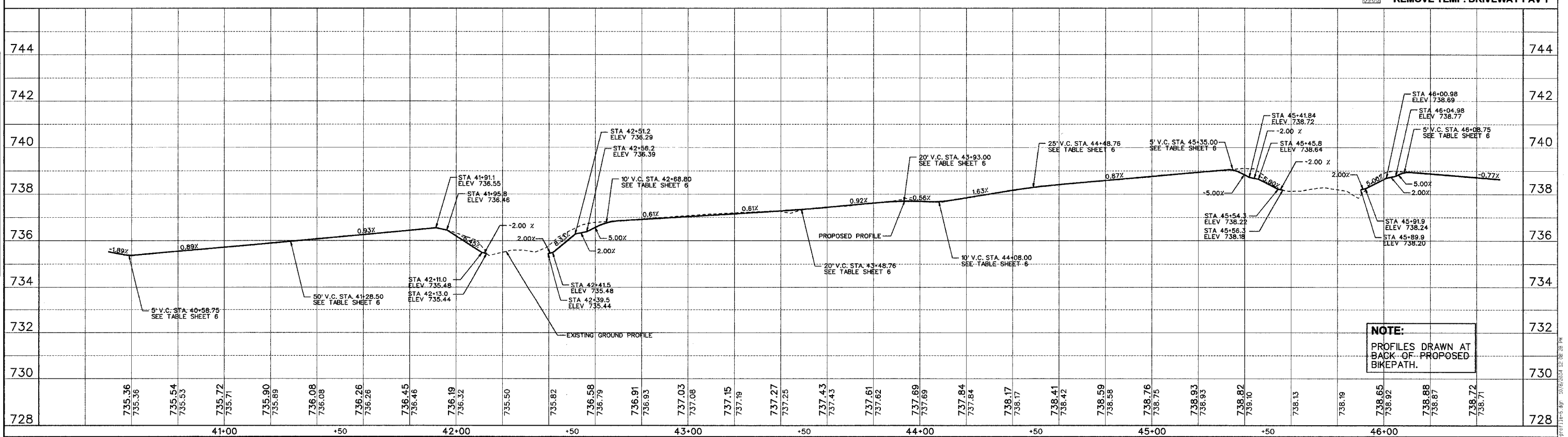
- P.C.C. SIDEWALK 6"
- P.C.C. DRIVEWAY PAVEMENT
- SIDEWALK REMOVAL
- PAVEMENT REMOVAL
- REMOVE TEMP. DRIVEWAY PAVT

PLAN

DATE	
BY	
SURVEYED	
PLOTTED	
NOTE BOOK ALIGNMENT CHECKED	
NOTE BOOK RT. OF WAY CHECKED	
NO.	

PROFILE

DATE	
BY	
SURVEYED	
PLOTTED	
NOTE BOOK GRADES CHECKED	
NOTE BOOK B.M.'S NOTED	
NO.	
STRUCTURE NOTATIONS CHKD	



NOTE:
PROFILES DRAWN AT
BACK OF PROPOSED
BIKEPATH.