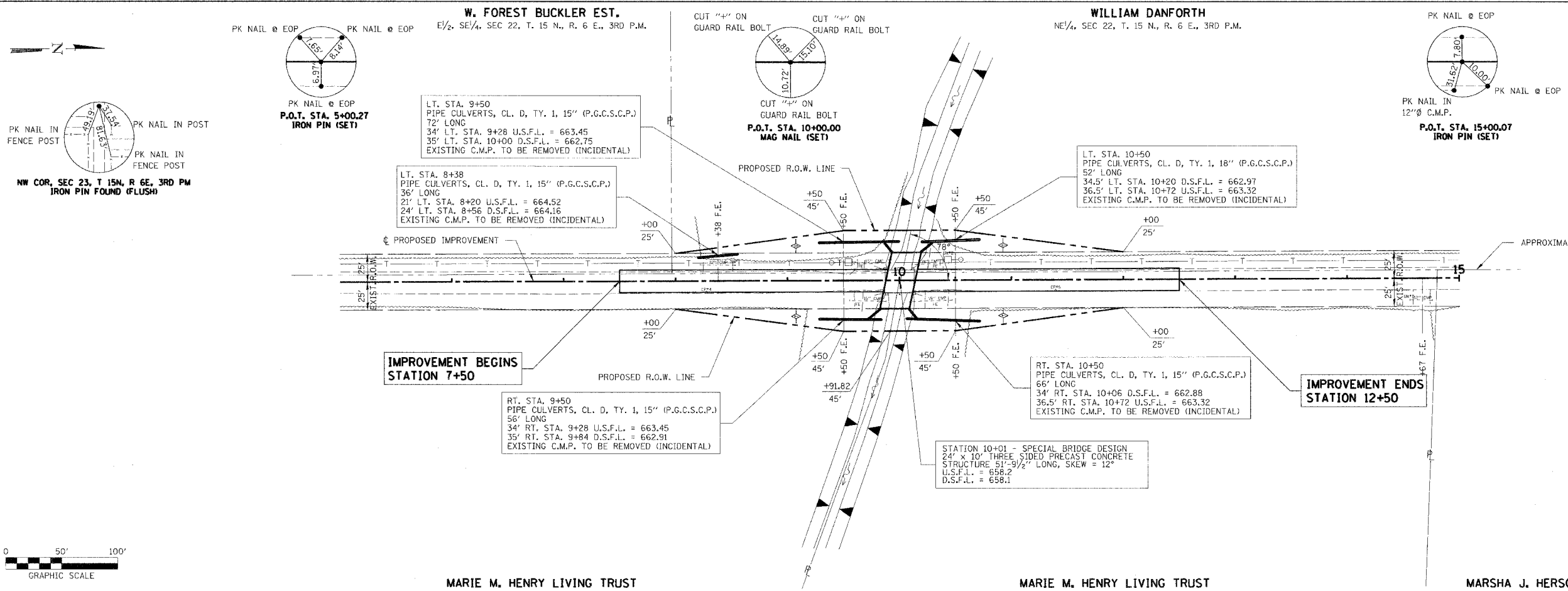


DATE		
BY		
REVISIONS		
NO.	DATE	DESCRIPTION
1		
2		
3		
4		
5		

DATE		
BY		
REVISIONS		
NO.	DATE	DESCRIPTION
1		
2		
3		
4		
5		

T.R.	SECTION	COUNTY	TOTAL SHEETS	SHEET NO.
158	03-05123-00-BR	MOULTRIE	13	3
STA. 5+00.27		TO STA. 15+00.07		
FED. ROAD DIST. NO.		ILLINOIS CONTRACT NO. 91318		
LOWE ROAD DISTRICT				



TEMPORARY DITCH CHECKS
TOTAL = 4 EACH
LOCATION AS APPROVED BY ENGINEER.

ENTRANCES TO BE BUILT
 LT. STA. 8+38 F.E. -8.2% EARTH 24' SURF.
 LT. STA. 9+50 F.E. -9.2% EARTH 24' SURF.
 RT. STA. 9+50 F.E. -11.5% EARTH 24' SURF.
 LT. STA. 10+50 F.E. -10.0% EARTH 24' SURF.
 RT. STA. 10+50 F.E. -9.6% EARTH 24' SURF.
 QUANTITIES INCLUDED IN EARTHWORK TABLE.

CHANNEL EXCAVATION
THE CHANNEL SHALL BE EXCAVATED AS SHOWN IN THE PLANS WITH 2:1 SIDE SLOPES WITHIN THE LIMITS OF THE PROPOSED STRUCTURE, THEN TAPER TO THE EXISTING CHANNEL AT THE R.O.W. LINES. ONLY SUITABLE EXCAVATED MATERIAL SHALL BE USED IN THE EMBANKMENT.

EXISTING STRUCTURE NO. 070-4506
STATION 10+00 - 2 SPAN STEEL WF BEAM BRIDGE WITH TIMBER DECK ON CLOSED TIMBER ABUTMENTS AND WING WALLS AND WF BEAM PIER CAP WITH TIMBER PILES. 24.7' BK. TO BK. ABUTS; 20.45' o.-o. DECK. REMOVAL OF EXISTING STRUCTURES = 1 EACH

