

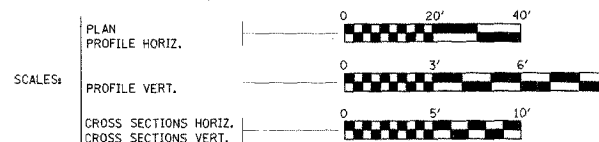
ROUTE NO.	SECTION	COUNTY	TOTAL SHEETS	SHEET NO.
TR 135	*	Vermilion	8	1
FED. ROAD DIST. NO. 7		ILLINOIS ROAD DIST. PROJECT		
*00-15132-00-BR				

STATE OF ILLINOIS
DEPARTMENT OF TRANSPORTATION

PLANS FOR PROPOSED
BRIDGE REPLACEMENT

INDEX OF SHEETS

SHEET NO.	DESCRIPTION
1	COVER SHEET
2	SUMMARY OF QUANTITIES, TYPICAL SECTIONS AND SCHEDULES
3	PLAN AND PROFILE
4 - 7	BRIDGE PLANS
8	CROSS SECTION

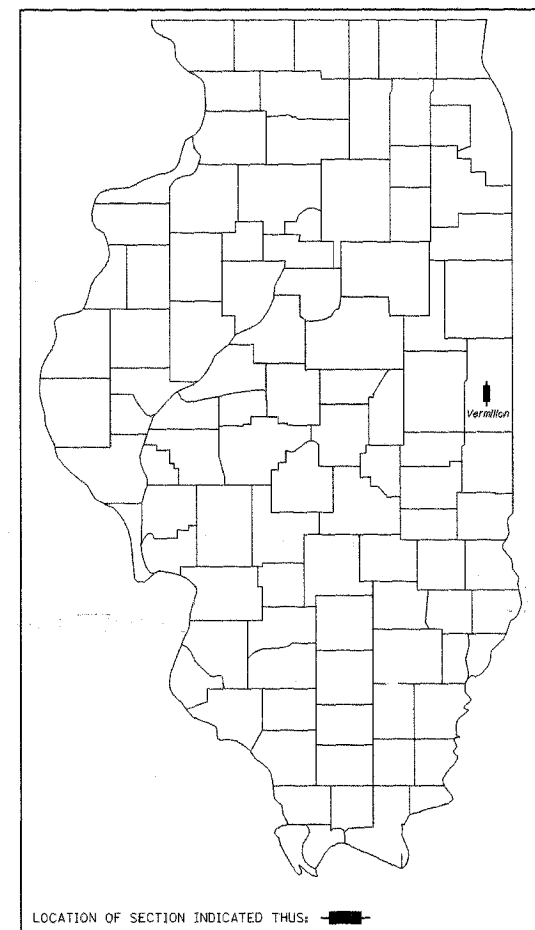


ILLINOIS DEPT. OF TRANSPORTATION STANDARD DRAWINGS

STANDARD NO.	DESCRIPTION
285001-01	FABRIC FORMED CONCRETE REVETMENT MATS
515001-02	NAME PLATE FOR BRIDGES
631026-02	TRAFFIC BARRIER TERMINAL, TYPE 5 & 5A
701006-02	OFF-ROAD OPERATIONS 2L, 2W, 4.5M (15') TO PAVEMENT EDGE FOR SPEEDS \geq 45 MPH
702001-05	TRAFFIC CONTROL DEVICES
BLR 21-6	TYPICAL APPLICATION OF TRAFFIC CONTROL DEVICES FOR CONSTRUCTION ON RURAL LOCAL HIGHWAYS
BLR 23-1	TRAFFIC BARRIER TERMINAL TYPE 1

VERMILION COUNTY
PILOT ROAD DISTRICT
SECTION 00-15132-00-BR
OLD STRUCTURE NO. 092-3113
NEW STRUCTURE NO. 092-3483
TR 135
BRIDGE REPLACEMENT AND REHABILITATION PROJECT
PROJECT NO. BROS-183(87)
C-95-324-04

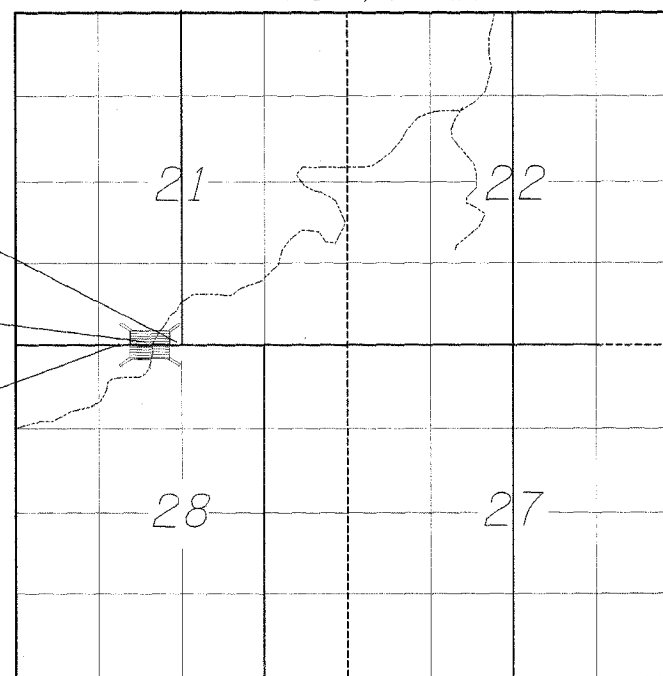
R 13 W, 2nd P.M.



IMPROVEMENT ENDS
11+50.00

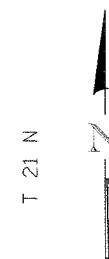
PROPOSED STRUCTURE NO. 092-3483,
STA. 10+00, PRECAST PRESTRESSED CONC.
BRIDGE SINGLE SPAN 73'-3 3/8". SKEW LT.
28°, 27'-0" OUT TO OUT OF DECK

IMPROVEMENT BEGINS
8+50.00



LOCATION MAP

NET LENGTH OF SECTION = 300 FEET = 0.06 MILES
FUNCTIONAL CLASSIFICATION - LOCAL ROAD
DESIGN ADT = 150



Keith E. Brandau 10/15/04
KEITH E. BRANDAU
Illinois Licensed Professional Engineer Number 44096
License Expires 11/30/05

APPROVED 10-27-04
Ray Knight
ROAD DISTRICT COMMISSIONER

APPROVED 10/27/04
Robert B. Andrews
COUNTY ENGINEER

PASSED 11/8-20-04
Daniel H. Hill
DISTRICT ENGINEER OF LOCAL ROADS & STREETS

APPROVED Nov 9 20 04
[Signature]
DISTRICT ENGINEER

STATE OF ILLINOIS
DEPARTMENT OF TRANSPORTATION

CONTRACT # 91324

FOR JOINT UTILITY INFORMATION
CALL TOLL FREE 1-800-892-0123

FRAUENHÖFFER

Frauenhoffer and Associates, P.C. Consulting Engineers
3002 Crossing Court Champaign, IL 61822 217-351-6268