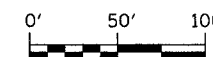


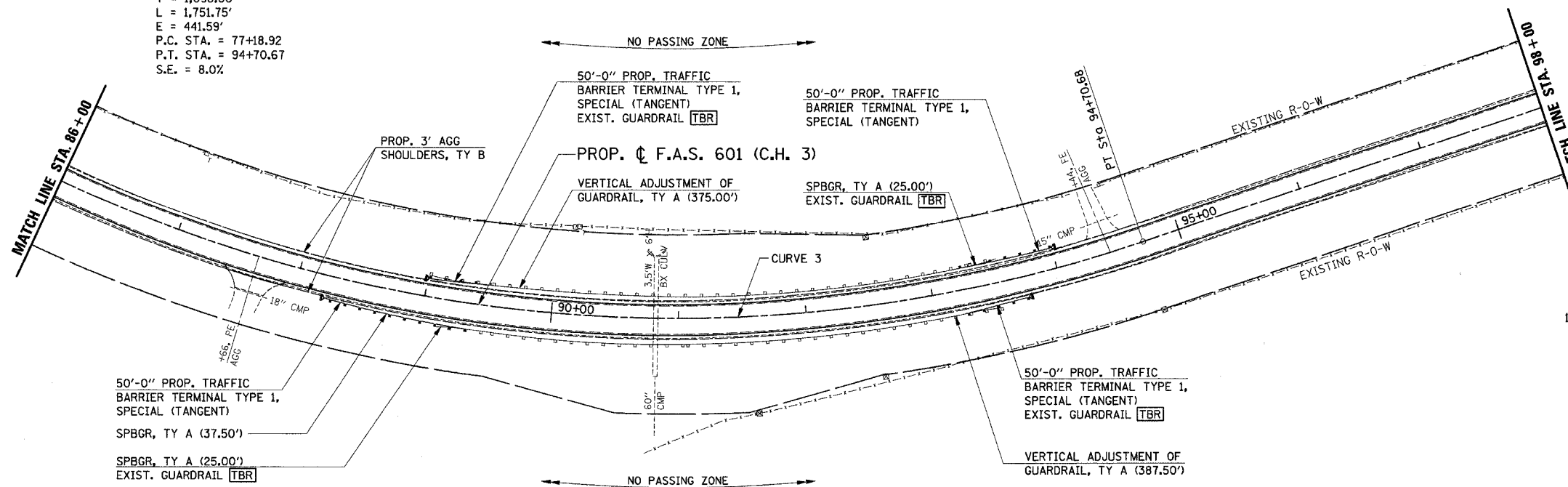
F.A.S. RTE.	SECTION	COUNTY	TOTAL SHEETS	SHEET NO.
601	(*)	PIKE	51	20
STA. 86+00		TO STA. 98+00		
FED. ROAD DIST. NO.		ILLINOIS FED. AID PROJECT		

(*) 02-00077-00-RS

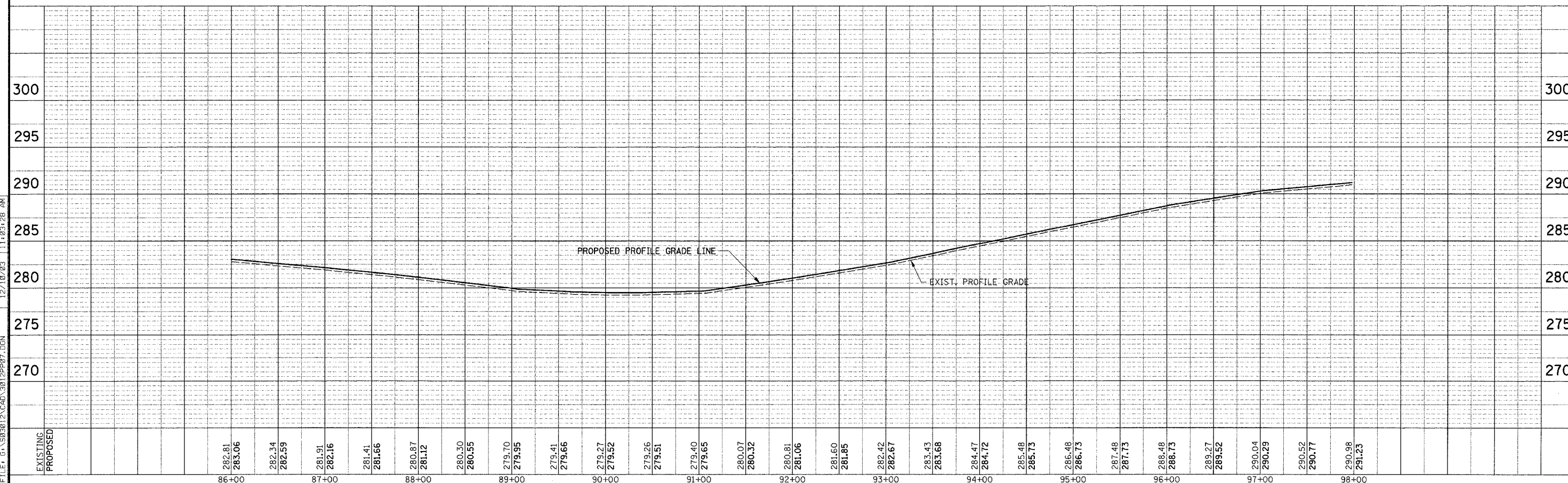


PROP. CURVE 3

PI STA. = 88+17.58
 $\Delta = 87^\circ 35' 14''$ (LT)
 $D = 5^\circ 00' 00''$
 $R = 1,145.92'$
 $T = 1,098.66'$
 $L = 1,751.75'$
 $E = 441.59'$
 P.C. STA. = 77+18.92
 P.T. STA. = 94+70.67
 S.E. = 8.0%



NOTE:
 1. SEE "SCHEDULE OF QUANTITIES" FOR GUARDRAIL LOCATIONS.



FILE: G:\NS0201\2\CAD\3012P207.DGN 12/10/03 11:03:28 AM