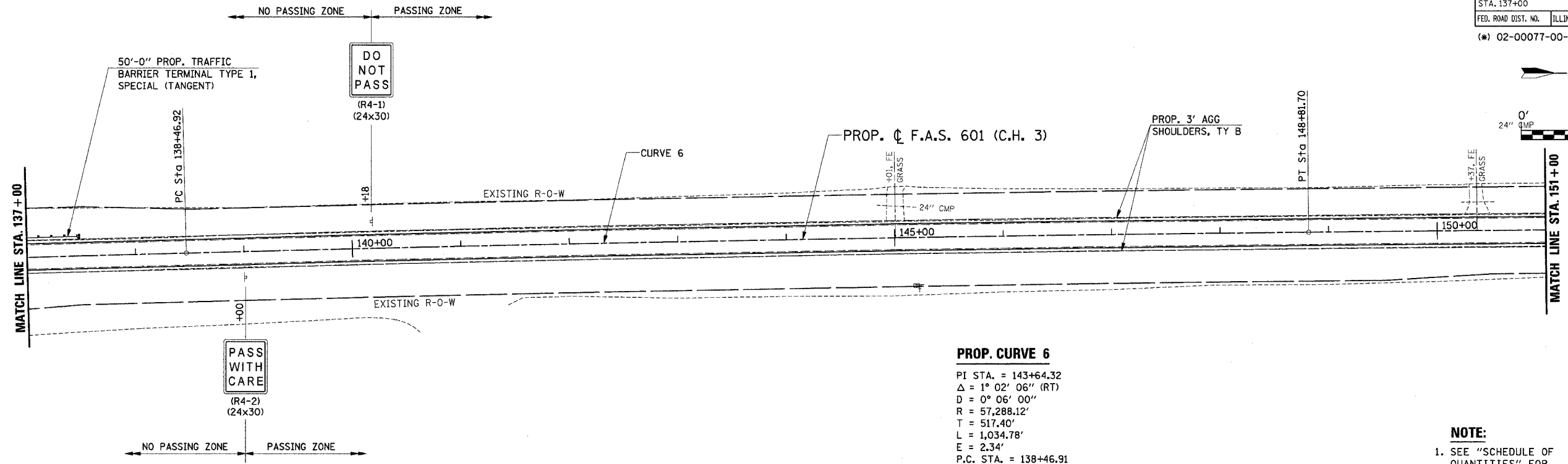
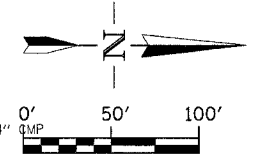


F.A.S. RTE.	SECTION	COUNTY	TOTAL SHEETS	SHEET NO.
601	(*)	PIKE	51	25
STA. 137+00		TO STA. 151+00		
FED. ROAD DIST. NO.		ILLINOIS	FED. AID PROJECT	

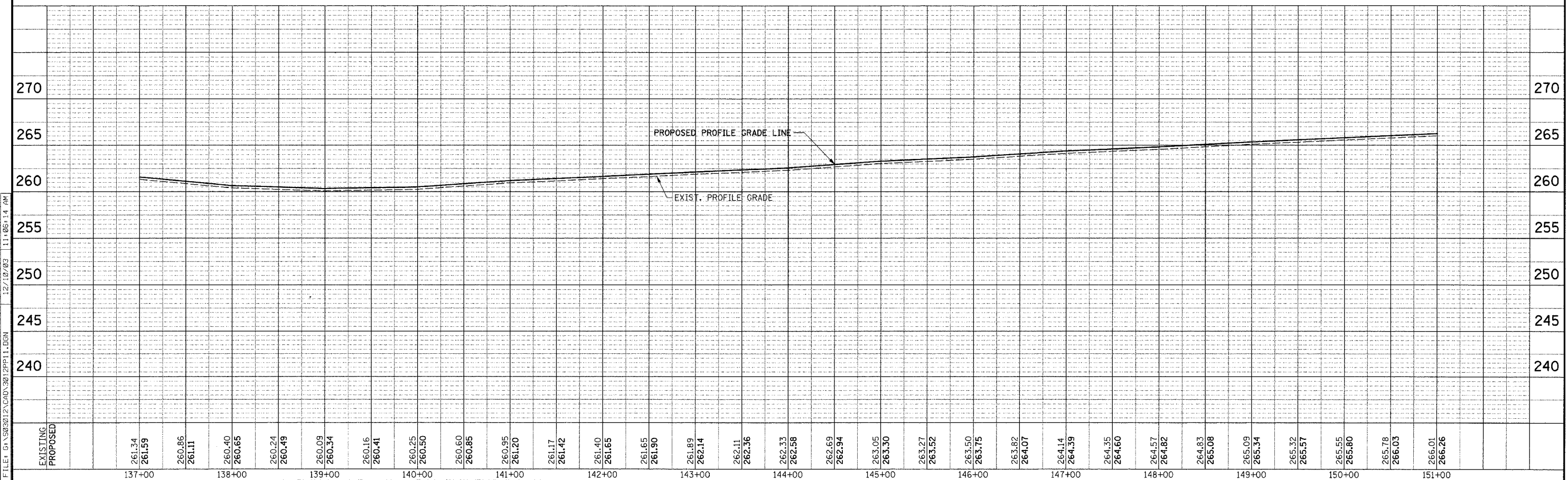
(*) 02-00077-00-RS



PROP. CURVE 6

PI STA. = 143+64.32
 Δ = 1° 02' 06" (RT)
 D = 0° 06' 00"
 R = 57,288.12'
 T = 517.40'
 L = 1,034.78'
 E = 2.34'
 P.C. STA. = 138+46.91
 P.T. STA. = 148+81.69
 NORMAL CROWN

NOTE:
 1. SEE "SCHEDULE OF QUANTITIES" FOR GUARDRAIL LOCATIONS.



FILE: G:\NS02012\CAD\301\301.PP1 1.DGN
 12/10/03 11:06:14 AM

EXISTING	PROPOSED	137+00	138+00	139+00	140+00	141+00	142+00	143+00	144+00	145+00	146+00	147+00	148+00	149+00	150+00	151+00
261.34	261.59															
260.86	261.11															
260.40	260.65															
260.24	260.49															
260.09	260.34															
260.16	260.41															
260.25	260.50															
260.60	260.85															
260.95	261.20															
261.17	261.42															
261.40	261.65															
261.65	261.90															
261.89	262.14															
262.11	262.36															
262.33	262.58															
262.69	262.94															
263.05	263.30															
263.27	263.52															
263.50	263.75															
263.82	264.07															
264.14	264.39															
264.35	264.60															
264.57	264.82															
264.83	265.08															
265.09	265.34															
265.32	265.57															
265.55	265.80															
265.78	266.03															
266.01	266.26															