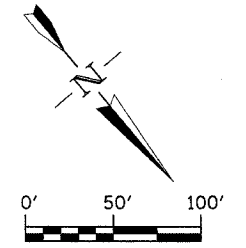


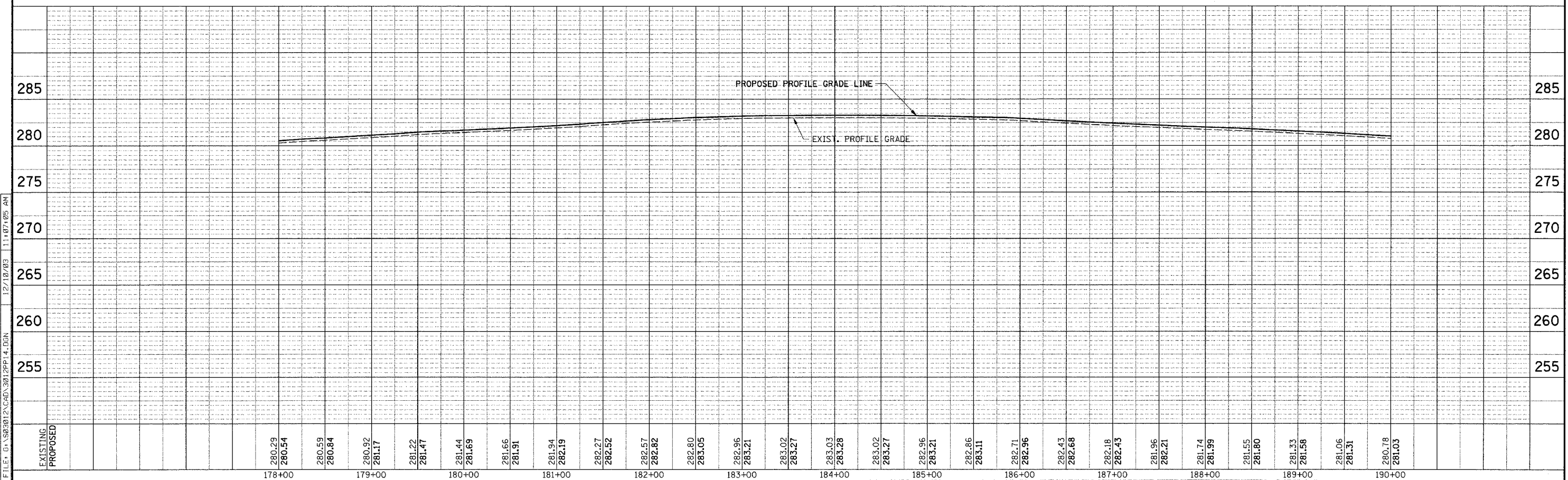
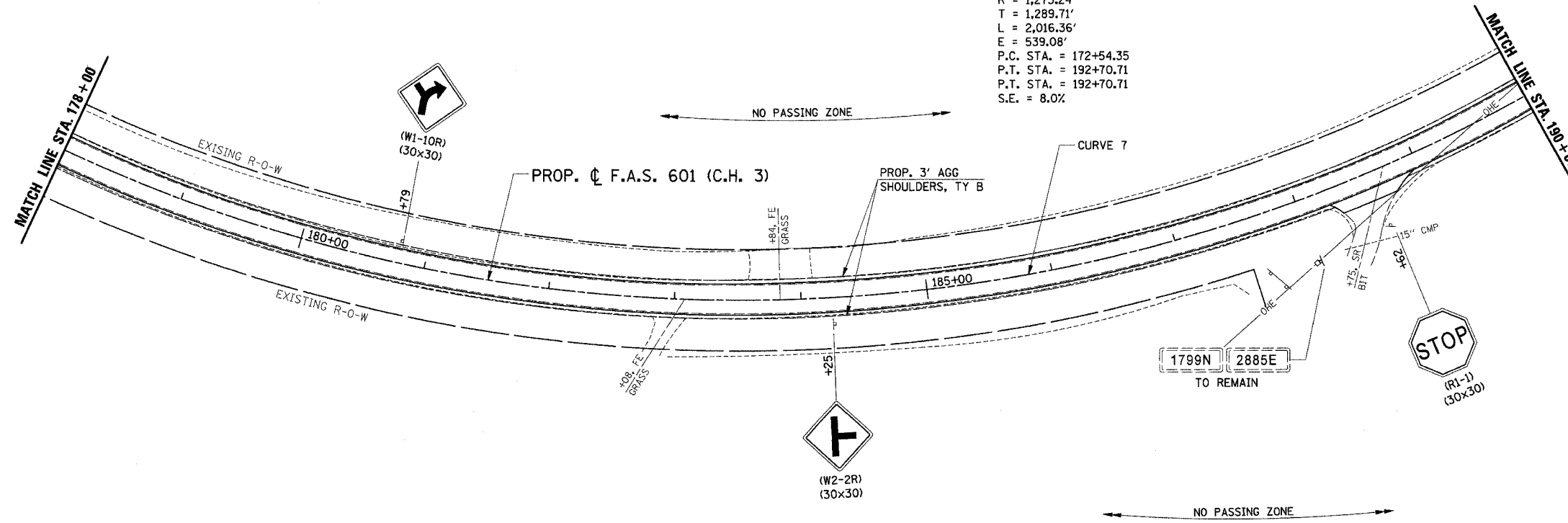
F.A.S. RTE.	SECTION	COUNTY	TOTAL SHEETS	SHEET NO.
601	(*)	PIKE	51	28
STA. 178+00		TO STA. 190+00		
FED. ROAD DIST. NO.	ILLINOIS	FED. AID PROJECT		

(\*) 02-00077-00-RS



**PROP. CURVE 7**

PI STA. = 185+44.06  
 $\Delta = 90^\circ 44' 11''$  (LT)  
 $D = 4^\circ 30' 00''$   
 $R = 1,273.24'$   
 $T = 1,289.71'$   
 $L = 2,016.36'$   
 $E = 539.08'$   
 P.C. STA. = 172+54.35  
 P.T. STA. = 192+70.71  
 S.E. = 8.0%



FILE: G:\S023012\CAD\3012PP14.DGN 12/10/03 11:07:05 AM

EXISTING	PROPOSED	178+00	179+00	180+00	181+00	182+00	183+00	184+00	185+00	186+00	187+00	188+00	189+00	190+00
280.29	280.54													
280.59	280.84													
280.92	281.17													
281.22	281.47													
281.44	281.69													
281.66	281.91													
281.94	282.19													
282.27	282.52													
282.57	282.82													
282.80	283.05													
282.96	283.21													
283.02	283.27													
283.03	283.28													
283.02	283.27													
282.96	283.21													
282.86	283.11													
282.71	282.96													
282.43	282.68													
282.18	282.43													
281.96	282.21													
281.74	281.99													
281.55	281.80													
281.33	281.58													
281.06	281.31													
280.78	281.03													