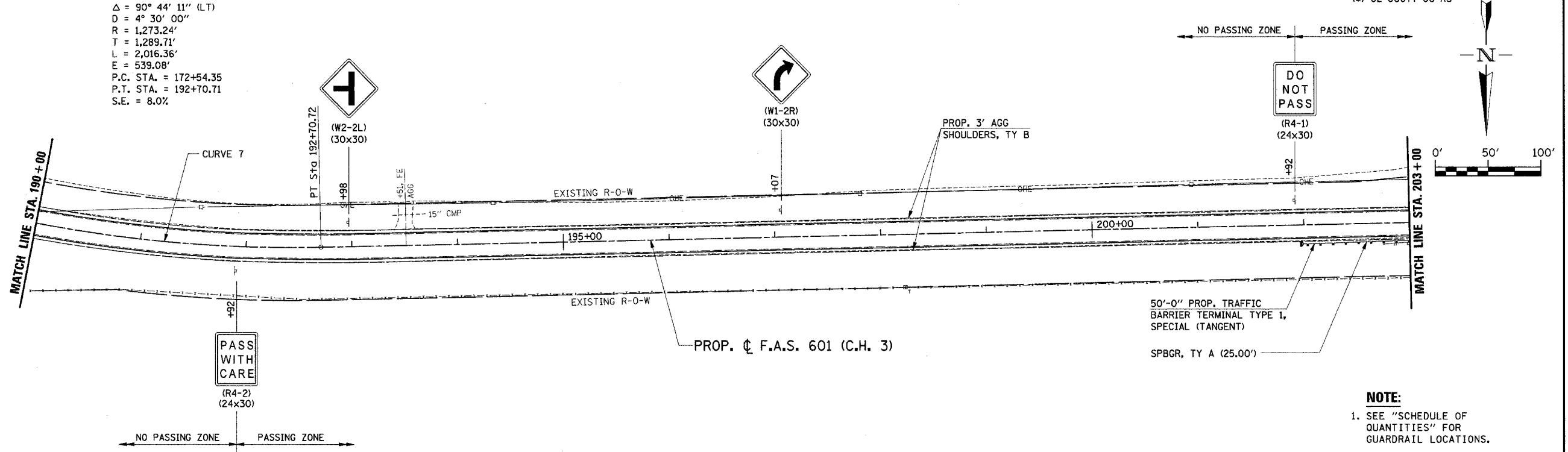


F.A.S. RTE.	SECTION	COUNTY	TOTAL SHEETS	SHEET NO.
601	(*)	PIKE	51	29
STA. 190+00		TO STA. 203+00		
FED. ROAD DIST. NO.		ILLINOIS FED. AID PROJECT		

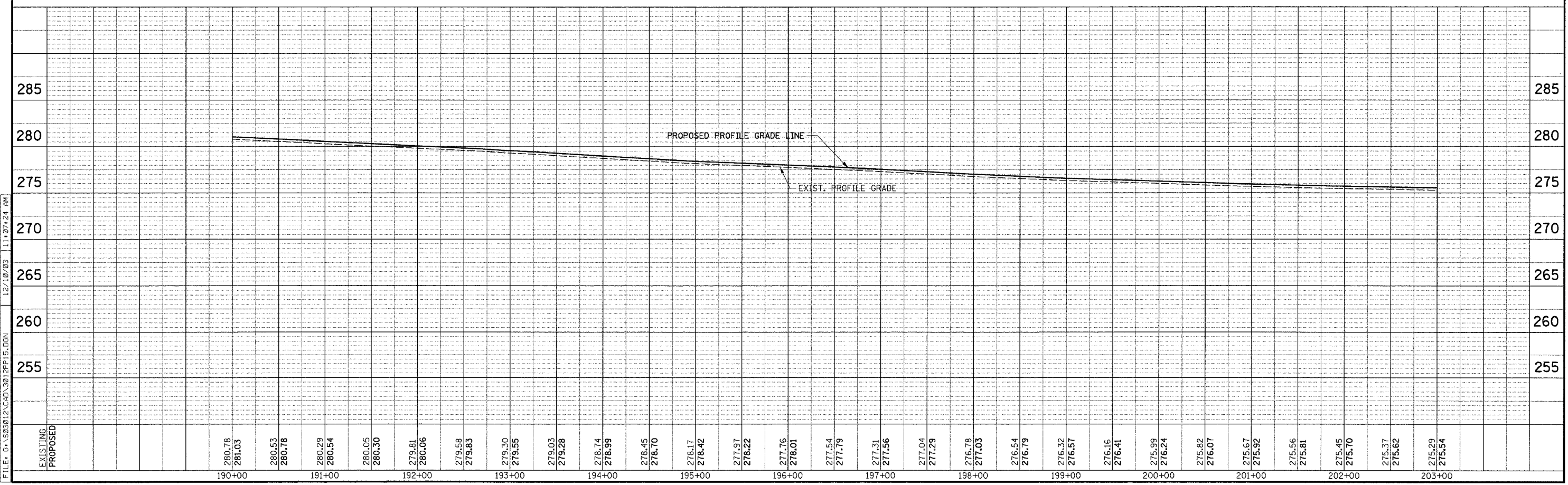
(*) 02-00077-00-RS

PROP. CURVE 7

PI STA. = 185+44.06
 $\Delta = 90^\circ 44' 11''$ (LT)
 $D = 4^\circ 30' 00''$
 $R = 1,273.24'$
 $T = 1,289.71'$
 $L = 2,016.36'$
 $E = 539.08'$
 P.C. STA. = 172+54.35
 P.T. STA. = 192+70.71
 S.E. = 8.0%



NOTE:
 1. SEE "SCHEDULE OF QUANTITIES" FOR GUARDRAIL LOCATIONS.



PLAN AND PROFILE - STA. 190+00 TO STA. 203+00

FILE: G:\503021\2\CAD\3012PFI5.DGN 12/10/03 11:07:24 AM