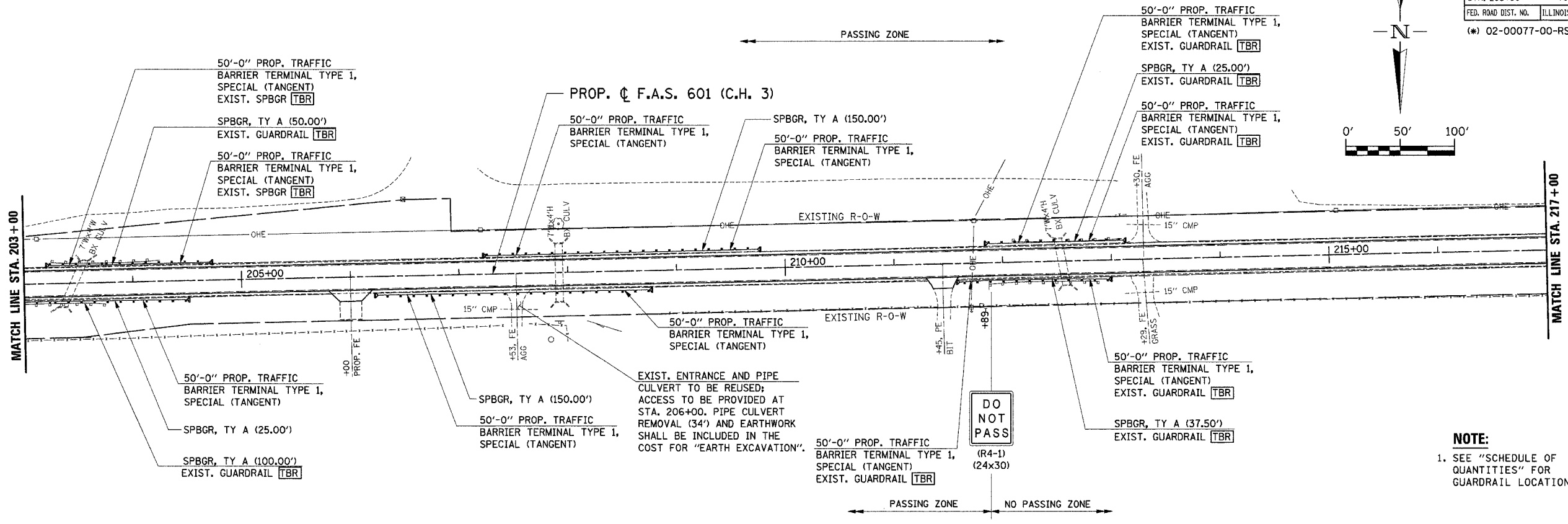
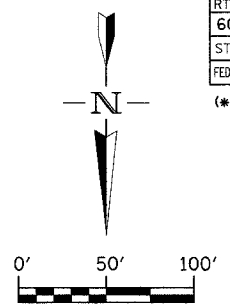
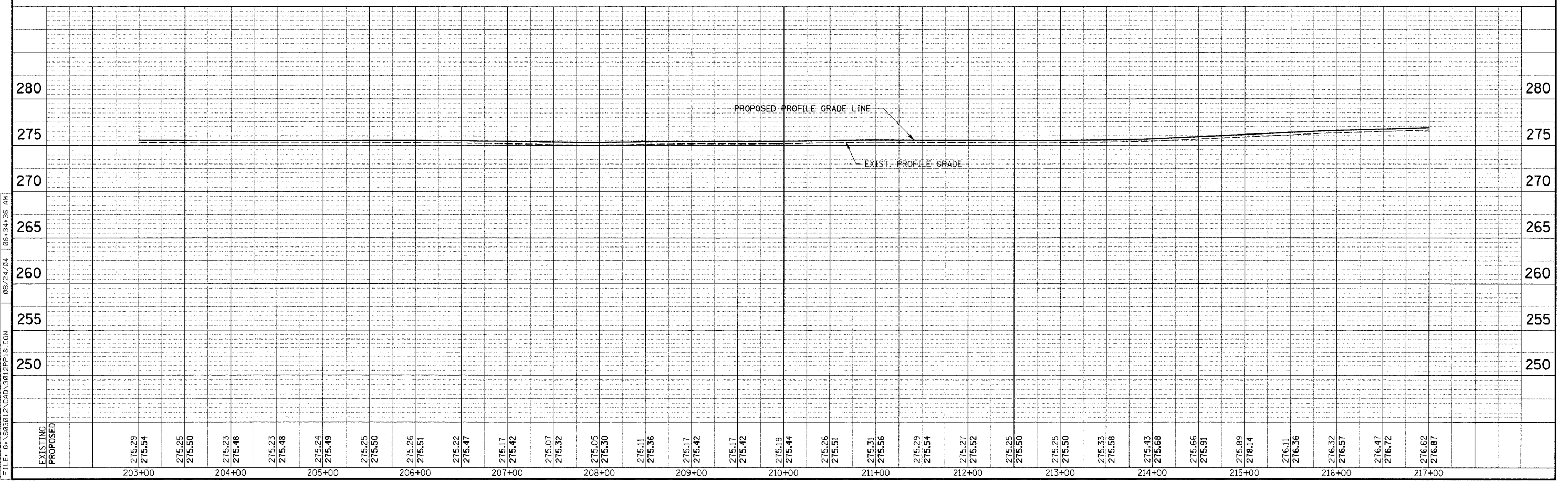


F.A.S. RTE.	SECTION	COUNTY	TOTAL SHEETS	SHEET NO.
601	(*)	PIKE	51	30
STA. 203+00		TO STA. 217+00		
FED. ROAD DIST. NO.		ILLINOIS FED. AID PROJECT		
(*) 02-00077-00-RS				



NOTE:
1. SEE "SCHEDULE OF QUANTITIES" FOR GUARDRAIL LOCATIONS.



FILE: G:\S030012\CAD\9012P16.DGN
 08/24/04 06:34:36 AM

PLAN AND PROFILE - STA. 203+00 TO STA. 217+00