

F.A.S. ROUTE NO.	SECTION	COUNTY	TOTAL SHEETS	SHEET NO.
735	*	MACOUPIN	58	1

* 92-00068-01-FP

**STATE OF ILLINOIS
DEPARTMENT OF TRANSPORTATION
DIVISION OF HIGHWAYS
FEDERAL AID HIGHWAY**

**SURFACE TRANSPORTATION / RURAL PROGRAM
F.A.S. ROUTE NO. 735 SHIPMAN CUTOFF ROAD (C.H. 57)
SECTION 92-00068-01-FP
PROJECT RS-735 (111)
MACOUPIN COUNTY
JOB C-96-212-02**

FOR UTILITY LOCATION PURPOSES, THIS PROJECT IS LOCATED IN SECTION 1 OF TOWNSHIP 7 NORTH, RANGE 9 WEST AND SECTIONS 25, 36 AND THE SOUTH HALF OF SECTION 24 OF TOWNSHIP 8 NORTH, RANGE 9 WEST OF THE THIRD PRINCIPAL MERIDIAN.

AGENCIES KNOWN TO HAVE UNDERGROUND FACILITIES WITHIN THE LIMITS OF THIS IMPROVEMENT ARE SHOWN BELOW (MEMBERS OF JULIE, PHONE (800) 892-0123, ARE INDICATED BY *).

LEVEL 3 COMMUNICATIONS
1015 LOCUST ST., 3RD FLOOR
ST. LOUIS, MO 63101
(720) 480-3364

* FRONTIER COMMUNICATIONS
225 N. BROAD
CARLINVILLE, IL 62626
(618) 498-1700
(800) 533-3235

360 NETWORKS
1209 E. NICHOLAS ST.
CARLINVILLE, IL 62626
(720) 480-2533

* VILLAGE OF SHIPMAN
SHIPMAN, IL 62685
(618) 836-7114

* JERSEY COUNTY RURAL WATER CO.
1009 EAST SHIPMAN ROAD
JERSEYVILLE, IL 62052
(618) 488-9534

MJM ELECTRIC COOPERATIVE, INC.
264 NORTH EAST STREET
P.O. BOX 80
CARLINVILLE, IL 62626
(217) 854-3137

AMEREN CIPS
200 EAST SPRUCE
JERSEYVILLE, IL 62052
(618) 498-5112 EXT. 82411

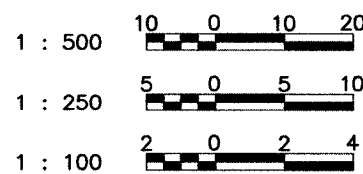
INDEX TO SHEETS

1. COVER SHEET
2. LEGEND, NOTES AND SUMMARY OF QUANTITIES
3. TYPICAL SECTIONS
4. ENTRANCE DETAILS AND SCHEDULE
5. MISCELLANEOUS SCHEDULES
6. DETOUR PLAN
7. TRAFFIC CONTROL PLAN
8. SURVEY REFERENCE POINTS
- 9.-24. PLAN AND PROFILE SHEETS
25. REMOVAL ITEMS
26. INTERSECTION DETAILS
27. STORM SEWER OUTLET PLAN & PROFILE
28. PAVEMENT MARKING PLAN
29. EROSION CONTROL SCHEDULES
30. RIPRAP DETAILS
31. SPECIAL INLET AND MANHOLE DETAILS
- 32.-54. CROSS SECTIONS - FAS ROUTE 735
- 55.-57. CROSS SECTIONS - SIDE ROADS
58. CROSS SECTIONS - IL ROUTE 16

HIGHWAY STANDARDS

280001-02	604001-02	701006-02
420001-05	604011-02	701011-01
424001-03	604036-01	701301-02
442201-01	604066-01	701311-02
542301	606001-02	701501-03
542306	606301-02	701801-03
542311	630001-05	702001-05
601101	630301-03	720001
602301	631011-02	720006
602306	635006-02	780001-01
602401	664001-01	BLR-21-6
602601	665001-01	BLR-22-4
602701	666001	BLR-24-1

SCALES



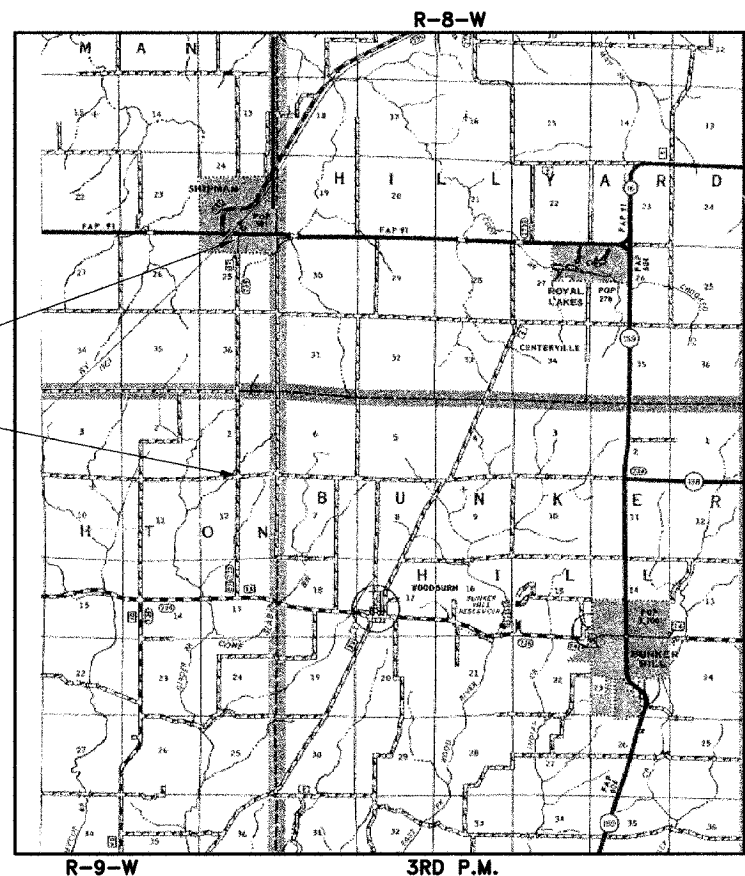
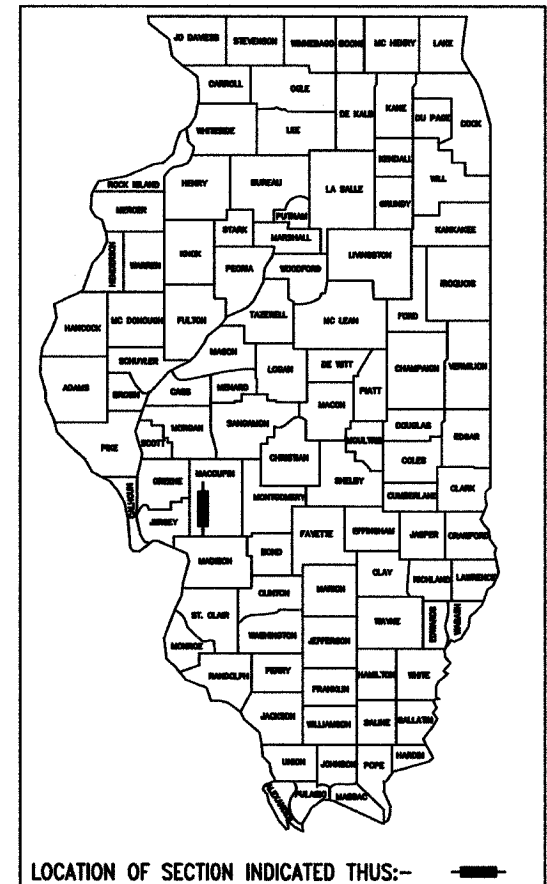
FULL SIZE PLANS HAVE BEEN PREPARED USING STANDARD ENGINEERING SCALES. REDUCED SIZED PLANS WILL NOT CONFORM TO STANDARD SCALES. IN MAKING MEASUREMENTS ON REDUCED PLANS THE ABOVE SCALES MAY BE USED.

DESIGN DESIGNATION - RURAL COLLECTOR DHV = 157 (18)

DESIGN SPEED = 90 km/h

CONTRACT NO. **93387**

FAS735CV.DWG



LOCATION MAP

SCALE



NET LENGTH OF PROJECT = 4,940.208 m/4.940 km



Sheppard Morgan & Schwaab, Inc.
CONSULTING ENGINEERS & LAND SURVEYORS

215 Market Street
Alton, Illinois 62002
P.O. Box 2
618/482-9755

10 Central Industrial Dr
Northgate Center
Granite City, IL 62040
618/877-8700

DESCRIPTION OF WORK:

The proposed work consists of the reconstruction of the existing roadway including earth excavation, embankment, aggregate base course and bituminous surface treatment (in preparation for Stage II, Final Bituminous Concrete Pavement), bituminous concrete paving, concrete curb and gutters, concrete sidewalks, a precast concrete box culvert, pipe culverts, storm sewers, inlets, manholes and other miscellaneous items of construction.

APPROVED 10/12 2004
Thomas A. Reinhart
COUNTY ENGINEER

PASSED Oct. 20 2004
William E. Masters, III
DISTRICT ENGINEER / LOCAL ROADS & STREETS

W.R. Jones
DISTRICT CONSTRUCTION ENGINEER

APPROVED OCTOBER 27 2004
Christi M. Reed
DISTRICT ENGINEER

STATE OF ILLINOIS
DEPARTMENT OF TRANSPORTATION



David E. Jordan

DATE SIGNED 10-5-04
EXPIRATION DATE 11-30-05