

REVISIONS

Sheppard Morgan & Schwaab, Inc.
CONSULTING ENGINEERS & LAND SURVEYORS
10 Central Industrial Dr
Granite City, IL 60040
618/977-9700

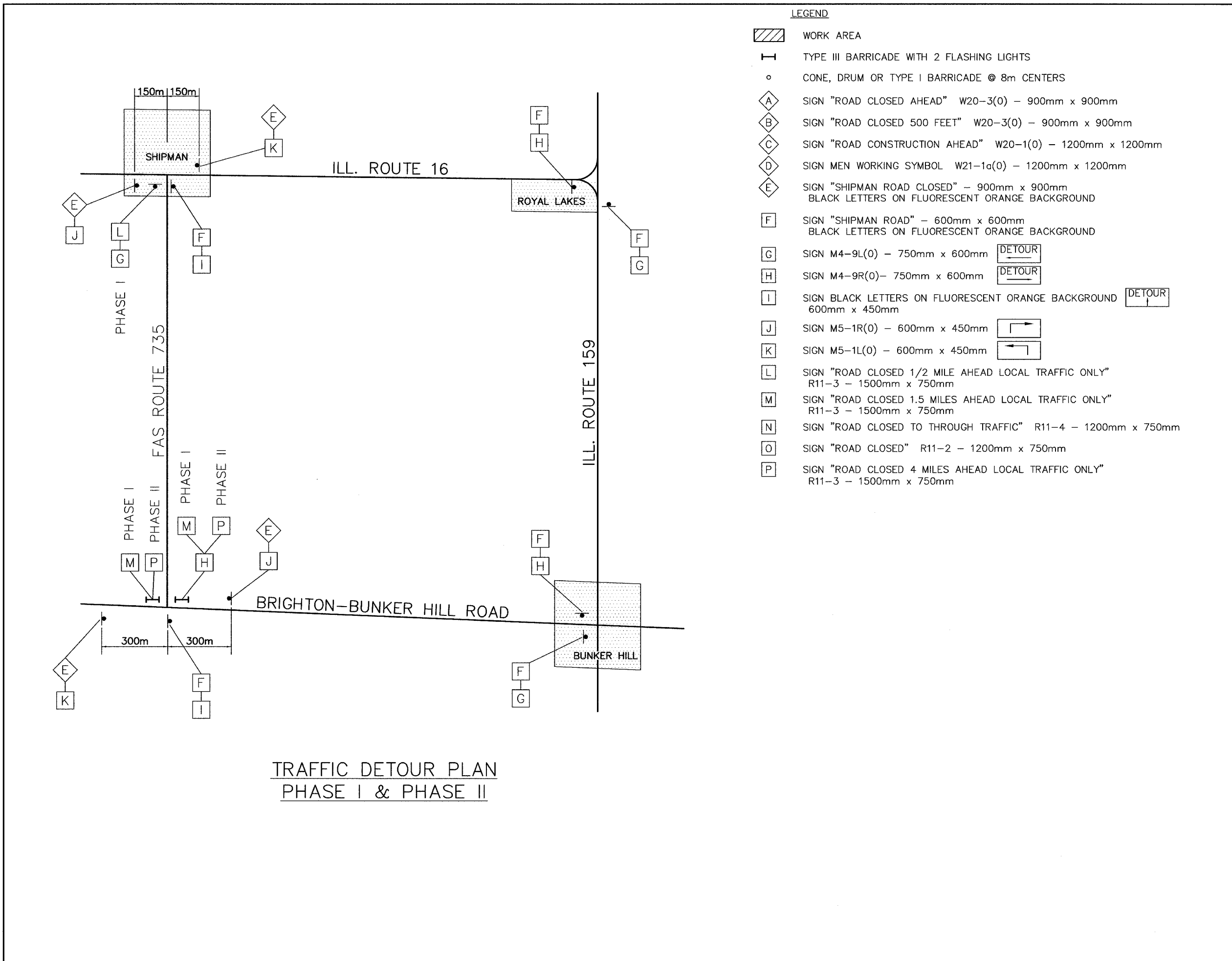


MACOUPIN COUNTY, ILLINOIS
SECTION 92-00068-01-FP
FAS ROUTE 735 (SHIPMAN ROAD)
DETOUR PLAN

DWG. NO.
735TRCON .DWG ACAD
COGO FILE
REF. BK. FAS RTE. 735
JOB NO. 455048
DSN. BY: DEG
DWN. BY: CAD
CHK. BY: DEG
DATE: OCTOBER, 2004
SCALE: NOT TO SCALE
SHEET 6 OF 58

LEGEND

- WORK AREA
- TYPE III BARRICADE WITH 2 FLASHING LIGHTS
- CONE, DRUM OR TYPE I BARRICADE @ 8m CENTERS
- SIGN "ROAD CLOSED AHEAD" W20-3(0) - 900mm x 900mm
- SIGN "ROAD CLOSED 500 FEET" W20-3(0) - 900mm x 900mm
- SIGN "ROAD CONSTRUCTION AHEAD" W20-1(0) - 1200mm x 1200mm
- SIGN MEN WORKING SYMBOL W21-1a(0) - 1200mm x 1200mm
- SIGN "SHIPMAN ROAD CLOSED" - 900mm x 900mm
BLACK LETTERS ON FLUORESCENT ORANGE BACKGROUND
- SIGN "SHIPMAN ROAD" - 600mm x 600mm
BLACK LETTERS ON FLUORESCENT ORANGE BACKGROUND
- SIGN M4-9L(0) - 750mm x 600mm DETOUR
- SIGN M4-9R(0) - 750mm x 600mm DETOUR
- SIGN BLACK LETTERS ON FLUORESCENT ORANGE BACKGROUND
600mm x 450mm DETOUR
- SIGN M5-1R(0) - 600mm x 450mm
- SIGN M5-1L(0) - 600mm x 450mm
- SIGN "ROAD CLOSED 1/2 MILE AHEAD LOCAL TRAFFIC ONLY"
R11-3 - 1500mm x 750mm
- SIGN "ROAD CLOSED 1.5 MILES AHEAD LOCAL TRAFFIC ONLY"
R11-3 - 1500mm x 750mm
- SIGN "ROAD CLOSED TO THROUGH TRAFFIC" R11-4 - 1200mm x 750mm
- SIGN "ROAD CLOSED" R11-2 - 1200mm x 750mm
- SIGN "ROAD CLOSED 4 MILES AHEAD LOCAL TRAFFIC ONLY"
R11-3 - 1500mm x 750mm



TRAFFIC DETOUR PLAN
PHASE I & PHASE II