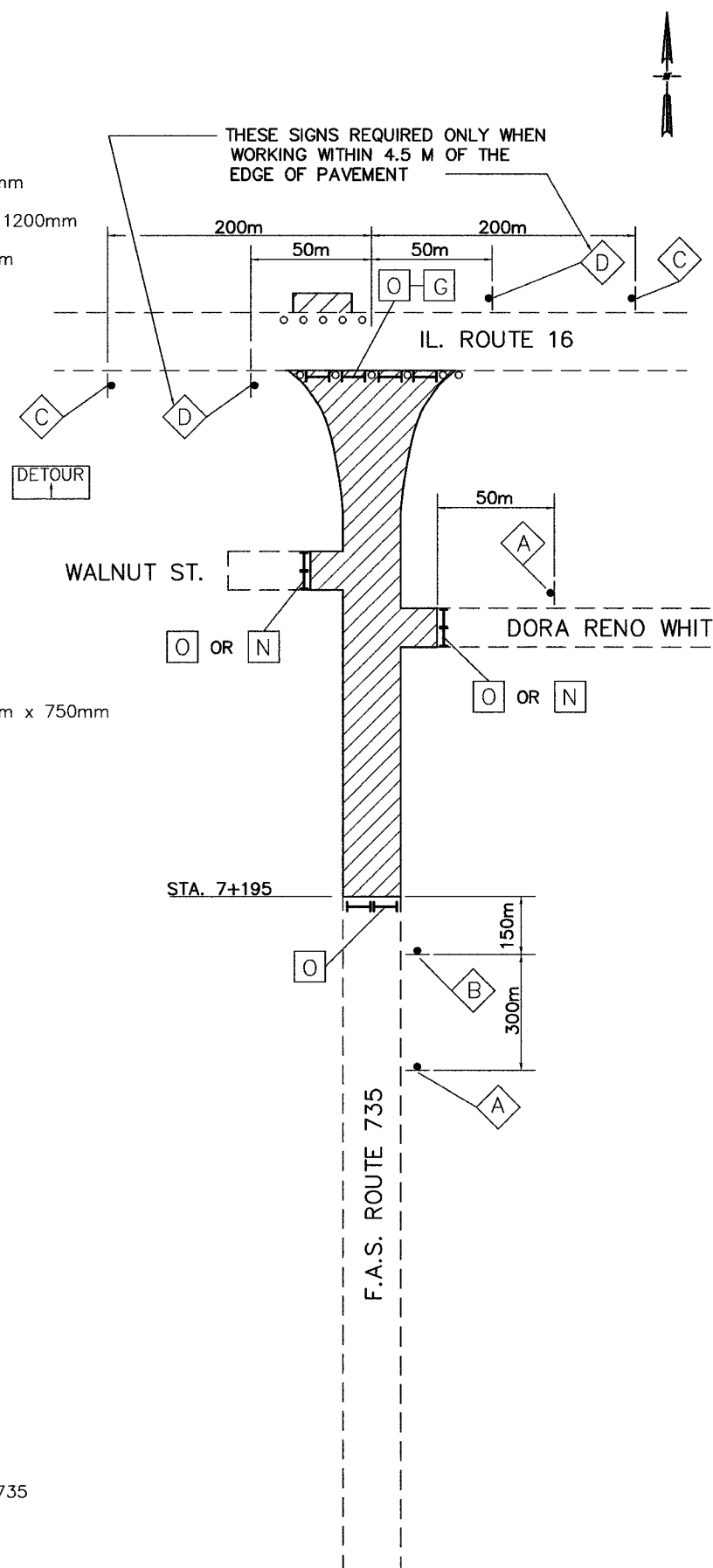


- LEGEND**
- WORK AREA
 - TYPE III BARRICADE WITH 2 FLASHING LIGHTS
 - CONE, DRUM OR TYPE I BARRICADE @ 8m CENTERS
 - SIGN "ROAD CLOSED AHEAD" W20-3(0) - 900mm x 900mm
 - SIGN "ROAD CLOSED 500 FEET" W20-3(0) - 900mm x 900mm
 - SIGN "ROAD CONSTRUCTION AHEAD" W20-1(0) - 1200mm x 1200mm
 - SIGN MEN WORKING SYMBOL W21-1a(0) - 1200mm x 1200mm
 - SIGN "SHIPMAN ROAD CLOSED" - 900mm x 900mm
BLACK LETTERS ON FLUORESCENT ORANGE BACKGROUND
 - SIGN "SHIPMAN ROAD" - 600mm x 600mm
BLACK LETTERS ON FLUORESCENT ORANGE BACKGROUND
 - SIGN M4-9L(0) - 750mm x 600mm DETOUR
 - SIGN M4-9R(0) - 750mm x 600mm DETOUR
 - SIGN BLACK LETTERS ON FLUORESCENT ORANGE BACKGROUND
600mm x 450mm
 - SIGN M5-1R(0) - 600mm x 450mm
 - SIGN M5-1L(0) - 600mm x 450mm
 - SIGN "ROAD CLOSED 1/2 MILE AHEAD LOCAL TRAFFIC ONLY"
R11-3 - 1500mm x 750mm
 - SIGN "ROAD CLOSED 1.5 MILES AHEAD LOCAL TRAFFIC ONLY"
R11-3 - 1500mm x 750mm
 - SIGN "ROAD CLOSED TO THROUGH TRAFFIC" R11-4 - 1200mm x 750mm
 - SIGN "ROAD CLOSED" R11-2 - 1200mm x 750mm
 - SIGN "ROAD CLOSED 4 MILES AHEAD LOCAL TRAFFIC ONLY"
R11-3 - 1500mm x 750mm

GENERAL NOTES

1. DURING PHASE I, THE CONTRACTOR SHALL MAINTAIN ACCESS TO THE ADJACENT HOMES THROUGHOUT THE WORK ZONE AT ALL TIMES.
2. AT TIMES DURING PHASE II WHEN CONSTRUCTION OPERATIONS ENCROACH ON IL. ROUTE 16, IL. ROUTE 16 SHALL REMAIN OPEN TO A MINIMUM OF ONE LANE. ADDITIONAL TRAFFIC CONTROL SHALL BE REQUIRED IN ACCORDANCE WITH HIGHWAY STANDARD 701501.
3. AT TIMES DURING PHASE II WHEN CONSTRUCTION OPERATIONS ENCROACH ON SIDEWALKS ADJACENT TO ILLINOIS ROUTE 16, PEDESTRIAN TRAFFIC CONTROL SHALL BE REQUIRED IN ACCORDANCE WITH HIGHWAY STANDARD 701801.
4. DURING PHASE II, FAS ROUTE 735 SHALL REMAIN OPEN TO LOCAL TRAFFIC DURING STORM SEWER WORK, SIDEWALK CONSTRUCTION AND OTHER MINOR CONSTRUCTION BY STAGGERING THE TYPE III BARRICADES AT WALNUT ST. AND DORA RENO WHITE. FAS ROUTE 735 SHALL BE CLOSED TO ALL TRAFFIC AS NEEDED FOR CURB AND GUTTER AND PAVEMENT WORK.
5. ALL HAZARDS WITHIN THE WORK ZONE SHALL BE PROTECTED WITH TYPE I BARRICADES WITH FLASHING LIGHTS AS DIRECTED BY THE ENGINEER.
6. IF AT ANY TIME DURING THE CONSTRUCTION OF THIS PROJECT WORK OCCURS ON OR ADJACENT TO A SECTION OF FAS ROUTE 735 THAT IS OPENED TO TRAFFIC, ADDITIONAL TRAFFIC CONTROL SHALL BE PROVIDED IN ACCORDANCE WITH HIGHWAY STANDARD 701006, 701011 OR 701301.
7. ALL CONSTRUCTION SIGNS SHALL MEET THE REQUIREMENTS OF THE LATEST EDITION OF THE "MANUAL ON UNIFORM TRAFFIC CONTROL DEVICES FOR STREETS AND HIGHWAYS".



REVISIONS

Sheppard Morgan & Schwab, Inc.
CONSULTING ENGINEERS & LAND SURVEYORS



MACOUPIN COUNTY, ILLINOIS
SECTION 92-00068-010FF
FAS ROUTE 735 (SHIPMAN ROAD)
TRAFFIC CONTROL PLAN

DWG. NO. 735TRCON_DWG ACAD
COGO FILE --
REF. BK. FAS RTE. 735
JOB NO. 455048
DSN. BY: DEG
DWN. BY: CAD
CHK. BY: DEG
DATE: OCTOBER, 2004
SCALE: NOT TO SCALE
SHEET 7 OF 58