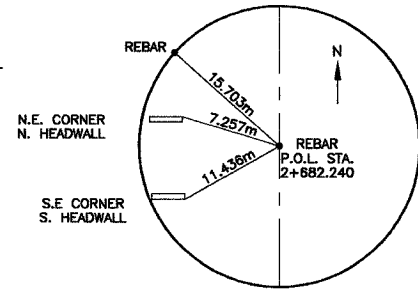
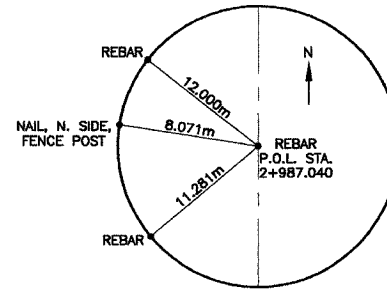


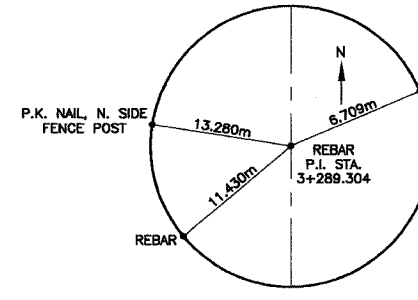
CENTERLINE
P.O.L. STA. 2+464.345



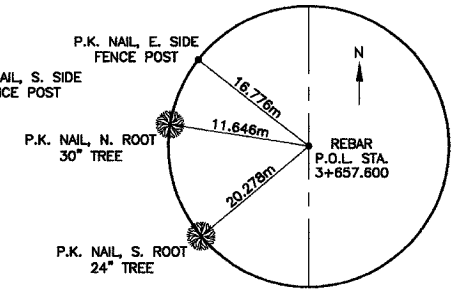
CENTERLINE
P.O.L. STA. 2+682.240



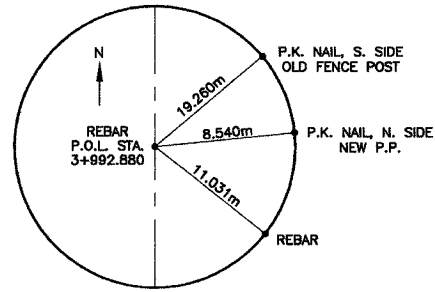
CENTERLINE
P.O.L. STA. 2+987.040



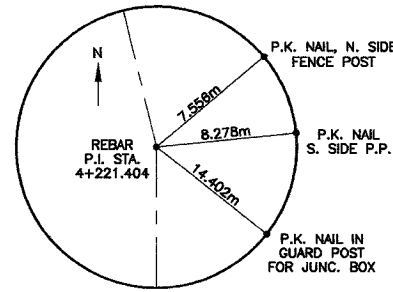
CENTERLINE
P.I. STA. 3+289.304



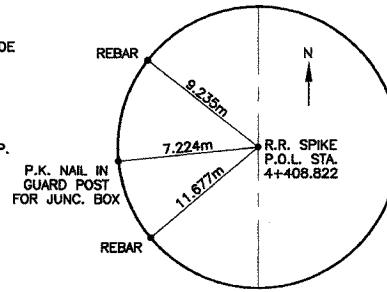
CENTERLINE
P.O.L. STA. 3+657.600



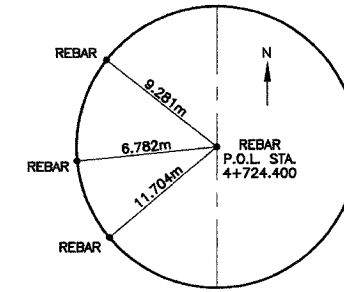
CENTERLINE
P.O.L. STA. 3+992.880



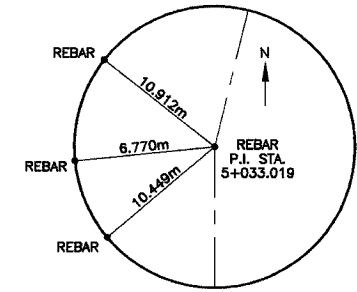
CENTERLINE
P.I. STA. 4+221.404



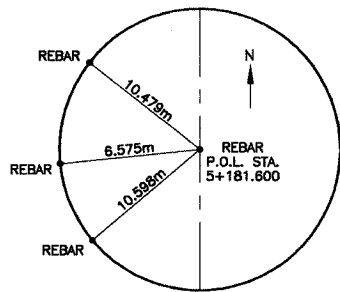
CENTERLINE
P.O.L. STA. 4+408.822



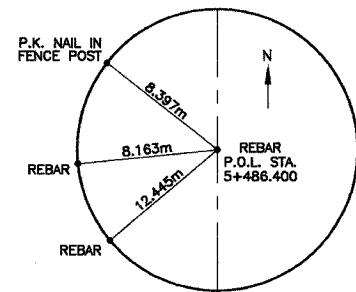
CENTERLINE
P.O.L. STA. 4+724.400



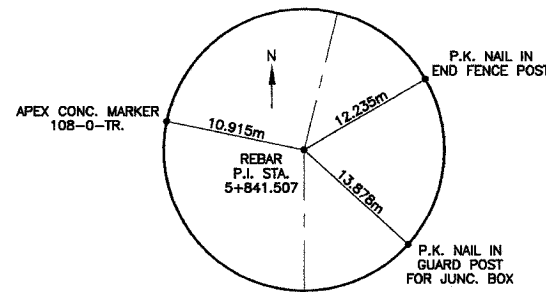
CENTERLINE
P.I. STA. 5+033.019



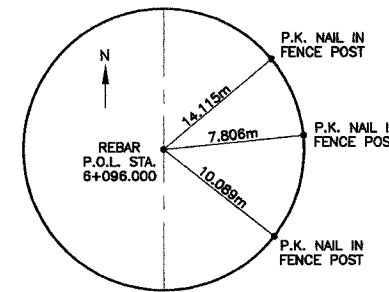
CENTERLINE
P.O.L. STA. 5+181.600



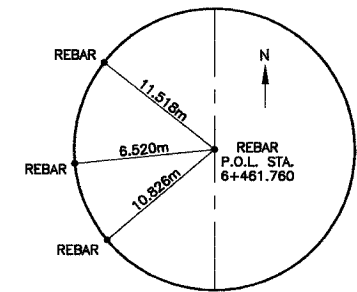
CENTERLINE
P.O.L. STA. 5+486.400



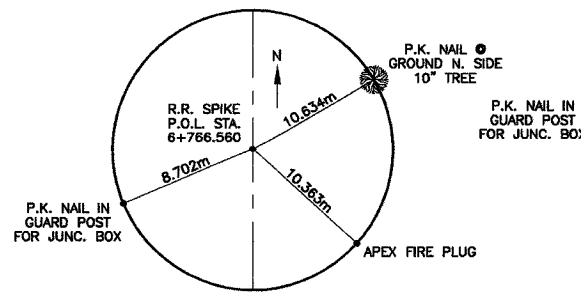
CENTERLINE
P.I. STA. 5+841.507



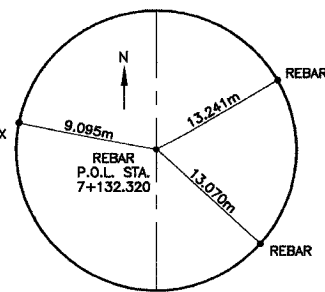
CENTERLINE
P.O.L. STA. 6+096.000



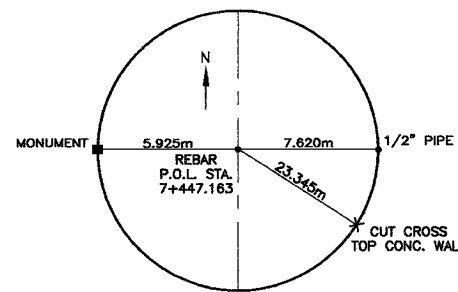
CENTERLINE
P.O.L. STA. 6+461.760



CENTERLINE
P.O.L. STA. 6+766.560



CENTERLINE
P.O.L. STA. 7+132.320



CENTERLINE
P.O.L. STA. 7+447.163

| NO. | DESCRIPTION |
|-----|-------------|
| | |
| | |
| | |
| | |
| | |
| | |
| | |
| | |
| | |

Sheppard Morgan & Schwaab, Inc.
 CONSULTING ENGINEERS & LAND SURVEYORS
 10 Central Industrial Dr
 Granite City, IL 62040
 618/977-8700
 216 Market Street
 Granite City, IL 62040
 618/977-8795

MACOUPIN COUNTY, ILLINOIS
SECTION 92-00068-01 - FP
FAS ROUTE 735 (SHIPMAN ROAD)
SURVEY REFERENCE POINTS

| | |
|-----------|---------------|
| DWG. NO. | |
| TIES | _DWG ACAD |
| COGO FILE | -- |
| REF. BK. | FAS RTE. 735 |
| JOB NO. | 455048 |
| DSN. BY. | D.E.G. |
| DNW. BY. | GAB |
| CHK. BY. | D.E.G. |
| DATE | OCTOBER, 2004 |
| SCALE | NOT TO SCALE |
| SHEET | 8 OF 58 |

S:\Drawing\Macoupin\fas-735.sh\INTES.DWG, 10/04/2004 02:01:44 PM, jman, 112,8831