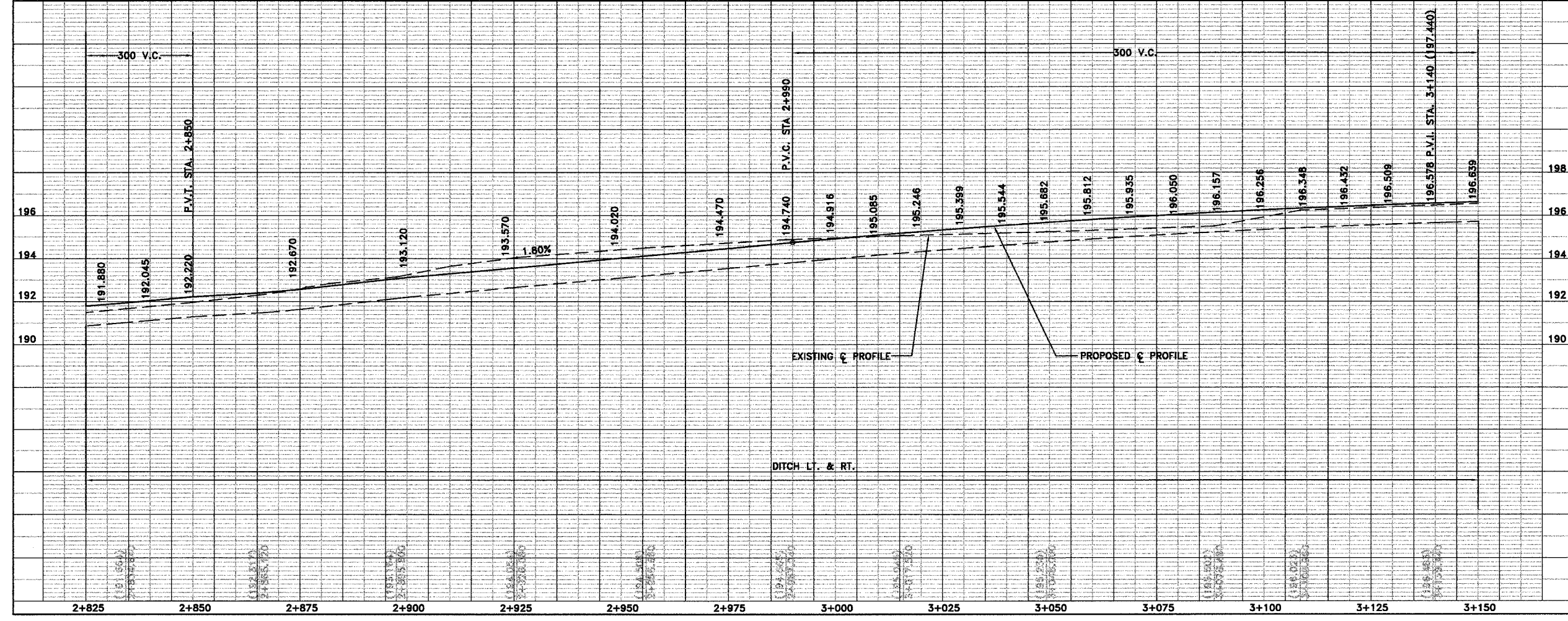
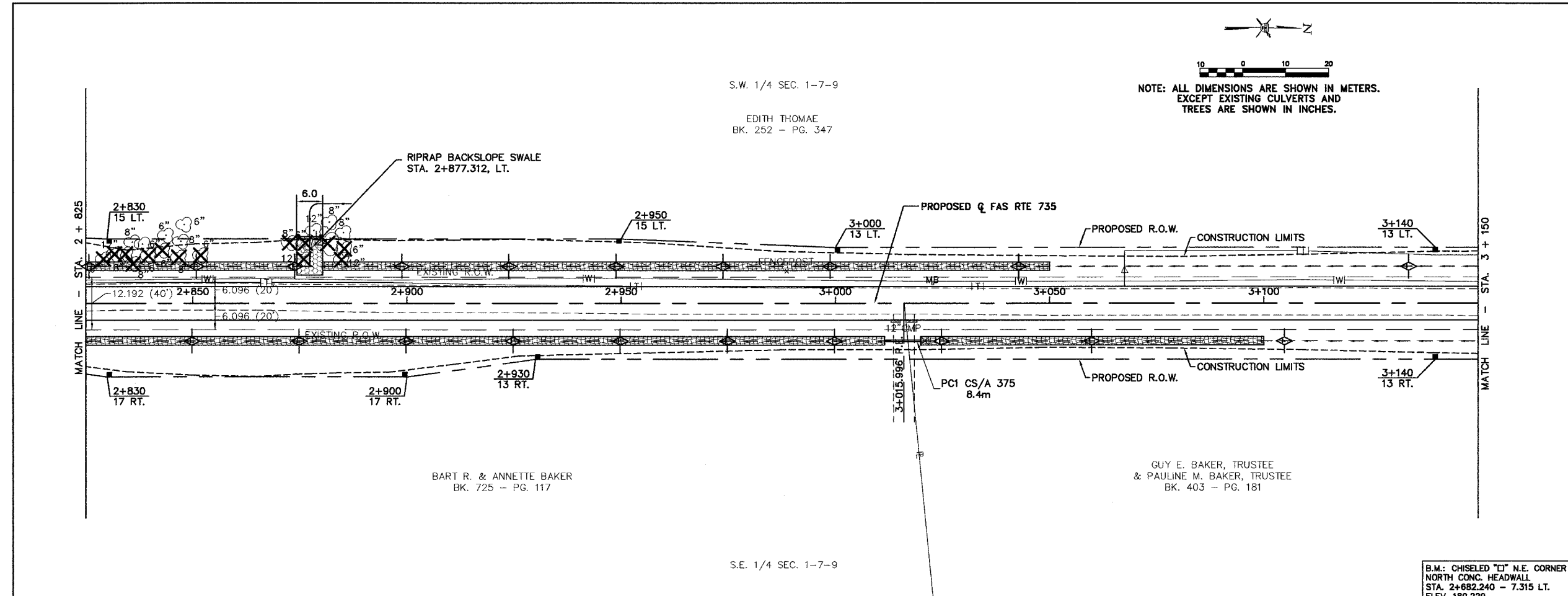


NOTE: ALL DIMENSIONS ARE SHOWN IN METERS.
EXCEPT EXISTING CULVERTS AND
TREES ARE SHOWN IN INCHES.



REVISIONS

Sheppard Morgan & Schwaab, Inc.
CONSULTING ENGINEERS & LAND SURVEYORS
10 Central Industrial Dr
Northgate Center
Granite City, IL 62040
618/977-9700



MACOUPIN COUNTY, ILLINOIS
SECTION 92-00068-01-FP
FAS ROUTE 735 (SHIPMAN ROAD)
PLAN & PROFILE

DWG. NO.
735-0110_DWG ACAD
CADD FILE
REF. BK. FAS RTE. 735
JOB NO. 455048
DSN. BY: D.E.G.
DWN. BY: CAD
CHK. BY: D.E.G.
DATE: OCTOBER, 2004
SCALE: 1 : 500
SHEET 10 OF 58

S:\Drawing\macoupin\92-0110.dwg, 10/04/2004 02:03:32 PM, jman, 1:27