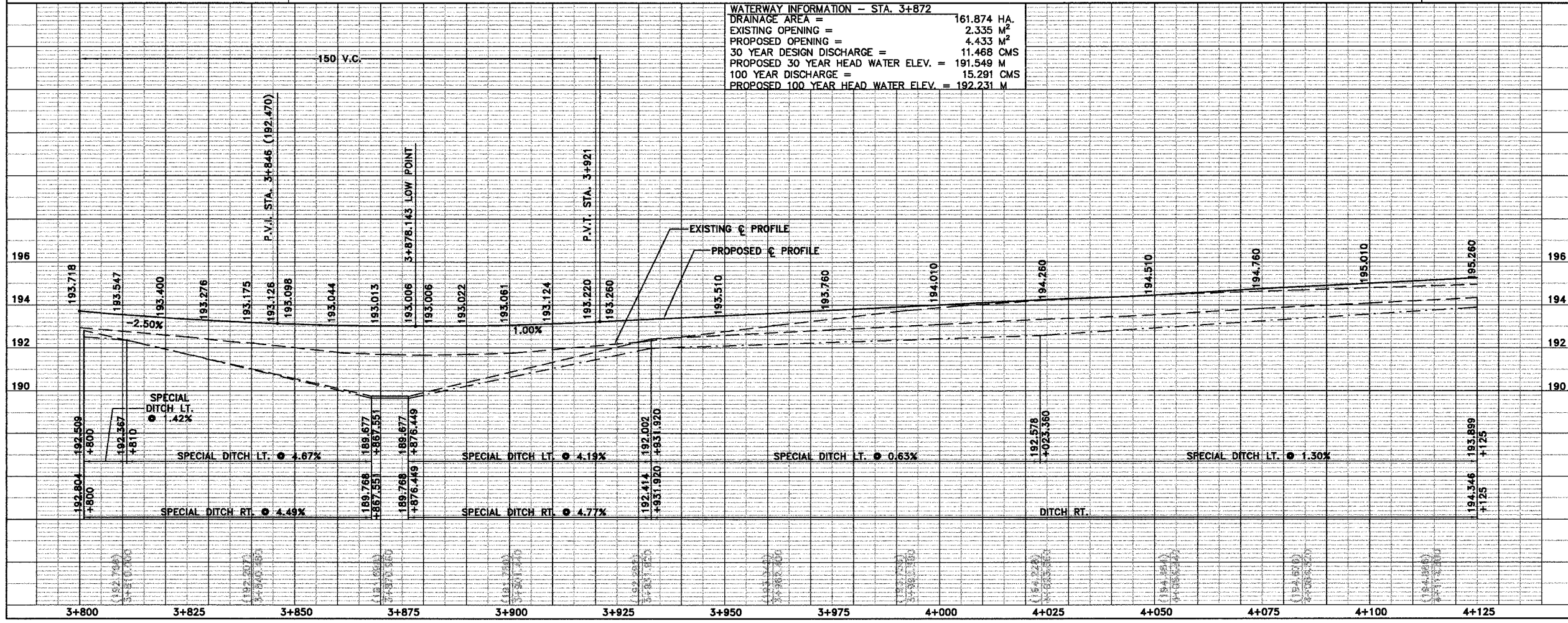


REVISIONS

SMS ENGINEERS
Sheppard Morgan & Schwaab, Inc.
CONSULTING ENGINEERS & LAND SURVEYORS
215 Market Street
Alton, Illinois 62002
618/468-8765

10 Central Industrial Dr
Northgate Center
Greenville, IL 62040
618/877-8700



MACOUPIN COUNTY, ILLINOIS
SECTION 92-00068-01-FP
FAS ROUTE 735 (SHIPMAN ROAD)
PLAN & PROFILE

DWG. NO.
735-PP13_DWG ACAD

COGO FILE

REF. BK. FAS RTE. 735

JOB NO. 455048

DSN. BY: D.E.G.

DWN. BY: CAD

CHK. BY: D.E.G.

DATE: OCTOBER, 2004

SCALE: 1 : 500

SHEET 13 OF 58

S:\Drawing\Map\pp13-735.dwg (10/04/04) 10:18:37 AM jman 1:127