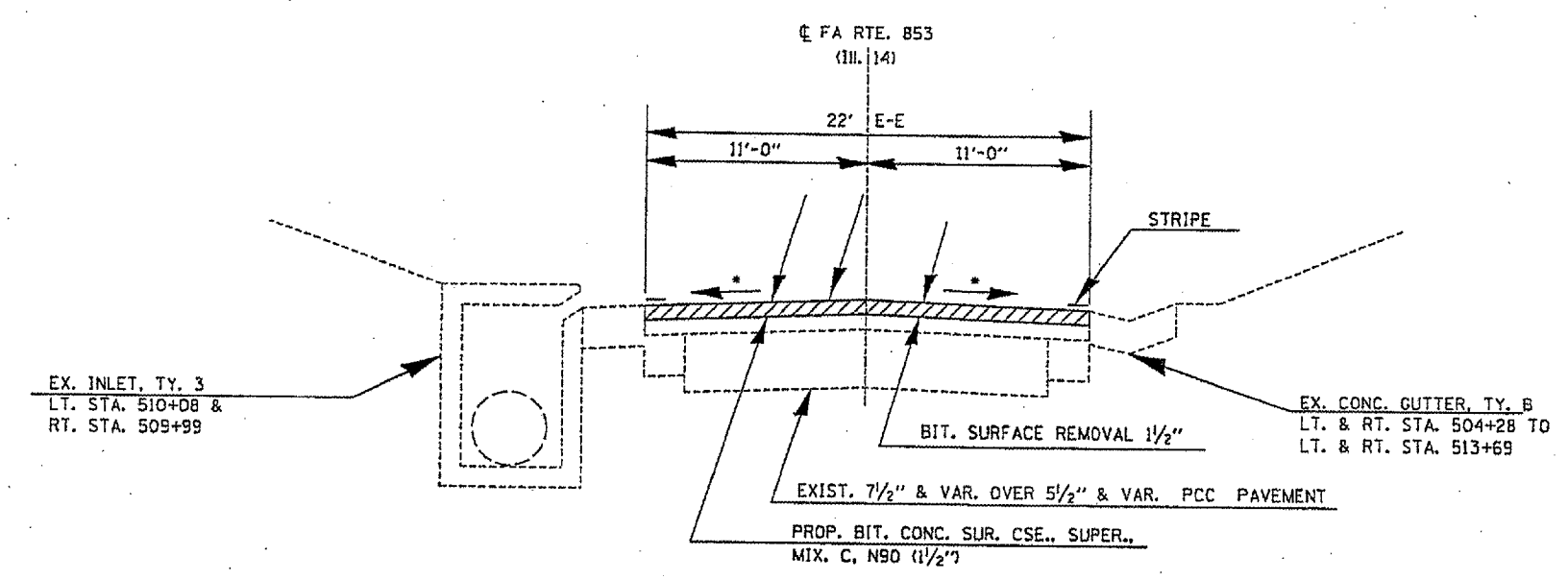


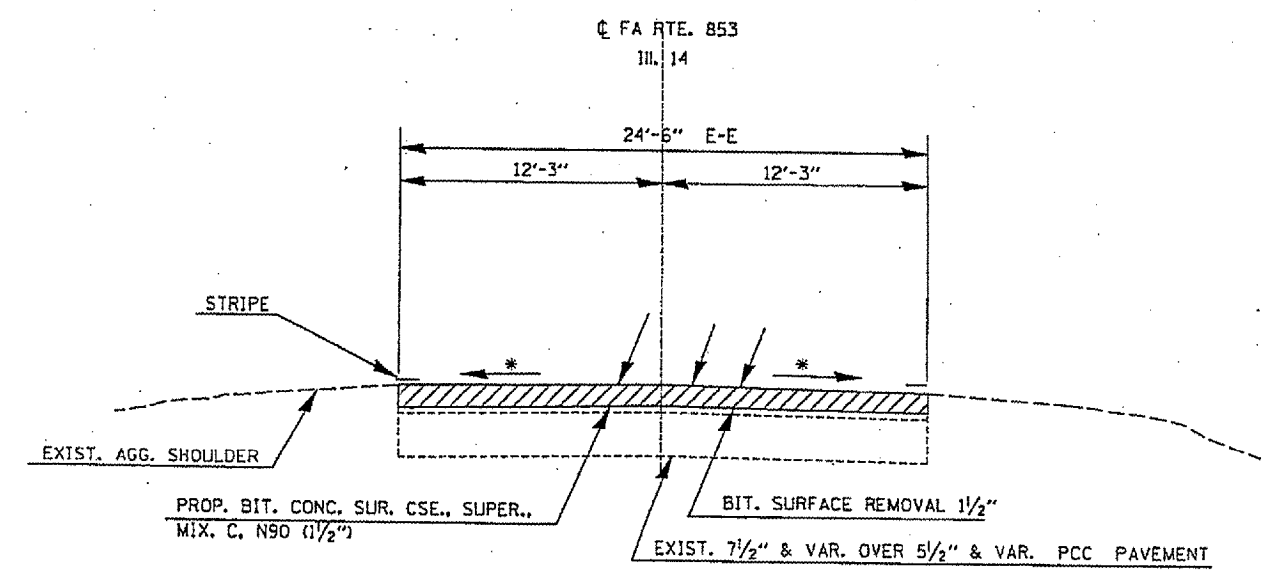
F.A.P. RTE.	SECTION	COUNTY	TOTAL SHEETS	SHEET NO.
853	*	FRANKLIN	27	9
STA.		TO STA.		
FED. ROAD DIST. NO.		ILLINOIS FED. AID PROJECT		
*09 SHART FY 2004-1		C.N. 98772		

**TYPICAL SECTION NO. 9
RURAL SECTION**



TO BE USED:
STA. 504+28 TO STA. 513+69
(INLAY AT I.C.G. R.R. UNDERPASS AREA)

**TYPICAL SECTION NO. 10
RURAL SECTION**



TO BE USED:
STA. 432+83 TO STA. 433+79
(INLAY OVER STR. NO. 028-2015
DBL. 12'X7' BOX CULV.)

*MATCH EX. SLOPE.

TYPICAL SECTIONS - FAP 853 (ILL. 14) STA. 504+28 TO STA. 513+69 (ICGRR UNDERPASS)
AND STA. 432+83 TO STA. 433+79 (INLAY OVER BOX CULV.)